

Specification Notes

Design Flexibility:
Due to the sensitivity of site and the importance of place contractors must seek approval prior to works commencing from both the Indigenous Representative and the Designer. If adjustments are required to the layout on site, this must be allowed for.

Existing Conditions: work with existing features such as ground levels and trees to ensure minimal disturbance. All setout to be approved on site by Designer prior to works. **DO NOT DISTURB GROUND WITHIN TREE PROTECTION ZONES.**

Earthworks: excavate for gravel surfaces & rock edging as per plan following natural contours. Finished grades to be compatible with wheelchair/wheeled walker access and drainage requirements.

Granite Edge: supply & install granite rock in mortar bed as per plan to contain gravel areas. Edges to be 300mm min. wide with top surface flush with gravel & batter to existing ground level on outside edge to prevent collection of flood debris.

Length required:
Main Path = 202 lineal meters (each side 101 m)
Lake Viewing Crescent Area = 4 m²
Resting Area 1 = 25 lineal meters
Resting Area 2 = 15 lineal meters
Gravel Surface: supply & install 100mm compacted depth Class 3 crushed rock base with 30mm min dust topping. Ensure finished surface is flush with rock edging & crossfall prevents water from puddling.

Recommended Supplier: Mawsons - 5766 2251

Paths and Resting Areas = 308 m²

Gravel Surface - Stage 1: supply & install dust to top-up all existing gravel areas in Stage 1 as required.

Stage 1 Area = 510 m²

Steel Edge: supply & install 4mm thick 75mm high steel edge with welded pegs at regular intervals as per plan.

Stage 1 garden beds = 193 lineal meters

Stage 2 garden beds = 72 lineal meters

Mulch: supply & install approved organic weed-free mulch at 100mm thick.

Stage 2 Planting Areas = 157 m²

Stage 1 Planting Areas - top up as required

Granite Boulders: supply & install granite boulders throughout landscape as per plan with flat surface at top to create resting point.

Quantity = 18

Frontage Quantity = 3 of differing sizes





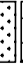
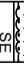
Planting: refer Plant Schedule.

Bollards: remove existing treated pine bollards. Supply & install new Redgum bollards at 1.8m centres as per plan to form wave (min height 500mm & max height 1200mm).

Recommended Local Supplier: to be discussed

Length required = 78 lineal meters

Legend

-  Existing Tree with Tree Protection Zone (TPZ) (to remain)
-  Gravel Dust Surface & Granite Edge (refer Specification Notes)
-  Proposed Mulched Garden Bed with Steel Edge (refer Specification Notes & Plant Schedule)
-  Stage 1 Existing Garden Beds (refer Plant Schedule)
-  Granite Boulder (refer Specification Notes)
-  Existing Granite Boulder (to remain)

ISSUE	DATE	DESCRIPTION

Jenny Kjar
 BA, BPP, Qual. 19h. Inv.
 Landscape Designer
 234 Seasons Road
 Kellawarra VIC 3678
 MOBILE 0488 578 123
 EMAIL jennykjar@gmail.com

FOR
Tomorrow Today
 AT
Lake Benalla

FOR COUNCIL ENDORSEMENT


 Scale - 1:250 @ A1 / 1:500 @ A3

DRAWING TITLE
**ABORIGINAL GARDEN
 LANDSCAPE SETOUT PLAN**

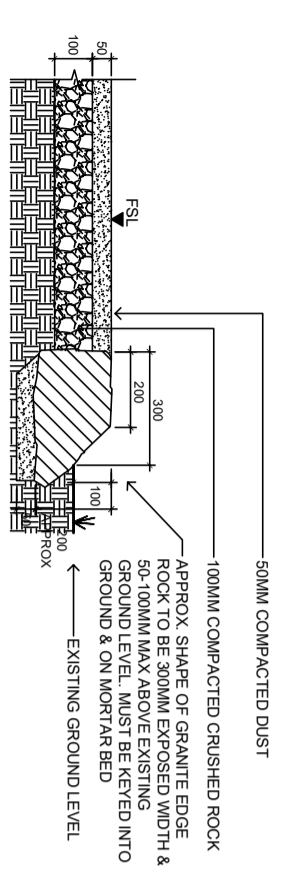
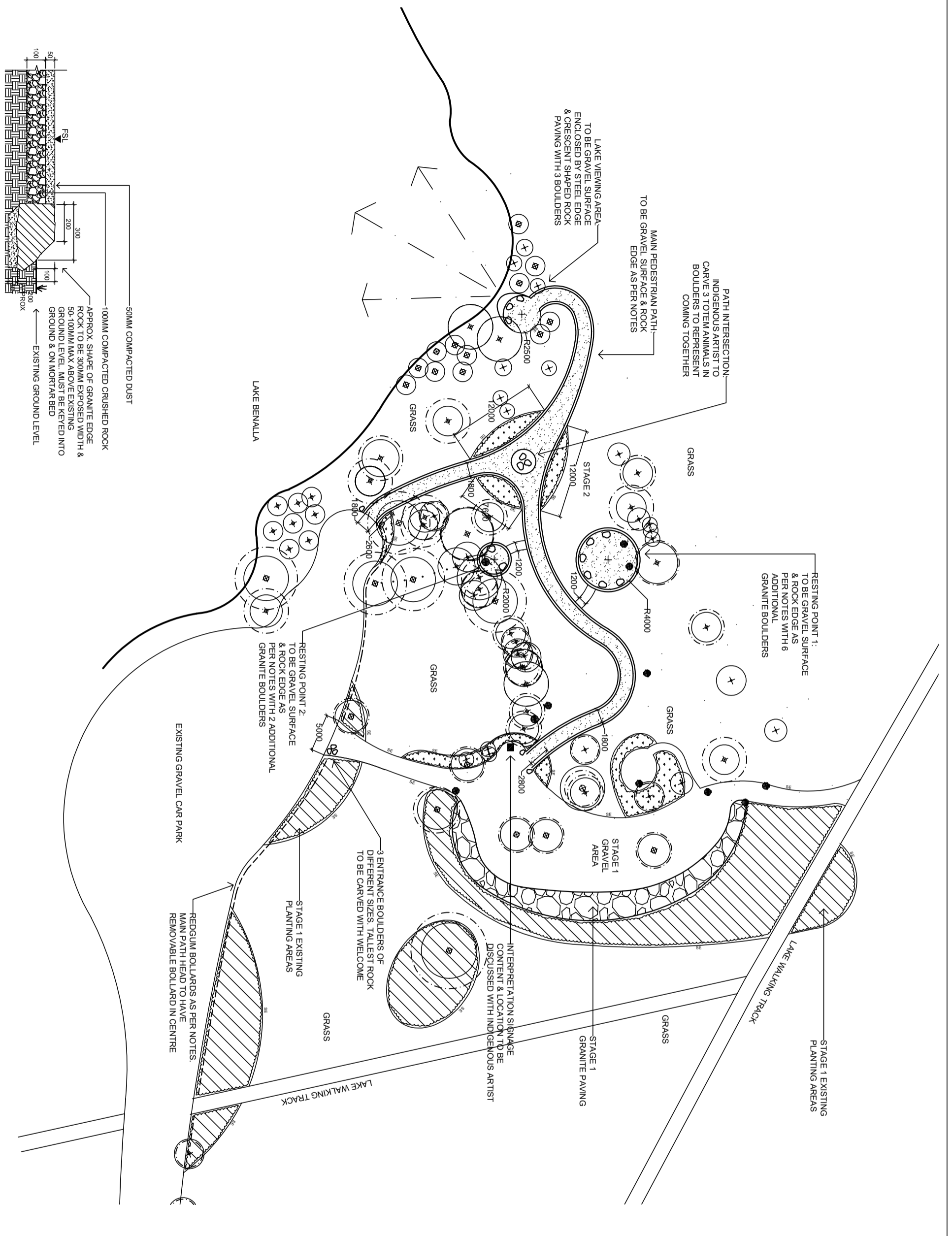
DATE
FEBRUARY 2021

DRAWING NO.
LSP - 0221

DRAWN BY
JK

REVISION

SHEET 1 OF 1



1:20