

# Council NEWS

March 2021



## MAYOR'S MESSAGE



Here we are in autumn the best season to enjoy all that Benalla has to offer, and we have many new attractions for people to try.

The splash park is up and running and is

very popular as is the bouldering, play ground equipment and shade sails are also being installed, the Aquatic Centre has been repainted and the

indoor pools retiled, the outdoor pool has been repaired and painted. New lighting has been installed along the boardwalk and the mural lights are now all working. Three new half size basketball courts have been built beside the skatepark. All this is part of the foreshore revitalisation project with more to come. The older generation has not been forgotten with a refurbishment of the senior citizens building.

With the lake drawn down many people are asking what the spiky structures are, they are fish habitats

installed by the Tatong Anglers to encourage fish to stay in the lake.

You will have noticed Benalla is growing and becoming busier, there are a lot of new and exciting people moving here and they bring with them a tidal wave of energy, passion and knowledge so please welcome any new faces you may see.

Stay safe and enjoy autumn.

**Cr Danny Claridge**  
**Mayor**

## 2021 ANNUAL GRANTS PROGRAM IS NOW OPEN

The Council's Annual Grants Program will distribute up to \$90,000 to community-based not-for-profit groups and other organisations to assist in the development of facilities, projects and events.

The annual program includes Community Grants up to \$2,500, Major Event Funding up to \$1,500, Youth Participation Grants up to \$1,000 and Community Sponsorship, allocated monthly in amounts of up to \$500.

Applications to the Council's Community Grants Program close Friday 26 March 2021. For further information go to [benalla.vic.gov.au](http://benalla.vic.gov.au)



The Moornag Cemetery entrance was redeveloped with a community grant in 2020.

## PET REGISTRATIONS DUE 10 APRIL 2020

Visit or call the Council's Customer Service Centre to pay your animal registration to ensure your pet is registered for the year. Dogs and cats over the age of three months living within Benalla Rural City must be registered.

Registering your pet is the best way to ensure it's returned to you if it goes missing. Your registration fee covers more than just our lost and found service. Our animal management program covers everything from aggressive and wandering animals, through to education programs for children. You can read more about how your pet registration fees are used on our website at [benalla.vic.gov.au](http://benalla.vic.gov.au)



## CHANGES TO DISABILITY PARKING PERMITS

The way disability parking permits are administered is changing.

From 22 March 2021, disability parking permits will be issued through an online system by VicRoads.

The Council will still enforce permits and ensure people are compliant in their parking.

All existing Benalla Rural City permits will remain valid until they expire.

For more information visit [vicroads.vic.gov.au/app](http://vicroads.vic.gov.au/app)





## MOVE TO BATTERY OPERATED TOOLS

We recently upgraded our maintenance equipment including chainsaws, blowers, brushcutters and lawnmowers.

The tools are all battery powered instead of running on non-renewable fuel sources.

The new tools have greater longevity, are quieter and better for the environment in the long run.



Paul is operating a new battery-operated hedge trimmer.

## GROWING BENALLA'S BOTANICAL GARDENS

We received a grant of \$22,400 to make improvements to the Benalla Botanical Gardens as part of the Victorian Government's 'Growing Victoria's Botanic Gardens' program.

The funding has been used to further develop the Benalla Botanical Gardens' conservation strategy, consider sustainability and lighting improvements and install signage.

Drainage and resurfacing works have been completed on the walking tracks, LED lights have replaced the old lamp posts and we have installed 50 metres of steel garden bed edging.



Installation of new lamp post



New LED lights replace globes

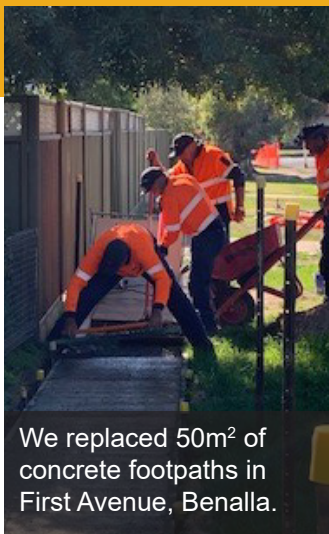


While the lake is drawn down, we are removing debris from the weir and fish ladder outlets.

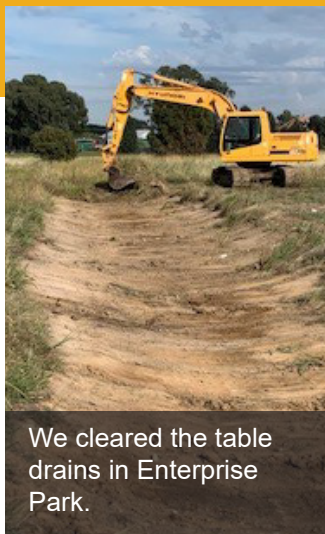
## WORKS AROUND BENALLA RURAL CITY



We repaired the culvert on Old Thoona Road near Benalla-Yarrawonga Road, Goorambat.



We replaced 50m<sup>2</sup> of concrete footpaths in First Avenue, Benalla.



We cleared the table drains in Enterprise Park.

We replaced faded and damaged street signs throughout our CBD to ensure safe signage for our main commercial precinct.

## ROAD MAINTENANCE & GRADER

We have been grading around Mokoan and Boweya on Basin Road, Brack Road, Jones Road and Griffiths Track.

We've also been around the Winton area on Greta Road and Kennedy Lane, as well as working to improve the safety of Link Road's shoulders.

We've been using our road maintenance unit on Benalla's rural roads, including Basin Road and Emu Bridge Road. We've also been working in Lima East on Swanpool Lima Road.



 [Facebook.com/BenallaRuralCity](https://www.facebook.com/BenallaRuralCity)

 [Twitter.com/BenallaRuralCty](https://twitter.com/BenallaRuralCty)

[www.benalla.vic.gov.au](http://www.benalla.vic.gov.au)

Tel 03 5760 2600 | Fax 03 5760 5537 | Email [council@benalla.vic.gov.au](mailto:council@benalla.vic.gov.au)

Mail PO Box 227, Benalla VIC 3671 | Customer Service Centre 1 Bridge Street East, Benalla VIC 3672