

BENALLA RURAL CITY

Benalla Aerodrome Manual

CASA Part 139

July 2020

Document Title	Benalla Aerodrome Manual
Version No.	1.0 – July 2020
Review Date	July 2023

Under Review by CASA

Table of Contents

Glossary	9
Preface	18
Amendment record	18
Distribution list.....	18
1 Aerodrome Administration	20
1.1 Operator’s statement.....	20
1.2 Organisational structure	21
1.3 Key personnel	21
1.3.1 Accountable Manager	21
1.3.2 Management positions (aerodrome operation and maintenance).....	22
1.3.3 Aerodrome operations and safety functions	22
1.4 Aerodrome manual administration	23
1.4.1 Manual control	23
1.4.2 Manual amendment	23
1.4.3 Manual review.....	23
1.5 Authorisations.....	24
1.5.1 Aerodrome certificate - conditions.....	24
1.5.2 Aerodrome instruments.....	24
2 Aerodrome information	25
2.1 Aeronautical information.....	25
2.1.1 Aerodrome diagram	25
2.1.2 Aerodrome administration statement.....	25
2.1.3 Aerodrome location statement	26
2.1.4 Movement area information – runways	27
2.1.5 Strip availability	30
2.1.6 Movement area information - taxiways.....	30
2.1.7 Movement area information - aprons.....	31
2.1.8 Visual aids – approach and runway lighting systems	31
2.1.9 Visual aids – other lighting and secondary power supply	33
2.1.10 Navigation aids	34
2.1.11 Aviation rescue and fire-fighting services (ARFFS)	34
2.1.12 Ground services.....	34
2.1.13 Aerodrome operation procedures – standard taxi routes.....	35
2.1.14 Aerodrome operational procedures – special procedures	35
2.1.15 Aerodrome operational procedures – notices.....	35
2.1.16 Aerodrome operational procedures – low-visibility procedures.....	36
2.2 Aerodrome site plan	36
2.3 Site plan – facilities outside aerodrome boundary.....	36
2.4 Aerodrome reference rode (ARC) nominations.....	36

2.4.1	Runways.....	36
2.4.2	Taxiways and taxilanes.....	36
2.4.3	Aircraft parking positions.....	37
2.4.4	Holding bays (aircraft).....	37
2.5	Instrument classification of each runway.....	37
2.6	Deviations from preferred standard.....	37
2.6.1	Location of runway threshold.....	37
2.6.2	Runway turn pad / bypass pad.....	38
2.6.3	Runway longitudinal slope values.....	38
2.6.4	Runway transverse slope values.....	38
2.6.5	Runway surfaces.....	38
2.6.6	Longitudinal slope design values on graded runway strip.....	38
2.6.7	Runway end safety area (RESA).....	39
2.6.8	Taxiway longitudinal slope values.....	39
2.6.9	Taxiway transverse slope values.....	39
2.6.10	Colour of aerodrome markings, markers, signals and signs.....	39
2.6.11	Runway edge lights on a reduced runway width.....	39
2.6.12	Spacing of taxiway edge lights.....	40
2.7	Facilities with retained compliance.....	40
2.7.1	Non-compliant grandfathered facilities.....	40
2.7.2	Grandfathered facilities – opted-in.....	40
3	Aerodrome Operating Procedures and Systems.....	41
3.1	Reporting aeronautical data and information.....	41
3.1.1	Personnel with responsibilities – data originator.....	41
3.1.2	Changes to published aeronautical information.....	42
3.1.3	Advising NOTAM Office (NOF) of changes – aerodrome conditions / hazards.....	43
3.1.4	Reporting hazards that may adversely affect aviation safety to ATC.....	43
3.1.5	Record keeping - reports.....	43
3.1.6	Review of published information.....	44
3.2	Aerodrome serviceability inspections.....	44
3.2.1	Positions with responsibilities.....	45
3.2.2	Routine serviceability inspections.....	45
3.2.3	Additional serviceability inspections.....	46
3.2.4	Inspection procedures.....	46
3.2.5	Communicating with ATC during inspection (if applicable).....	49
3.2.6	Reporting inspection results.....	49
3.2.7	Prompt follow-up action to correct unsafe conditions.....	50
3.2.8	Technical inspection of identified unsafe condition.....	51
3.2.9	Maintaining inspection records.....	51
3.3	Aerodrome lighting.....	51

3.3.1	Personnel with responsibilities	52
3.3.2	Aerodrome lighting – inspection and maintenance	52
3.3.3	Obstacle lighting maintained by aerodrome operator – inspection and maintenance	53
3.3.4	Portable runway lights – inspection and maintenance	53
3.3.5	Monitoring secondary power supply	53
3.3.6	Monitoring standby power supply	53
3.3.7	Lighting inspections and checks.....	54
3.3.8	Maintaining lighting inspection records and follow-up actions.....	54
3.3.9	Switching lights on and off and intensity selection.....	55
3.3.10	Back-up arrangements for PAL system.....	55
3.3.11	Routine and emergency lighting maintenance.....	55
3.3.12	Partial or total power system failure	55
3.3.13	Monitoring hazardous lights, lasers, reflection or glare.....	56
3.3.14	Commissioned lighting systems	56
3.3.15	Commissioning a new or upgrading / replacing an existing lighting system.....	56
3.4	Unauthorised entry to aerodrome	57
3.4.1	Controlling airside access	57
3.4.2	Monitoring airside access points and barriers	58
3.5	Airside vehicle control.....	59
3.5.1	Permit system for airside vehicles	59
3.5.2	Vehicles and ground equipment operated airside.....	59
3.5.3	Airside vehicle lighting requirements.....	60
3.5.4	Vehicles on manoeuvring area.....	60
3.5.5	Airside drivers – training.....	60
3.5.6	Vehicles in proximity to aircraft.....	61
3.5.7	Movement area speed limits	61
3.5.8	Escort service procedures.....	62
3.5.9	Monitoring and enforcing traffic rules	62
3.6	Aircraft parking control.....	64
3.6.1	Aircraft parking control personnel.....	64
3.6.2	Liaison with ATC – apron management	65
3.6.3	Allocating aircraft parking positions.....	65
3.6.4	Engine start and aircraft push-back clearances.....	65
3.6.5	Aerodrome visual docking guidance systems.....	65
3.6.6	Marshalling service	65
3.6.7	Leader (van) service or follow-me service	65
3.6.8	Apron safety management procedures	66
3.6.9	Alternative separation distances and apron markings	66
3.7	Aerodrome obstacle control.....	67
3.7.1	Obstacle control personnel	67

3.7.2	Monitoring take-off, approach and transitional surfaces	67
3.7.3	Proposed or actual infringements – OLS.....	68
3.7.4	Height on infringements – OLS	69
3.7.5	Monitoring visual segment surfaces and critical obstacles	69
3.7.6	Proposed or actual infringements – PANS-OPS	69
3.7.7	Height of infringements – PANS-OPS.....	70
3.7.8	Obstacle control within aerodrome boundary	70
3.7.9	Obstacle control outside aerodrome boundary.....	70
3.7.10	Obstacle lights serviceability monitoring programme.....	70
3.7.11	Obstacle light outage	71
3.7.12	Charts published by the aerodrome operator	71
3.8	Protection of communication, navigation, surveillance and meteorological facilities	72
3.8.1	Controlling activities near CNS and MET facilities.....	72
3.8.2	Supply and installation of warning signs.....	72
3.9	Aerodrome technical inspections / manual validations.....	72
3.9.1	Inspection personnel.....	72
3.9.2	Inspection items and timeframes.....	72
3.9.3	Qualified personnel for technical inspections / manual validations	74
3.9.4	Scheduling inspections / manual validations and recording their results	74
3.9.5	Briefing technical inspectors	75
3.9.6	Post-inspection / validation corrective actions.....	75
3.9.7	Providing CASA with inspection / validation reports	75
3.9.8	Maintaining records of technical inspections / manual validations	76
3.10	Aerodrome works safety.....	76
3.10.1	Works safety personnel.....	76
3.10.2	Preparation of a method of working plan (MOWP)	77
3.10.3	MOWP Notifications.....	78
3.10.4	Communications with ATC during aerodrome works.....	79
3.10.5	Time-limited works (TLW) or emergency works	79
3.10.6	Notifications of TLW or emergency works	79
3.10.7	Works at closed aerodrome	80
3.11	Wildlife hazard management	80
3.11.1	Wildlife hazard personnel.....	80
3.11.2	Training of personnel	81
3.11.3	Wildlife hazard management plan	81
3.11.4	Wildlife hazard monitoring.....	82
3.11.5	Wildlife hazard assessment	82
3.11.6	Wildlife hazard mitigation	83
3.11.7	Wildlife hazard reporting (AIP, NOTAM, ATC, UNICOM)	83
3.11.8	Liaison with local authorities for wildlife hazard mitigation.....	84

3.12	Low-visibility operations (LVO)	85
3.12.1	Low-visibility personnel	85
3.12.2	Vehicular traffic in low-visibility operations	85
3.12.3	CNS facilities in low-visibility operations.....	85
3.12.4	Manoeuvring area inspections in low-visibility operations.....	85
3.12.5	Measuring runway visibility	85
3.12.6	Communicating visibility measurements to ATC or pilots	85
3.12.7	Transmissometers	86
3.12.8	Low-visibility procedures (LVP)	86
3.13	Disabled aircraft removal.....	88
3.13.1	Aircraft removal personnel	88
3.13.2	Aircraft removal – aerodrome operator and aircraft certificate holder	88
3.13.3	Notifying aircraft certificate holder	89
3.13.4	Liaising with the ATSB, Defence and ATC	89
3.13.5	Equipment and person(s) to remove aircraft	90
3.14	Aerodrome safety management	90
3.14.1	Safety management system (SMS).....	90
3.14.2	Risk management plan	90
4.1	Emergency response personnel	91
4.2	Aerodrome emergency response.....	91
4.2.1	Aerodrome emergency plan (AEP)	91
4.2.2	Local / state emergency response plan.....	91
4.3	Aerodrome emergency procedures	92
4.3.1	Aerodrome emergency committee	92
4.3.2	Emergency services organisations.....	92
4.3.3	Local emergency planning arrangements	92
4.3.4	Notification and initiation of emergency response	94
4.3.5	Activation, control and coordinator of emergency responders	94
4.3.6	Aerodrome emergency facilities	94
4.3.7	Access and management of assembly areas	95
4.3.8	Response to a local stand-by event	95
4.3.9	Initial response to full emergency.....	95
4.4	Readiness of emergency facilities, access points and assembly areas.....	95
4.5	Emergency responder preparedness.....	96
4.5.1	Site inductions for emergency responders	96
4.5.2	Emergency response training.....	96
4.5.3	Emergency exercises.....	96
4.6	Post-emergency return to normal operations	96
4.7	Reviews of aerodrome emergency plan (AEP)	97
4.8	Monitoring local emergency planning arrangements.....	97

5	Aerodrome Lease of Land for Hay Production	98
5.1	Benalla Airport Cropping Lease	98
5.1.1	Introduction	98
5.1.2	Site inductions for hay production staff.....	98
5.1.3	Hay production obstacle limitations	98
5.1.4	Maintaining records.....	98
	Appendix 1	99
1.1	Benalla Aerodrome.....	99
1.2	Benalla Aerodrome Obstacle Limitation Surfaces.....	100
1.2.1	Obstacle limitation surfaces chart overall	100
1.2.2	Obstacle limitation surfaces chart east.....	101
1.2.3	Obstacle limitation surfaces chart west	102
1.2.4	Obstacle limitation surfaces chart inner horizontal surfaces	103
1.3	Benalla Aerodrome Plan Cropping Lease Areas.....	104
	Appendix 2	105
2.1	Aerodrome Serviceability Inspection Checklist (DOC19/29344)	105
2.2	Benalla Airport Lighting and Equipment Inventory Checklist (DOC20/53866)	106
2.3	Benalla Airport Lighting and Electrical Reticulation Inspection (DOC20/80927)	107
2.4	Benalla Airport Monitoring and Enforcement Traffic (DOC20/65186).....	109
2.5	Benalla Airport Manual Inspections Calendar Reminders (DOC20/66749)	111
2.6	Benalla Airport Technical Inspection Report (DOC20/80929)	112
2.7	Annual Benalla Airport Manual validation and report (DOC20/82638)	114
2.8	Benalla Airport Method of Work Plan Template (DOC20/66735)	115
2.9	Benalla Airport Wildlife Strike Report (DOC20/53870)	119
2.10	Benalla Airport ARO Training and Register reports (DOC20/42791).....	120

Glossary

Acronyms and abbreviations

Acronym / abbreviation	Description
ACN	Aircraft classification number
ADP	Aeronautical data package
AEP	Aerodrome emergency plan
ARC	Aircraft reference code
ARFFS	Aviation rescue and firefighting services
AGL	Aeronautical ground lighting
AHD	Australian height datum
AIP	Aeronautical information publication
AIS	Aeronautical information service
ALARP	As low as reasonably practicable
AMSL	Above mean sea level
ARO	Aerodrome reporting officer
ASDA	Accelerate stop distance available
ATC	Air traffic control
AT-VASIS	An abbreviated T pattern visual approach slope indicator system
AVDGS	Advanced visual docking guidance system
CASA	Civil Aviation Safety Authority
ERSA	En-Route Supplement Australia
Ft	Feet
FOD	Foreign object debris
H24	Continuous
IFR	Instrument flight rules
IWDI	Illuminated wind direction indicator
LDA	Landing distance available

Acronym / abbreviation	Description
LDP	Low visibility procedures
M	Metre(s)
MAGS	Movement area guidance sign
MOS	Manual of Standards
MOWP	Method of working plan
NAIPS	National aeronautical information processing system
NOF	NOTAM office
NOTAM	Notice to airmen
OFZ	Obstacle free zone
OLS	Obstacle limitation surface
OMGWS	Outer main gear wheel span
PAL	Pilot activated lighting system
PANS-OPS	Procedures for Air Navigation Services – Aircraft Operations
PAPI	Precision approach path indicator
PCN	Pavement classification number
RESA	Runway end safety area
RMP	Risk management plan
RTIL	Runway threshold identification lights
RV	Runway visibility
RVR	Runway visual range
RWY	Runway
SMS	Safety management system
STODA	Supplementary take off distance
TDZ	Touchdown zone
TODA	Take-off distance available
TORA	Take-off run available

Acronym / abbreviation	Description
T-VASIS	T pattern visual approach slope indicator system
TWY	Taxiway
VASIS	Visual approach slope indicator system
VDGS	Visual docking guidance system
VFR	Visual flight rules
WDI	Wind direction indicator

Under Review by CASA

Definitions

Term	Definition
Accelerate-stop distance available	The length of the take-off run available plus the length of the stopway if provided.
Accident	<p>An occurrence associated with the operation of an aircraft which takes place between the time any person boards the aircraft with the intention of flight until such time as all such persons have disembarked, in which:</p> <ul style="list-style-type: none"> ▪ A person is fatally or seriously injured as a result of <ul style="list-style-type: none"> – Being in the aircraft, or – Direct contact with any part of the aircraft, including parts which have become detached from the aircraft or – Direct exposure to jet blast, except when the injuries are from natural causes, self-inflicted by other persons, or when the injuries are to stowaways hiding outside the areas normally available to the passengers and crew, or ▪ The aircraft sustains damage or structural failure which <ul style="list-style-type: none"> – Adversely affects the structural strength, performance or flight characteristics of the aircraft, and – Would normally require major repair or replacement of the affected component, except for engine failure or damage when the damage is limited to the engine, its cowlings or accessories, or for damage limited to propellers, wing tips, antennas, tyres, fairings, small dents or puncture holes in the aircraft skin, or ▪ The aircraft is missing or is completely inaccessible.
Aerodrome	An area of land or water (including any buildings, installations and equipment) intended to be used either wholly or in part for the arrival, departure or movement of aircraft.
Aerodrome elevation	The elevation of the highest point of the landing area.
Aerodrome reference code	<p>Refers to the three (3) elements that are nominated by the aerodrome operator, specifically:</p> <ul style="list-style-type: none"> ▪ A code number which is determined by the aeroplane reference field length, and which is applicable to runways ▪ A code letter which is determined by the aeroplane wingspan, and which is applicable to runways, taxiways, aircraft holding bays and parking positions ▪ The OMGWS which is applicable to runways and taxiways.
Aerodrome reference point	The designated geographical location of an aerodrome.

Term	Definition
AIP responsible person	For an aeronautical data originator, a person appointed by the originator under regulation 175.445 as responsible for the provision of aeronautical data or aeronautical information published in the AIP.
Air transport operation	<p>A passenger transport operation, or a cargo transport operation, that:</p> <ul style="list-style-type: none"> ▪ Is conducted for hire or reward, or ▪ Is prescribed by an instrument issued under regulation 201.025. <p>However, an operation conducted for a purpose mentioned in paragraph 206(1)(a) of CAR is not an air transport operation.</p> <p>206(1)(a) aerial work purposes, being purposes of the following kinds (except when carried out by means of an RPA):</p> <ul style="list-style-type: none"> ▪ Aerial surveying ▪ Aerial spotting ▪ Agricultural operations ▪ Aerial photography ▪ Advertising ▪ Balloon flying training ▪ Ambulance functions ▪ Carriage, for the purposes of trade, of goods being the property of the pilot, the owner of the hirer of the aircraft (not being a carriage of goods in accordance with fixed schedules to and from fixed terminals) ▪ Any other purposes that is substantially similar to any of those specified in subparagraphs (i) to (vii) (inclusive).
AIS provider	A person who holds a certificate under regulation 175.055 of CASR.
Apron	A defined area on a land aerodrome to accommodate aircraft for the purposes of loading or unloading passengers, mail or cargo, fuelling, parking or maintenance.
Apron taxiway	A portion of a taxiway system located on an apron to provide a through taxi route for aircraft across the apron to another part of the taxiway system.
Australian height datum	The datum that sets mean sea level as zero elevation.
Clearway	A defined area at the end of the TORA, on the ground or water under the control of the aerodrome operator, which is selected or prepared as a suitable area over which an aeroplane may make a portion of its initial climb to a specified height.
Displaced threshold	A threshold not located at the extremity of a runway.
Holding bay	A defined area where aircraft can be held or bypassed to facilitate efficient surface movement of aircraft.

Term	Definition
Incident	An occurrence, other than an accident, associated with the operation of an aircraft which affects or could affect the safety of operation.
Internal aerodrome	An aerodrome: <ul style="list-style-type: none"> ▪ Designated by the Department as an international airport in Australia; and ▪ Identified as a designated international airport in Australia on the Department's website.
Instrument runway	One of the following types of runway nominated for the operation of aircraft using instrument approach procedures: <ul style="list-style-type: none"> ▪ Non precision approach runway ▪ Precision approach runway (CAT I) ▪ Precision approach runway (SA CAT I) ▪ Precision approach runway (SA CAT II) ▪ Precision approach runway (CAT II) ▪ Precision approach runway (CAT III A / B / C)
Landing distance available	The length of the runway which is declared available and suitable for the ground run of an aeroplane landing.
Manoeuvring area	Part of the aerodrome used for the take-off, landing and taxiing of aircraft, excluding aprons.
Method of working plan	A plan to ensure that aerodrome works do not present a hazard to aircraft operations.
Movement area	A part of an aerodrome to be used for the take-off, landing and taxiing of aircraft, consisting of the manoeuvring area and the aprons.
Non-homogenous runway surface	A runway surface that has different surface finishes across its full width.
Non-instrument runway	A runway for the operation of aircraft using visual approach procedures.
NOTAM	Notice to Airmen and is a notice issued by the NOTAM Office containing information or instructions concerning the establishment, condition or change in any aeronautical facility, service, procedure of hazard, the timely knowledge of which is essential to persons concerned with flight operations.
NOTAM authorised persons	For an aeronautical data originator, a person(s) appointed under regulation 175.445 by the originator authorised to request the issue, review or cancellation of a NOTAM.

Term	Definition
Obstacle	<p>Fixed (whether temporarily or permanently) and mobile objects, structures and parts of such objects and structures that:</p> <ul style="list-style-type: none"> ▪ Are located on an area provided for the surface movement of aircraft, or ▪ Extend above a defined surface designated to protect aircraft in flight, or ▪ Stand outside the defined surfaces mentioned in items (a) and (b) above and that have been assessed as being a hazard to air navigation.
Obstacle free zone	<p>The airspace above the inner approach surface, inner transitional surface, baulked landing surface, and that portion of the runway strip bounded by these surfaces, which is not infringed by any fixed obstacle other than a low mass and frangibly mounted one required for air navigation purposes.</p>
Obstacle limitation surfaces	<p>A series of planes, associated with each runway at an aerodrome, that defines the desirable limits to which objects or structures may project into the airspace around the aerodrome so that aircraft operations at the aerodrome may be conducted safely.</p>
PANS-OPS	<p>Doc.8168-OPS/611 Volume II (Procedures for Air Navigation Services – Construction of Visual and Instrument Flight Procedures) approved and published by decision of the Council of the International Civil Aviation Organisation, as in force from time to time.</p>
Pavement classification number	<p>A number expressing the bearing strength of a pavement of unrestricted operations by aircraft with aircraft classification number (ACN) less than or equal to the PCN.</p>
Runway	<p>A defined rectangular area on a land aerodrome prepared for the landing and take-off of aircraft.</p>
Runway end safety area	<p>An area symmetrical about the extended runway centreline and adjacent to the end of the runway strip, primarily to reduce the risk of damage to an aeroplane which undershoots or overruns the runway.</p>
Runway strip	<p>A defined area, including the runway and stopway, provided to:</p> <ul style="list-style-type: none"> ▪ Reduce the risk of damage to aircraft running off a runway, and ▪ Protect aircraft flying over the runway during take-off or landing operations.
Scheduled air transport operation	<p>An air transport operation conducted in accordance with a published schedule.</p>

Term	Definition
Secondary power supply	<p>An electrical power supply that:</p> <ul style="list-style-type: none"> ▪ Is automatically connected to the relevant load when the primary power source fails, and <p>Is derived from:</p> <ul style="list-style-type: none"> ▪ The normal public electrical power supply, but in a way that: <ul style="list-style-type: none"> – Supplies power for the aerodrome’s functionality from a special substation that is not the normal substation, and – Supplies the power through a special transmission line that follows a route different from the normal power normal power supply route, and – Makes extremely remote the possibility of a simultaneous failure of the normal public electrical power supply and the power supply for the aerodrome, or – One or more generators, batteries, or similar devices which deliver a constant, reliable and sufficient supply of electrical power for the relevant aerodrome service.
Shoulder	An area adjacent to the edge of a pavement so prepared as to provide a transition between the pavement and the adjacent surface.
Stop way	A defined rectangular area on the ground at the end of the take-off run available and prepared a suitable area in which an aircraft can be stopped in case of an abandoned take-off.
Take-off distance	The length of the take-off run available, plus the length of the clearway provided.
Take-off runway available	The length of the runway declared available and suitable for the ground run of an aeroplane taking off.
Taxi lane	A portion of an apron designated as a taxiway and for use only to provide access to and egress from aircraft parking positions.
Taxiway	A defined path on an aerodrome on land, established for the taxiing of aircraft from one part of an aerodrome to another. A taxiway includes a taxi lane, an apron taxiway and a rapid exit taxiway.
Threshold	The beginning of that portion of the runway usable for landing.
Type A chart	A chart which contains information on all significant obstacles within the take-off area of an aerodrome up to 10 km from the end of the runway.
Type B chart	An obstacle chart which provides obstacle data from around the aerodrome.
Y location code	The international code prefix used to identify Australian aerodromes.

Reference material

Document type	Title
Regulation	Part 123 of the <i>Civil Aviation Safety Regulations 1998</i>

Forms

Form no.	Title

Preface

Amendment record

(Part 139 MOS – 10.03)

Revisions to this manual are dated and a new version number assigned accordingly. In addition to recording the date of change for each section or page of this manual, a summary of the changes made is also recorded.

Version no.	Date of change	Parts and page	Summary of change(s)
1.0	30.06.2021	All	Initial issue

Distribution list

(Part 139 MOS – 10.02(2) (7))

A copy of this manual is retained in the Airport Reporting Office at Benalla Airport. This manual is made available to CASA for inspection if requested.

Electronic or printed copies of this manual are further distributed as follows:

Copy No. (if assigned)	Manual holder	Electronic Format	Hard Copy
1	Greg Robertson, Aerodrome Manager, Benalla Rural City Council	Yes	Yes
2	Cr Peter Davis, Councillor, Benalla Rural City Council	Yes	
3	Brad Sinclair, District Aerodrome Inspector, CASA	Yes	
4	Officer in Charge, Benalla Police Station	Yes	
5	Colin Croxford, Unit Controller, State Emergency Service	Yes	
6	Bruce Burton, Officer in Charge, Ambulance Victoria	Yes	
7	Elena Gigliotti, District Support Officer, CFA North East Region District 23	Yes	
8	Records Officer, Benalla Rural City Council	Yes	
9	ARO, Benalla Airport Reporting Office		Yes

Benalla Airport makes this manual available to all relevant persons on our website. Access is also available to staff through Benalla Rural City records management system.

Persons printing this manual should be aware that any hard copies are uncontrolled and may not be the most up-to-date version.

Under Review by CASA

1 Aerodrome Administration

1.1 Operator's statement

(CASR 139.110(5) (c))

The Benalla Airport Aerodrome Manual has been prepared in accordance with the requirements set out in the Civil Aviation Safety Regulations 1998 (CASRs), and associated Part 139 (Aerodromes) Manual of Standards 2019 (Part 139 MOS).

The contents of this manual describe the systematic approach to the operation and maintenance of Benalla Airport and demonstrates Benalla Rural City Council's commitment to managing the aerodrome safely and promoting a positive safety culture.

The aerodrome will be operated and maintained in accordance with the procedures set out in this manual, and in any subsidiary materials that are referenced in this manual, unless a temporary non-compliance or deviation from the procedures is necessary to ensure the safety of aircraft, aircraft operations, or individuals using the aerodrome. If the temporary non-compliance or deviation in the procedures is to take effect on a permanent basis, the manual will be updated. CASA will be advised of a temporary deviation or a change to this manual within 30 days.

At all times when the aerodrome is operating, the aerodrome manual and any subsidiary materials will be accessible by those personnel who have a role of responsibility.

This manual identifies persons from all levels of the organisation that are responsible and accountable for the safe operation of the aerodrome. As the authorisation holder, Benalla Rural City Council is committed to ensuring that all individuals understand their responsibilities and accountabilities as defined within this aerodrome manual.

Signed:

Name:

Position:

1.2 Organisational structure

(Part 139 MOS – 11.02(a) (i))

An organisational chart which clearly identifies all personnel responsible for the management and administration of **Benalla Airport** is below:



1.3 Key personnel

1.3.1 Accountable Manager

(CASR 139.110(1) (5); Part 139 MOS – 11.02(a) (ii); 13.02; 16.08(3); 25.04(2) (4))

Name	Greg Robertson
Management position	Manager Facilities and Information Technology

Responsibilities:

To ensure Manager Facilities and Information Technology

- complies with civil aviation legislation
- operates and maintains the aerodrome safely and with a reasonable degree of care and diligence
- operates and maintains the aerodrome in accordance with the aerodrome manual for the aerodrome.

The accountable manager has a general knowledge of the relevant civil aviation safety legislation and standards that are applicable to the inspection, reporting, operation and maintenance of the aerodrome.

1.3.2 Management positions (aerodrome operation and maintenance)

(Part 139 MOS – 11.02(a) (ii))

The management position(s) responsible for the **operation** of the aerodrome is / are:

Name	Greg Robertson
Management position	Manager Facilities and Information Technology

The management position(s) responsible for the **maintenance** of the aerodrome is / are:

Name	Greg Robertson
Management position	Manager Facilities and Information Technology

1.3.3 Aerodrome operations and safety functions

(Part 139 MOS – 11.02(c))

The following individuals or positions are responsible for the aerodrome's operations and safety functions:

Individual / position: Manager Facilities and Information Technology

Responsibilities:

- All duties of Airport Reporting and Work Safety Officer
- maintaining the aerodrome manual
- ensuring that adequate resources are available for the safe operation of the aerodrome, directing staff in carrying out maintenance works to ensure the operational safety of the aerodrome
- monitoring aerodrome standards
- complying with exemption conditions and
- complying with CASA directives.

Individual / position: Facilities Coordinator

Responsibilities:

- All duties of Airport Reporting and Work Safety Officer
- monitoring aerodrome standards and coordinating all works at the aerodrome
- coordinating training and supervising all staff carrying out aerodrome related functions.

1.4 Aerodrome manual administration

(Part 139 MOS – 10.01(1) (2) (3); 10.02(1) (3) (4); 10.04(1) (2) (b) (c); 11.02(b))

This aerodrome manual identifies all elements required by the Part 139 MOS. Information that is not relevant to the aerodrome's operational context or regulatory compliance is marked NOT APPLICABLE or N/A.

All required information is contained in this manual and no subsidiary materials have been adopted.

This manual will at all times be accessible by those persons who have a role in the operation and maintenance of the aerodrome.

1.4.1 Manual control

(Part 139 MOS – 10.01(4); 11.02(b))

The following individuals / positions are responsible for reviewing, maintaining, amending and controlling this aerodrome manual:

Individual / position	Role / function
Aerodrome Manager	Controlling the aerodrome manual.
Facilities Coordinator	Reviewing, maintaining and amending the aerodrome manual.

1.4.2 Manual amendment

(Part 139 MOS – 10.03(1) (2) (3))

To maintain the accuracy of this manual, the aerodrome manual controller(s) will be advised of any changes to the aerodrome's facilities, operating procedures, or of any errors or omissions, so that an amendment can be made.

When an amendment is made, the aerodrome manual controller will update the amendment record in the respective section of this manual.

So that readers can identify information in the manual that has changed, the following procedure has been adopted:

- A table of current pages or sections which includes a written summary of each change and the date on which the change was made.

Within 30 days of any amendment to this manual, written notice of the change and a copy of the changed part of the aerodrome manual is provided to CASA.

1.4.3 Manual review

(Part 139 MOS – 12.09(6) (a) (ii))

This manual will be reviewed annually as part of the aerodrome manual validation process.

1.5 Authorisations

1.5.1 Aerodrome certificate - conditions

(Part 139 MOS – 11.01(3) (c))

The aerodrome was formerly a registered aerodrome. The aerodrome manual has been submitted to CASA. An aerodrome certificate has yet to be issued.

1.5.2 Aerodrome instruments

(Part 139 MOS – Chapter 11.01(3) (a))

No approvals, determinations, directions, exemptions or other instruments have been issued by CASA.

2 Aerodrome information

2.1 Aeronautical information

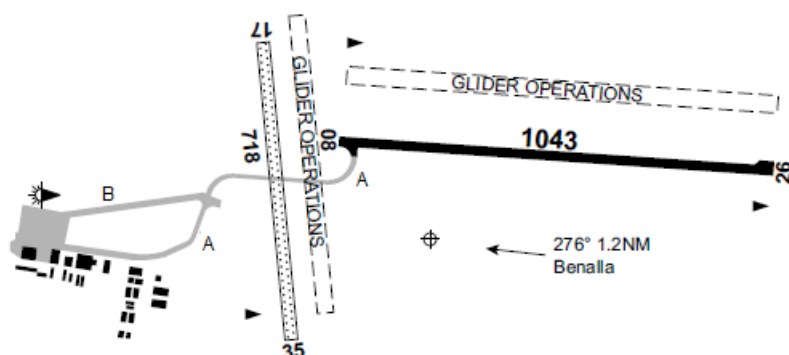
(Part 139 MOS – 11.01(1); Chapter 5)

2.1.1 Aerodrome diagram

(Part 139 MOS – 11.01(1); 5.03(1) (a)-(j))

The following diagrams and plans can be found at the back of this document:

- A single aerodrome diagram that clearly illustrates all applicable aerodrome facilities prescribed in subparagraph 5.03(1) of the Part 139 MOS



- Benalla Aerodrome Obstacle Limitation Surfaces (Appendix 1.2), including:
 - 1.2.1 Obstacle limitation surfaces chart overall
 - 1.2.2 Obstacle limitation surfaces chart east
 - 1.2.3 Obstacle limitation surfaces chart west
 - 1.2.4 Obstacle limitation surfaces chart inner horizontal surfaces
- Benalla Aerodrome Plan Cropping Lease Areas (Appendix 1.3)

2.1.2 Aerodrome administration statement

(Part 139 MOS – 11.01(1); 5.03(2) (a)-(c))

The aerodrome's administration information prescribed in subparagraph 5.03(2) of the Part 139 MOS is recorded below:

Name of aerodrome operator:	Benalla Rural City Council
Postal address:	PO Box 227, Benalla VIC 3671
Phone number:	03 5760 2600

Email address:	council@benalla.vic.gov.au
Website:	www.benalla.vic.gov.au
Facsimile number (if provided):	03 5762 5537
Name of after-hours contact:	Greg Robertson
Phone number:	03 5760 2600
Email address:	council@benalla.vic.gov.au
Facsimile number (if provided):	03 5762 5537
Aerodrome usage:	Restricted Public Use

2.1.3 Aerodrome location statement

(Part 139 MOS – 11.01(1); 5.03(4) (a)-(f))

The aerodrome's location information prescribed in subparagraph 5.03(4) of the Part 139 MOS is recorded below:

Aerodrome name:	Benalla Airport
State / Territory:	Victoria
ARP latitude (WGS84):	36.3315 S
ARP longitude (WGS84):	146.0033 E
Y location code:	YBLA
Elevation:	569 ft
Type A charts (if published):	Type A charts are not provided
Type B charts (if published);	Type B charts are not provided

2.1.4 Movement area information – runways

2.1.4.1 Runway code number

(Part 139 MOS – 11.01(1); 5.04(1) (a))

The code number of the runway(s) is recorded in the table below:

Runway	Code number
08 / 26	1
17 / 35	1

2.1.4.2 Runway bearing, length, width and surface type

(Part 139 MOS – 11.01(1); 5.04(1) (b) (c))

The bearings, length, width, and surface type(s) of the runway(s) is recorded in the table below:

Runway	Runway bearing (Magnetic)	Runway length (m)	Runway width (m)	Runway surface type or types (non-homogenous runways)
08 / 26	083	1043	18	BITUM
17 / 35	164	718	30	OTHER – Grass slit clay

2.1.4.3 Threshold geographical location and elevation – instrument runways

(Part 139 MOS – 11.01(1); 5.04(1) (d) (i) (ii))

The runway(s) 08, 17 and 35 at Benalla Airport are non-instrument runway(s).

The geographical location coordinates, and the elevation of the midpoint of the runway threshold for each instrument runway are recorded in the table below:

Runway threshold	Latitude (WGS84)	Longitude (WGS84)	Midpoint elevation
RWY 26	S 36 33 08.59	E 146 01 06.06	568.1 ft

2.1.4.4 Runway pavement strength rating

(Part 139 MOS – 11.01(1); 5.04(1) (e))

The runway(s) 17/35 at Benalla Airport are natural surface runways without formed pavement.

The strength rating of the runway(s) pavement is recorded in the table below:

CAN – PCN strength rating	Runway 08 / 26
PCN value	10
Pavement type	F
Pavement subgrade	B
MAX Take-off weight	Not rated
MAX tyre pressure value	.44 MPA
Tyre pressure category	OTHER – Pressure limited to .44 MPA (65psi)
PCN evaluation method	U – ACFT – based on aircraft experience

2.1.4.5 Runway strip length and width

(Part 139 MOS – 11.01(1); 5.04(1) (f))

The length and width of the runway strip(s) is recorded in the table below:

Runway	Runway strip length (m)	Runway strip width (m) (graded)	Runway strip width (m) (including flyover)
08 / 26	1163 m	90 m	90 m
17 / 35	838 m	90 m	90 m

2.1.4.6 Runway slope

(Part 139 MOS – 11.01(1); 5.04(1) (g))

The runway slope(s) is / are recorded in the table below:

Runway	Runway slope
08 / 26	0.1% slope to W
17 / 35	0.1% slope to N

2.1.4.7 Runway declared distances

Part 139 MOS – 11.01(1); 5.04(1) (h))

The declared distances for each runway are recorded in the table below:

	Runway 08	Runway 26	Runway 17	Runway 35
Take-off run available (TORA)	1043 m (3421 ft)	1043 m (3421 ft)	718 m (2355 ft)	718 m (2355 ft)
Take-off distance available (TODA)	1103 m (3618 ft)	1103 m (3618 ft)	778 m (2552 ft)	778 m (2552 ft)
TODA gradient	2.71 %	2.07 %	4.32 %	4.79 %
Accelerate-stop distance available (ASDA)	1043 m (3421 ft)	1043 m (3421 ft)	718 m (2355 ft)	718 m (2355 ft)
Landing distance available (LDA)	1043 m (3421 ft)	1043 m (3421 ft)	718 m (2355 ft)	718 m (2355 ft)

2.1.4.8 Intersection departure take-off distances available

(Part 139 MOS – 11.01(1); 5.04(1) (h); 5.12(3) (4))

Intersection departures are not available.

2.1.4.9 Supplementary take-off distances available (STODA)

(Part 139 MOS – 11.01(1); 5.04(1) (h))

The supplementary take-off distances for each runway are recorded in the table below:

Obstacle clear take-off gradient	Runway (m) 08	Runway (m) 26
1.6%		854
1.9 %	820	1017
2.2 %	954	
2.5 %	1052	

2.1.4.10 Established OLS for the runway

(Part 139 MOS – 11.01(1); 5.04(1) (i))

The code number of the runway(s) OLS is recorded in the table below:

Runway end	Established code
08	Code 1
26	Code 1
17	Code 1
35	Code 1

2.1.4.11 Type A charts

(Part 139 MOS – 11.01(1); 5.04(1) (j) (i))

A Type A chart is not required and has not been prepared.

2.1.4.12 Type B charts

(Part 139 MOS – 11.01(1); 5.04(1) (j) (ii))

A type B chart is not required and has not been prepared.

2.1.4.13 Obstacle-free zone (OFZ)

(Part 139 MOS – 11.01(1); 5.04(1) (k))

An obstacle free zone is not identified.

2.1.4.14 Arrestor system

(Part 139 MOS – 11.01(1); 5.04(1) (l))

An arrestor system is not provided.

2.1.5 Strip availability

(Part 139 MOS – 11.01(1); 5.04(2) (a) (b))

The runway strip for 08 / 26 is not suitable for take-offs and landings.

The runway strip for 17 / 35 has been suitably prepared and is available for take-offs and landings.

2.1.6 Movement area information - taxiways

(Part 139 MOS – 11.01(1); 5.04(3) (a)-(d))

Each taxiway designation, code letter, width, and surface type are recorded in the table below:

Taxiway name	Taxiway designation	ARC letter	Taxiway width (m)	Taxiway surface type
Taxiway	A	A	11 m	Bitumen seal
Parallel	B	A	7.5 m	Bitumen seal

2.1.7 Movement area information - aprons

(Part 139 MOS – 11.01(1); 5.04(4) (a)-(c); 5.04(5) (a) (b))

The aerodrome has no international operations, nor have the parking position designations been provided to Air services for publication in the AIP. The apron surface type(s) is / are recorded in the table below:

Apron	Apron surface type
Domestic apron	Bitumen seal

2.1.8 Visual aids – approach and runway lighting systems

(Part 139 MOS – 11.01(1); 5.05)

2.1.8.1 Approach lighting system(s) (ALS)

(Part 139 MOS – 11.01(1); 5.05(1) (a))

The aerodrome does not have a runway approach lighting system.

2.1.8.2 Runway threshold lights and wing bars

(Part 139 MOS – 11.01(1); 5.05(1) (b))

The particulars for each runway threshold lights are recorded in the table below:

Runway designation	Threshold lights - colour	Wing bars - colour	Geographical coordinates
08	Green	Not applicable	Not applicable
26	Green	Not applicable	Not applicable

2.1.8.3 Visual approach slope indicator system (VASIS)

(Part 139 MOS – 11.01(1); 5.05(1) (c))

Visual approach slope indicator system is not provided.

Touchdown zone (TDZ) lighting

(Part 139 MOS – 11.01(1); 5.05(1) (d))

Touchdown zone lighting is not provided.

2.1.8.4 Runway centreline lights

(Part 139 MOS – 11.01(1); 5.05(1) (e))

Runway centreline lights are not provided.

2.1.8.5 Runway edge lights

(Part 139 MOS – 11.01(1); 5.05(1) (f))

The length, longitudinal spacing, colour and intensity of the runway edge lights are recorded in the table below:

Runway designation	Length (m)	Longitudinal spacing (m)	Colour	Intensity (cd)
08 / 26	850 m	90 m	White	100 cd

2.1.8.6 Runway end lights

(Part 139 MOS – 11.01(1); 5.05(1) (g); Chapter 9, Division 10)

The colour(s) of the runway end lights is / are recorded in the table below:

Runway end	Runway end lights – colour
08	Red
26	Red

2.1.8.7 Stopway lights

(Part 139 MOS – 11.01(1); 5.05(1)(h))

The aerodrome does not have stopway lights.

2.1.8.8 Starter extension lighting

(Part 139 MOS – 11.01(1); 5.05(1) (i))

The aerodrome does not have starter extension lighting.

2.1.8.9 Runway threshold identification lights (RTIL)

(Part 139 MOS – 11.01(1); 5.05(1) (j))

The aerodrome does not have RTIL.

2.1.8.10 Pilot activated lighting (PAL) system

(Part 139 MOS – 11.01(1); 5.05(1) (k))

The availability of a PAL system is as follows:

PAL+AFRU operates on the VHF radio frequency 123.4 MHz and requires three one-second pulses to activate.

2.1.9 Visual aids – other lighting and secondary power supply

2.1.9.1 Aerodrome beacon

(Part 139 MOS – 11.01(1); 5.05(2) (a))

The aerodrome does not have an aerodrome beacon.

2.1.9.2 Taxiway lighting systems (including holding positions and stop bars)

(Part 139 MOS – 11.01(1); 5.05(2) (b))

The lighting systems for taxiways, including taxiway holding positions and stop bars (where provided), are recorded in the table below:

Taxiway designation	Taxiway lighting systems			
	Edge lights	Centreline lights	Stop bars	Holding position lights
TWY A	N/A	Blue	N/A	3 inset yellow lights at holding position for entry on to Runway 08 / 26.

2.1.9.3 Apron lighting systems (including VDGS)

(Part 139 MOS – 11.01(1); 5.05(2) (c))

Apron lighting is not provided at the aerodrome.

2.1.9.4 Other movement areas – lighting systems

(Part 139 MOS – 11.01(1); 5.05(2) (d))

All other movement area lighting systems provided at the aerodrome are recorded below:

- Benalla Airport fuel facility has a light at the bowser only.

2.1.9.5 Obstacle lighting for OLS infringements

(Part 139 MOS – 11.01(1); 5.05(2) (e))

There are no lit obstacles that infringe the aerodromes OLS.

2.1.9.6 Secondary power supply (including switch-over time)

(Part 139 MOS – 11.01(1); 5.05(2) (f))

A secondary power supply is not provided.

2.1.10 Navigation aids

(Part 139 MOS – 11.01(1); 5.06)

No navigation aids are provided by the aerodrome operator.

2.1.11 Aviation rescue and fire-fighting services (ARFFS)

(Part 139 MOS – 11.01(1); 5.07)

An ARFFS is not provided by the aerodrome operator.

2.1.12 Ground services

2.1.12.1 Fuel suppliers

(Part 139 MOS – 11.01(1); 5.08(a))

Fuel suppliers and their contact details are recorded in the table below:

Fuel supplier	Fuel type	Contact details	After hours contact details
Aero Refuellers (unmanned)	AVGAS and Jet A1	02 6041 1599	0408 812 304

2.1.12.2 Weather information broadcasts

(Part 139 MOS – 11.01(1); 5.08(b))

Aerodrome weather information broadcasts are not provided by the aerodrome operator.

2.1.12.3 Ground-to-air communication system

(Part 139 MOS – 11.01(1); 5.08(c))

Ground-to-air communication systems are not provided by the aerodrome operator.

2.1.12.4 Other aviation-related services made available to pilots

(Part 139 MOS – 11.01(1); 5.08(d))

No other aviation-related services are made available to pilots by the aerodrome operator.

2.1.13 Aerodrome operation procedures – standard taxi routes

2.1.13.1 Standard taxi routes determined by aerodrome operator

(Part 139 MOS – 11.01(1); 5.09(1) (a))

Standard taxi routes have not been determined by the aerodrome operator.

2.1.13.2 Standard taxi routes determined by the ATS provider

(Part 139 MOS – 11.01(1); 5.09(1) (b))

Standard taxi routes have not been determined by the ATS provider.

2.1.14 Aerodrome operational procedures – special procedures

(Part 139 MOS – 11.01(1); 5.09(2))

There are no special procedures at the aerodrome that pilots would be reasonably expected to know in the interests of aviation safety.

2.1.15 Aerodrome operational procedures – notices

(Part 139 MOS – 11.01(1); 5.09(3))

There are no cautionary or administrative notices relating to the safe use of the aerodrome.

2.1.16 Aerodrome operational procedures – low-visibility procedures

(Part 139 MOS – 11.01(1); 5.09(4) (a) (b) (c))

Low-visibility procedures are not established at the aerodrome.

2.2 Aerodrome site plan

(Part 139 MOS – 11.01(2) (a) (i)-(v))

A scaled plan of the aerodrome site that clearly shows all applicable aerodrome facilities prescribed in subparagraph 11.01(2) (a) of the Part 139 MOS is available in Appendix 1.1 of this manual.

2.3 Site plan – facilities outside aerodrome boundary

(Part 139 MOS – 11.01(2) (b))

Benalla Airport does not own any aerodrome facilities or equipment that is located outside the boundaries of the aerodrome; therefore, this subsection is NOT APPLICABLE.

2.4 Aerodrome reference code (ARC) nominations

(Part 139 MOS – 4.01; 11.01)

2.4.1 Runways

(Part 139 MOS – 11.01(2) (c))

The aerodrome reference code (ARC) number, letter and OMGWS (outer main gear wheel span) for each runway are recorded in the table below:

Runway	ARC number	ARC letter	OMGWS
08 / 26	Code 1	A	Up to but not including 4.5 m
17 / 35	Code 1	A	Up to but not including 4.5 m

2.4.2 Taxiways and taxi lanes

(Part 139 MOS – 11.01(2) (c))

The aerodrome reference code (ARC) letter and OMGWS for each taxiway and taxi lane is recorded in the table below:

Taxiway / taxi lane	ARC letter	OMGWS
TWY A	A	OMGWS 4.5 m up to but not including 6 m
TWY B	A	OMGWS 4.5 m up to but not including 6 m

2.4.3 Aircraft parking positions

(Part 139 MOS – 1.08(2))

Marked aircraft parking positions (primary and secondary) are not provided; therefore, this subsection is NOT APPLICABLE.

2.4.4 Holding bays (aircraft)

(Part 139 MOS – 1.08(2); 6.55(2))

Aircraft holding bays are not provided; therefore, this is NOT APPLICABLE.

2.5 Instrument classification of each runway

(Part 139 MOS – 3.01(2); 11.01(2) (d))

The instrument classification for each runway end is recorded in the table below:

Runway designation	Instrument classification
RWY 08	Non instrument runway
RWY 26	Non precision instrument approach runway
RWY 17	Non instrument runway
RWY 35	Non instrument runway

2.6 Deviations from preferred standard

(Part 139 MOS – 1.08(3) (4); 11.01(3) (d))

2.6.1 Location of runway threshold

(Part 139 MOS – 6.01(3) (4) (6); 8.26)

All runway thresholds are located at the extremity of the runway.

2.6.2 Runway turn pad / bypass pad

(Part 139 MOS – 6.03(2) (3))

All runway turn pads / bypass pads are located on the right-hand side of the runway as viewed when looking in the direction of take-off from that runway end.

2.6.3 Runway longitudinal slope values

(Part 139 MOS – 6.06(1)-(7))

The maximum runway longitudinal slope values expressed in subparagraphs 6.06(1) to (6) of the Part 139 MOS have not been exceeded.

2.6.4 Runway transverse slope values

(Part 139 MOS – 6.08(2) (3))

The runway transverse slope values expressed in Table 6.08(2) of the Part 139 MOS have not been exceeded.

2.6.5 Runway surfaces

2.6.5.1 Average surface texture depth

(Part 139 MOS – 1.08(4); Table 6.09(1)-1)

The runway surface 17 / 35 is not sealed.

The preferred average surface texture depth of 1 mm has not been met on the following runway(s). The surface texture depth achieved is equal to or greater than the 0.625 mm minimum average texture depth permitted in Table 6.09(1)-1 of the Part 139 MOS.

Runway designation	Actual average surface texture depth	Reasons why the preferred average surface texture depth has not been met
08 / 26	3 – 5 mm	Age of infrastructure

2.6.5.2 Friction values

(Part 139 MOS – 108(4); Table 6.09(1)-2)

The aerodrome is not used for scheduled international air transport operations.

2.6.6 Longitudinal slope design values on graded runway strip

(Part 139 MOS – 6.18(1) (2))

The design longitudinal slope values expressed in subparagraph 6.18(1) of the Part 139 MOS have not been exceeded.

2.6.7 Runway end safety area (RESA)

(Part 139 MOS – 1.08(4); 6.26(4))

The preferred RESA length as stated in Table 6.26(4) of the Part 139 MOS has not been met on the following runways:

Runway designation	Actual RESA length	Reasons why the preferred RESA length not met
08 / 26	60 m	It meets the minimum length of RESA
17 / 35	60 m	It meets the minimum length of RESA

2.6.8 Taxiway longitudinal slope values

(Part 139 MOS – 1.08(4); 6.40(1) (2) (3))

The maximum taxiway longitudinal slope values expressed in subparagraphs 6.40(1) and (2) of the Part 139 MOS have not been exceeded.

2.6.9 Taxiway transverse slope values

(Part 139 MOS – 6.41(2) (3))

The taxiway transverse slope values expressed in Table 6.41 (2) of the Part 139 MOS have not been exceeded.

2.6.10 Colour of aerodrome markings, markers, signals and signs

(Part 139 MOS – Table 8.03(1))

AS Code R13 (signal red) has been used for all aerodrome markings, markers, signals and signs (as applicable).

2.6.11 Runway edge lights on a reduced runway width

(Part 139 MOS – 9.51(10) (11))

A reduction in runway width has been declared in the AIP for runway 08 / 26. Due to the previously defined runway edge, the runway edge lights are now located beyond three (3) m from the edge of the runway. The runway edge lights will remain in place until they are upgraded or replaced. The location of the runway edge lights has been published in the AIP ERSA.

2.6.12 Spacing of taxiway edge lights

(Part 139 MOS – 9.92(1))

Taxiway edge lights are not provided.

2.7 Facilities with retained compliance

2.7.1 Non-compliant grandfathered facilities

(Part 139 MOS – 11.01(3) (b))

At the time of commencement of the Part 139 MOS, the following aerodrome facilities / OLS do not comply with the new standards.

These aerodrome facilities / OLS did meet a previous standard that was in place at the time the facility was introduced, last upgraded or replaced.

These facilities will be maintained in accordance with the requirements set out in the Part 139 MOS for the same facility.

Facility (grandfathered)	Description of non-compliance
Runway 08 / 26 lights	Runway thresholds lights do not comply, no turn pad lights exist
Runway 08 / 26 surface	Does not meet Table 6.09(1)-1 of Part 1396 of MOS.
Runway 26	No turn pad markings exist
Runway holding position markings	As per figure 8.39(2) Pattern A do not comply
Glider strip 08/26 and 17/35	Markings are not located outside the glider strips and are not the correct dimensions.

2.7.2 Grandfathered facilities – opted-in

(Part 139 MOS – 2.01 opted-in)

All grandfathered facilities remain grandfathered to a previous standard.

3 Aerodrome Operating Procedures and Systems

3.1 Reporting aeronautical data and information

This section documents the procedures for:

- providing information to the AIS provider (Airservices) for publication in the Aeronautical Information Package (AIP)
- notifying Airservices of any changes that are required to be made to the information that is published in the AIP
- reporting to the NOTAM Office (NOF) any changes to the condition of the aerodrome facility, or any hazards, that may adversely affect aviation safety
- reporting hazards that may adversely affect aviation safety to ATC
- making the aerodrome reports readily accessible to relevant personnel
- retaining reports for at least 3 years
- maintaining the integrity of information that is published.

3.1.1 Personnel with responsibilities – data originator

(CASR 175.445; Part 139 MOS – 11.05(3))

3.1.1.1 AIP responsible person

(CASR 175.445(1) (2); Part 139 MOS – 11.05(3))

The nominated AIP responsible person for Benalla Airport is Elise Wood.

Their nomination has been provided to Airservices on the Aeronautical Data Originator (ADO) form that is available on the Airservices Australia website.

To meet the requirements of CASR 175.445, Benalla Rural City Council ensures that the AIP responsible person has been suitably trained so that they have the knowledge and competence to carry out their responsibilities.

Where a change to the AIP responsible person is required, a new ADO form will be submitted to Airservices informing them of the new appointment. This subsection of the manual will also be updated to reflect the change in nomination.

3.1.1.2 NOTAM authorised person(s)

(CASR 175.445(4) (5); Part 139 MOS – 11.05(3))

Persons who are authorised to request the issue, review, and cancellation of NOTAMs at Benalla Airport are listed below:

NOTAM authorised person(s)	
Elise Wood	Greg Robertson

To meet the requirements of CASR 175.445, **Benalla Rural City Council** ensures that these persons have been suitably trained so that they have the knowledge and competence to request the issue, review and cancellation of NOTAMs.

The list of NOTAM authorised person(s) is also recorded in the NAIPS system that Air services administers.

A NOTAM group manager who is responsible for maintaining and updating the NOTAM group is also recorded in the NAIPS system.

The NOTAM group manager for Benalla Airport is Greg Robertson.

Where a change to the NOTAM group is required, the NOTAM group manager will update the NAIPS system. This subsection of the manual will also be updated to reflect the change in NOTAM authorised person(s).

3.1.2 Changes to published aeronautical information

(CASR 175.455, 175.460; Part 139 MOS – 11.05(1) (a))

The AIP responsible person is authorised to request a change to information that is published in the AIP.

Benalla Rural City Council ensures that all requests for a change adhere to Airservices data quality requirements and are in a format that allows Airservices to readily identify the required change(s) to the existing published data or information, including any consequential changes. As soon as practicable after becoming aware of the change, a request for a change will be made in writing to Airservices at: docs.amend@airservicesaustralia.com.

Benalla Rural City Council ensures that a statement of any consultation undertaken is provided with the request for change if the data is expected to cause an aviation organisation to make plans for changes to the organisations' operating procedures.

Once the request for a change has been submitted, the Aeronautical Data Package / Section 2 of this manual will be amended to reflect the change in aeronautical information.

Benalla Rural City Council endeavours to ensure that long-term changes are planned and incorporated into the AIP. Aeronautical information is updated quarterly. The Airservices document amendment calendar is published on the Airservices website. To best ensure the timely communication of a change to published information, the deadlines for submissions are monitored by the AIP responsible person.

3.1.3 Advising NOTAM Office (NOF) of changes – aerodrome conditions / hazards

(CASR 175.470; Part 139 MOS – 11.05(1) (b) (c))

In the event there is a change to the condition of the aerodrome facility, or there is a hazard to aircraft operations, a NOTAM authorised person will, as soon as possible after the condition or hazard is detected, request the issue of a NOTAM.

To request the issue of a NOTAM, the NOTAM authorised person will complete a NOTAM request form which is available on the Airservices website.

The completed NOTAM request form will be submitted electronically to the Notam Office (NOF) at: nof@airservicesaustralia.com.

Alternatively, a NOTAM request form will be faxed to the NOF. The fax number for the NOF is:
02 6268 5044.

In an emergency or if the matter is urgent, the NOTAM authorised person may phone the NOF to request the immediate issue of a NOTAM. In these circumstances, the NOF can be contacted on:
02 6268 5063.

Urgent reports made by phone will be confirmed as soon as possible by the submission of a NOTAM request form forwarded either by e-mail or facsimile.

On submission of the request to issue a NOTAM, the NOTAM authorised person will obtain a copy of the published NOTAM through NAIPS to check the accuracy of that information which has been published. If an error is discovered, the discrepancy will be reported immediately to the NOF.

NOTAM will normally only be used in the case of operationally significant changes (reportable occurrences) that are required at short notice. The list of reportable occurrences is contained in subsection 3.2.6.1 of this manual.

3.1.4 Reporting hazards that may adversely affect aviation safety to ATC

(Part 139 MOS – 11.05(1) (d))

As the aerodrome is not a controlled aerodrome, hazards that are of an urgent nature and may adversely affect aviation safety for aircraft en-route to the aerodrome will be communicated to Melbourne ATC centre. The contact phone number is 02 6268 4111.

3.1.5 Record keeping - reports

(Part 139 MOS – 11.05(2) (a) (b))

A copy of all NOTAMs requested by Benalla Airport are:

Retained by:	Aerodrome Manager
Stored securely at:	Benalla Rural City Council records department (SF/1785)

A copy of all requests for change(s) to published information that are sent to Airservices docs amend are:

Retained by:	Aerodrome Manager
Stored securely at:	Benalla Rural City Council records department (SF/4052)

Copies of all requests are held on file for a minimum period of three (3) years from the date each request was made.

The AIP responsible person and NOTAM authorised person(s) have access to all reports held on file.

The accuracy and currency of all active NOTAMs requested by Benalla Airport is checked by the aerodrome reporting officer during the serviceability inspection process. Refer to subsection 3.2.4.1 of this manual.

3.1.6 Review of published information

(CASR Part 175.465; Part 139 MOS – 12.09(6) (a) (I); 12.11(11) (d) (I))

The Aerodrome Manager will review, at least once annually, the published aeronautical data and aeronautical information for which the aerodrome is responsible. Documented evidence of each review is:

Retained by:	Aerodrome Manager
Stored securely at:	Benalla Rural City Council records department (SF/4052)

Benalla Rural City Council ensures the records of each review are kept for a minimum period of three (3) years from the date the review was completed.

In the event inaccurate information is identified during the review, the AIP responsible person will notify Airservices immediately.

3.2 Aerodrome serviceability inspections

(Part 139 MOS – 11.03(1) (2))

This section documents the procedures for:

- scheduling, conducting and reporting on the results of routine aerodrome serviceability inspections and additional aerodrome serviceability inspections should the circumstances require them to be conducted
- communicating with ATC during the inspection (if applicable)
- taking prompt follow-up action(s) to ensure the correction of any unsafe conditions
- arranging a technical inspection if an unsafe condition is identified
- maintaining records of inspections.

3.2.1 Positions with responsibilities

(CASR 139.080(2); 139.085(2); Part 139 MOS – 11.03(2) (a)-(d); 13.03(a)-(f))

The Facilities Coordinator is responsible for managing the aerodrome's serviceability inspections, ensuring that they occur in accordance with the requirements of the Part 139 MOS, and this manual.

The following is a list of personnel authorised to perform the functions of a reporting officer. The authorisation allows them to carry out serviceability inspections at Benalla Airport.

Name	Position	Function
Greg Robertson	Aerodrome Manager	Reporting Officer
Elise Wood	Facilities Coordinator	Reporting Officer
Rhonda Gelletly	Volunteer	Reporting Officer
Craig Morrison	Volunteer	Reporting Officer

All personnel appointed as reporting officers have been trained so that they can competently carry out their duties at this aerodrome, without the need for supervision.

Benalla Rural City Council ensures all training activities for reporting officers are recorded to verify achieved competencies.

All reporting officers undergo recurrent training every two to five years as is recommended in guidance material published by CASA.

A training schedule has been established and is maintained by Facilities Coordinator. The training schedule is reviewed regularly to ensure training is completed in a timely manner.

The training records of all reporting officers are:

Retained by:	Aerodrome Manager
Stored securely at:	Benalla Rural City Council records department (SF/4052)

The Reporting Officer is responsible for reporting the results of the inspections.

The Facilities Coordinator is responsible for taking follow-up action if an unsafe condition is identified during the inspection.

3.2.2 Routine serviceability inspections

(Part 139 MOS – 11.03(1) (a) (i); 12.01(2) (3))

The aerodrome has no scheduled air transport operations. A minimum of two (2) aerodrome serviceability inspections are conducted each week (at least 48 hours apart).

The serviceability inspections occur in accordance with the pre-determined schedule below:

Day of Inspection	Inspection time
Tuesday	7.00 am
Friday or Sunday	7.30 am

3.2.3 Additional serviceability inspections

(Part 139 MOS – 11.03(1) (a) (ii); 12.01(1) (a)-(d))

Benalla Airport ensures that the reporting officer conducts additional serviceability inspections immediately any of the following occur:

- following an incident or accident
- a severe wind event, a severe storm or a period of heavy rainfall
- if a hazard to aircraft may be present on the manoeuvring area
- when requested in writing by CASA
- when requested by ATC
- when a pilot or ARFFS provider reports a hazard.

3.2.4 Inspection procedures

(Part 139 MOS – 11.03(1)(b))

When conducting a serviceability inspection, the reporting officer will ensure that the vehicle they use to complete the inspection is:

- in a sound mechanical state to prevent a breakdown, unsafe operation, and any spillage of fuel lubricant or hydraulic fluid
- lit in accordance with the requirements set out in subsection 3.5.3 of this manual
- equipped with a VHF radio capable of monitoring the CTAF and / or ATC frequency.

Reporting officers are instructed to maintain a continuous listening watch of the VHF radio at all times when operating on the manoeuvring area.

Procedures for conducting runway inspections, including the direction of travel, communication procedures, actions in the event of a communication failure or vehicle breakdown etc. are documented in the Procedures for Benalla Aerodrome Airport Reporting.

This is a subsidiary document to this manual and is available at Airport Reporting Office and SF/1785.

3.2.4.1 Inspection items

(Part 139 MOS – 12.03(3)-(11))

When performing each serviceability inspection, aerodrome reporting officers will check:

1. The surface condition of the movement area (which also includes runway and taxiway strips) looking for the following:
 - a. surface irregularities, including cracking or spalling
 - b. pavement deflections, including rutting or slipping
 - c. water pooling or ponding
 - d. build-up of rubber or other contaminants which may reduce runway surface friction
 - e. surface damage caused by the spillage of corrosive fluids or oil
 - f. subsurface leaks or pressure, including broken water mains or inadequate or defective drainage
 - g. scour or erosion ditches within unsealed areas, including step-downs from sealed runway surfaces
 - h. termite mounds, sink holes or other ground obstacles obscured, or not obscured, by grass
 - i. soft ground, particularly in combination with surface roughness and slipperiness
 - j. any other signs of pavement distress which have the potential to develop into a hazard for aircraft.
2. Aerodrome markings, lighting, wind direction indicators and ground signals for the following:
 - a. loss of visibility markers and markings
 - b. incorrect markers or markings
 - c. any disturbance to the correct intensity level and alignment of lights
 - d. discoloured or dirty lenses
 - e. unserviceable lights, incorrectly fitted lights, or lights that are misaligned
 - f. stand-by power equipment, to ensure that it is serviceable including the availability of fuel (if applicable)
 - g. the condition of light bases, MAGS and navigation equipment within the movement area, including strips
 - h. exposed edges around concrete footings and other aerodrome installations within the runway and taxiway strips
 - i. damage to the wind indicator assembly or mounting
 - j. for wind indicators – damage to sleeve fabric or loss of conspicuous colour
 - k. the correct operation of the pilot activated lighting (if installed)
 - l. the correct operation of the broadcast aerodrome weather station (if installed).

3. The cleanliness of the movement area looking for the following:
 - a. foreign objects, for example, aircraft fastening devices and other aircraft parts
 - b. work tools, small items of equipment and personal items
 - c. debris, for example, sand, loose rocks, concrete, wood, plastic, pieces of tyre, mud and any other foreign bodies
 - d. hazards created during and after construction activity, including hazards arising from vehicles and plant travelling over unpaved, wet or contaminated areas.
4. For any obstacles infringing the take-off, approach, transitional and PANS-OPS surfaces that are visible from the aerodrome, specifically:
 - a. the take-off, approach and transitional elements of the OLS
 - b. PANS-OPS airspace, including any critical obstacles that would otherwise affect the safety or integrity of PANS-OPS airspace.
5. For wildlife on, or in the vicinity of, the movement area:
 - a. the condition of aerodrome fencing and the security of access points to the movement area
 - b. monitoring the presence and behaviour of any wildlife on, or likely to be on, the aerodrome, and identifying seasonal and environmental conditions which may act as an attractant
 - c. monitoring evidence of wildlife shelter provided by aerodrome infrastructure, for example, buildings, equipment and gable markers
 - d. checking for off-aerodrome wildlife attraction sources, observable from the aerodrome site, for example, mowing activities, seeding, standing water bodies, uncovered waste disposal, deceased wildlife or offal
 - e. the presence and operating condition of any wildlife hazard mitigating equipment incorporated into the wildlife hazard management procedures for the aerodrome.
6. Where the runway and runway strip surfaces are unrated, an empirical assessment of the runway, and the runway strip if it is available for aircraft operations, will be conducted to confirm their suitability.
7. Aerodrome fencing and signage to:
 - a. identify any damage
 - b. confirm gates are secured
 - c. ensure there has been no attempted entry onto the manoeuvring area by either land-based wildlife or unauthorised persons.
8. Active NOTAMs requested by the aerodrome to ensure they are accurate and current.
9. The aerodrome frequency response unit to verify that it is functioning correctly.

All items and the areas that are to be checked as part of each aerodrome serviceability inspection are identified in a checklist titled Aerodrome Serviceability Inspection Checklist.

The checklist is a subsidiary document to this manual and is available at: Airport Reporting Office and SF/3863.

3.2.5 Communicating with ATC during inspection (if applicable)

(Part 139 MOS – 11.03(1) (g))

The aerodrome is not a controlled aerodrome; therefore, this subsection is NOT APPLICABLE.

3.2.6 Reporting inspection results

(Part 139 MOS – 11.03(1) (c); 12.03(12))

Benalla Rural City Council ensures that any significant object found during the serviceability inspection that could reasonably be expected to have an immediate adverse effect on the safety of an aircraft is reported to ATC in accordance with subsection 3.1.4 of this manual.

At the completion of each aerodrome serviceability inspection, the reporting officer records the following information on the Aerodrome Serviceability Inspection Checklist:

- the date and time the serviceability inspection was completed
- the results of the inspection
- a description of any remedial action taken or scheduled to be taken.

All identified faults that require further corrective action are entered in the Asset Management – Maintenance Facilities (Buildings) Benalla Airport SF/1785 and a purchase order is raised. Any works activities that are required to correct these faults are conducted in accordance with the works protocols set out in section 3.10 of this manual.

When the fault has been rectified, an entry to confirm the corrective action is complete is made in the Asset Management – Maintenance Facilities (Buildings) Benalla Airport SF/1785.

Faults that remain open are subject to regular monitoring.

In the event the aerodrome serviceability inspection identifies a reportable occurrence as prescribed in subsection 3.2.6.1 below, a NOTAM authorised person is to contact the NOF to request the issue of a NOTAM. This request is to be made as soon as possible after it is observed and in accordance with subsection 3.1.3 of this manual.

The NOTAM authorised person has been instructed to provide as much detail as available. Should additional information become known, a revised NOTAM is to be submitted as soon as possible.

At a controlled aerodrome, the aerodrome reporting officer is to advise ATC of any finding identified during the serviceability inspection that requires the issue of a NOTAM.

3.2.6.1 Reportable occurrences to the NOTAM Office

(Part 139 MOS – 11.03(1) (c); 12.04(1) (a)-(i))

A report to the NOF will be made on identification of the following:

- published runway information – any change (whether temporary or permanent), including changes to current information contained in permanent NOTAMs or in the AIP
- aerodrome works affecting the manoeuvring area or the obstacle limitation surfaces – includes time-limited works that require more than 10 minutes to restore normal safety standards
- aerodrome lighting / obstacle lighting – outage or unserviceability, unless the outage or unserviceability is fixed immediately, or does not meet the required outage limits
- temporary obstacles to aircraft operations, unless the temporary obstacle is removed immediately
- any significant increase in, or concentration of, wildlife hazards on or near the aerodrome which constitute a danger to aircraft, unless the wildlife causing the hazard is dispersed immediately
- any change to gradients within the take-off climb area that is due to a new or changed obstacle which results in a change to the gradient of more than 0.05% from the published gradient data for the runway, unless that new or changed obstacle can be removed without delay
- the emergence of new obstacles, unless the new obstacle is removed immediately
- a radio navigation aid or landing aid owned by Benalla Rural City Council is unserviceable or has returned to service
- any other event which affects the safety of aircraft using the aerodrome, unless the event is ceased immediately.

3.2.7 Prompt follow-up action to correct unsafe conditions

(Part 139 MOS – 11.03(1) (d); 12.04(2) (3(4))

In the event the aerodrome serviceability inspection identifies an unsafe condition, the aerodrome reporting officer will:

- immediately report the unserviceability to ATC (if applicable)
- if urgent, advise the NOF via the phone to request the immediate issue of a NOTAM
- mark the unserviceable portion of the movement area so that it is not available by deploying the appropriate markers, markings, and lighting in accordance with the Part 139 MOS
- submit a request to issue a NOTAM (if applicable)
- if issued, verify the accuracy of the NOTAM information published by Airservices
- arrange for a technical inspection as soon as practicable
- arrange for repairs to the affected area ensuring that works requirements are adhered
- confirm the suitability of the repairs and the serviceability of the affected areas before returning to normal operations
- cancel the NOTAM (if applicable)
- advise ATC (if applicable).

3.2.8 Technical inspection of identified unsafe condition

(Part 139 MOS – 11.03(1) (e); 12.08; 12.09; 12.10(2) (d))

If any unsafe condition is identified during the serviceability inspection, a technical inspection of the area impacted by the defect or deficiency will be immediately carried out in accordance with section 12.09 of the Part 139 MOS.

When arranging the technical inspection, the Aerodrome Manager will ensure that the person engaged to conduct the inspection has the required technical qualifications and experience, or demonstrable relevant experience, as required by section 12.10 of the Part 139 MOS.

A copy of the person's qualifications and relevant experience will be included in the resulting technical inspection report or maintained as part of the aerodrome manual.

On receipt of the technical inspection report, the recommendations will be reviewed by Aerodrome Manager and agreed corrective actions will be entered into a corrective actions plan. Where a recommendation is not supported, the reasons the recommendation was not supported will also be documented in the corrective actions plan. A timeframe for implementation will be recorded.

The corrective actions plan will be retained on file at Asset Management – Maintenance Facilities (Buildings) Benalla Airport SF/1785. The corrective actions plan will be reviewed regularly and updated by Aerodrome Manager.

The technical inspection report will be retained for a minimum period of three (3) years at Asset Management – Maintenance Facilities (Buildings) Benalla Airport SF/1785.

Within 30 days of receiving the technical inspection report, the Aerodrome Manager will send a copy of the report to CASA via e-mail at: aerodromes@casa.gov.au

3.2.9 Maintaining inspection records

(Part 139 MOS – 11.03(1) (f); 11.04(1) (d); 12.03(12))

Completed inspection records are:

- Filed: Electronically
- Stored securely at: Asset Management – Reporting Aerodrome Serviceability Inspection Report SF/3863.

The results of each aerodrome serviceability inspection are retained for a minimum period of two (2) years from the date the inspection was completed.

3.3 Aerodrome lighting

This section documents the procedures for:

- inspecting and maintaining aerodrome lighting, and obstacle lighting that is maintained by Benalla Rural City Council
- carrying out routine maintenance and emergency maintenance
- monitoring the supply of secondary and stand-by power (if provided)
- responding to a partial or total power system failure

- taking follow-up action(s) to correct deficiencies
- maintaining records of inspections
- monitoring hazardous lights, lasers, and reflection or glare within the aerodrome boundary.

3.3.1 Personnel with responsibilities

(Part 139 MOS – 11.04(2) (a)-(f))

The following individuals or positions have responsibilities for each lighting-related activity:

(a) Carrying out lighting inspections

Individual / position: Airport Reporting Officers

(b) Maintaining the records of inspections

Individual / position: Airport Reporting Officers

(c) Taking follow-up action if unsafe condition identified during inspection

Individual / position: Facilities Coordinator / Aerodrome Manager

(d) Operating aerodrome lighting, including switching systems, back-up supply systems, and portable lighting equipment

Individual / position: Facilities Coordinator / Aerodrome Manager

(e) Performing maintenance on aerodrome lighting

Individual / position: Facilities Coordinator / Aerodrome Manager

(f) Monitoring hazardous lights, lasers, reflection or glare within the aerodrome boundary

Individual / position: Airport Reporting Officers

3.3.2 Aerodrome lighting – inspection and maintenance

(Part 139 MOS – 9.136(2); 9.138(4); 11.04(1) (a))

The reporting officer carries out a visual inspection of aerodrome lighting as part of the routine serviceability inspection process. The lights will be switched on so that their serviceability can be assessed.

At least one inspection each week will occur after sunset or before sunrise.

The inspection, reporting the results of the inspection, and any follow-up actions that are required, will occur in accordance with the serviceability inspection process outlined in section 3.2 of this manual.

In addition to the serviceability inspection, inspection and maintenance activities for each lighting system will occur in accordance with the table below.

Aerodrome lighting systems	Inspection schedule	Items to be inspected or checked	Maintenance activities
Runway edge lighting, runway holding, primary windsock and taxiway lighting	Weekly	Lights PAL test frequency 123.4 duration 30 minutes = 20 minutes + 10 flash. Lights Runway – 20 edge and 12 end. Lights Taxiway – 36. Lights runway holding – 3. Lights windsock – 10.	Visual inspection of all lights to ensure adequate function for required duration. Record faults on aerodrome serviceability inspection checklist and report to Facilities Coordinator.

3.3.3 Obstacle lighting maintained by aerodrome operator – inspection and maintenance

(Part 139 MOS – 11.04(1) (a))

There is no obstacle lighting maintained by Benalla Airport; therefore, this subsection is NOT APPLICABLE.

3.3.4 Portable runway lights – inspection and maintenance

(Part 139 MOS – 9.07(3) (a))

No portable runway lights are available for use at the aerodrome; therefore, this subsection is NOT APPLICABLE.

3.3.5 Monitoring secondary power supply

(Part 139 MOS – 9.04; 9.05; 11.04(1) (b))

A secondary power supply is not available at Benalla Airport; therefore, this subsection is NOT APPLICABLE.

3.3.6 Monitoring standby power supply

(Part 139 MOS – 11.04(1) (b))

Standby power is not available at Benalla Airport; therefore, this subsection is NOT APPLICABLE.

3.3.7 Lighting inspections and checks

(Part 139 MOS – 11.04(1) (c))

In addition to the inspections outlined in subsection 3.3.2, inspection and maintenance activities for each lighting system will occur in accordance with the table below:

Aerodrome lighting systems	Inspection schedule	Items to be inspected or checked	Maintenance activities
PAL	Six monthly	All light fittings and fixtures including spares.	Minor maintenance completed at time of inspection if required. Check quantities and order equipment as required.

Procedures for recording inspection and maintenance activities are included in subsection 3.3.8 of this manual.

Aerodrome lighting inspections carried out as part of the Aerodrome Technical Inspection will be conducted in accordance with section 3.9 of this manual.

Each lighting system and the list of specific elements to be inspected and checked is contained in Benalla Airport Lighting Inventory Checklist, which is available at Airport Reporting Office and SF/3863 (DOC20/53866).

3.3.8 Maintaining lighting inspection records and follow-up actions

(Part 139 MOS – 11.04(1) (d))

At the completion of each lighting inspection, the Airport Reporting Officer records the following information on the Benalla Airport Lighting Inventory Checklist:

- the date and time the inspection was completed
- the person responsible for completing the inspection
- the results of the inspection
- a description of any action taken.

All identified faults that require further corrective action are to be entered into the Asset Management – Maintenance Facilities (Buildings) Benalla Airport SF/1785. Any works activities that are required to correct these faults are to be conducted in accordance with the works protocols set out in section 3.10 of this manual.

When the fault has been rectified, an entry will be made in the Asset Management – Maintenance Facilities (Buildings) Benalla Airport SF/1785 confirming the corrective action is complete.

Faults that remain open are to be subject to regular monitoring.

3.3.9 Switching lights on and off and intensity selection

(Part 139 MOS – 11.04(1) (e))

The lighting system is operated by: PAL

The data on the operating current and the corresponding intensity selection is recorded in the table below:

Lighting system	Operating current	Intensity selection
PAL	CTAF 123.4	LIRL

The procedures for switching lights on and off, including the intensity selection, are as follows: Lights are turned on by radio frequency CTAF 123.4 and depressing transmitting button three times. Lights will turn off automatically after 30 minutes.

To manually turn lights on unlock switchboard located at North East corner of Aviation Museum and turn to lever to manual setting. At completion of test turn lever back to auto.

3.3.10 Back-up arrangements for PAL system

(Part 139 MOS – 9.23(1) (b); 11.04(1) (e))

The pilot-activated lighting (PAL) system has been designed so that, if it fails, it can be manually activated.

A bypass switch has been provided that allows manual activation of the lights. The bypass switch is located in the PAL switchboard on the NE corner of the Aviation Museum.

Benalla Airport has issued written authorisation for manual activation of the lights, if required, to Aerodrome Manager. A copy of the authorisation has been retained on file and is available at Benalla Rural City Council records department SF/3863.

Aerodrome Manager has been issued a key to readily access the manual activation switch at all times when required.

3.3.11 Routine and emergency lighting maintenance

(Part 139 MOS – 11.04(1) (f))

There is no lighting installed at Benalla Airport; therefore, this subsection is NOT APPLICABLE.

3.3.12 Partial or total power system failure

(Part 139 MOS – 11.04(1) (g))

There is no lighting installed at Benalla Airport; therefore, this subsection is NOT APPLICABLE.

3.3.13 Monitoring hazardous lights, lasers, reflection or glare

(Part 139 MOS – 9.143(2) (a) (3) (4) (5) (8); 9.144(2); 11.04(1) (h))

The Aerodrome Manager is to notify CASA in writing immediately when they become aware of any installation, or a proposal to install, or use any installation, equipment or laser, outside the aerodrome boundary that may have lighting or lighting intensity greater than that specified in Figure 9.144(2) of the Part 139 MOS.

Before proceeding to install or use any installation, equipment, or lasers within the boundary of the aerodrome, the Aerodrome Manager will report the following proposals to CASA so that a hazard assessment can be undertaken:

- installation of any equipment or lighting which would reflect sunlight (including solar panels, lasers, mirrors, or reflective building cladding)
- lighting that will emit multiple colours from a single source
- lighting that will result in rapid change in light colour
- flashing lights
- lighting that may have a lighting intensity that is greater than that specified in Figure 9.144(2) of the Part 139 MOS.

Benalla Airport will not proceed with any proposal until CASA has assessed, and approved in writing, confirming the installations will not cause a hazard to aircraft operations.

3.3.14 Commissioned lighting systems

(Part 139 MOS – 9.18(8))

There are no lighting systems at Benalla Airport that are required to be, or have been commissioned; therefore, this subsection is NOT APPLICABLE.

3.3.15 Commissioning a new or upgrading / replacing an existing lighting system

(Part 139 MOS – 9.17(1)-(10); 9.18(1)-(8))

Benalla Airport will not commission a new aerodrome lighting system, or permit the use of a lighting system that has been replaced or upgraded, until:

- compliance statements from the manufacturer and the supplier, or, a test report from an accredited laboratory (as per subparagraph 9.17(1) of the Part 139 MOS), confirm that light fitting types, models and versions comply with the standard for photometric and other relevant characteristic specified in the Part 139 MOS
- a ground check has been completed by an appropriately qualified person and written evidence has been provided that confirms the lighting system meets the requirements of the Part 139 MOS
- if applicable, a flight check has been completed by a CASA approved person and written evidence has been provided that confirms the lighting system meets the requirements of the Part 139 MOS.

Once full compliance with the Part 139 MOS has been confirmed, a NOTAM authorised person is to request the issue of a NOTAM advising that the lighting system is available. The AIP responsible person is to advise Airservices of the particulars of the lighting system for publication in the AIP.

The Aerodrome Manager will provide a copy of the ground check determination, and the flight check report (if applicable), to CASA via e-mail to: aerodromes@casa.gov.au.

All compliance statements / laboratory test reports, ground check, and flight check reports will be retained by the Aerodrome Manager and stored securely at Benalla Rural City Council.

Subsection 3.3.14 of this manual is to be amended to include the particulars of the newly commissioned lighting system(s).

All reports and commissioning records are retained for as long as the lighting system remains in service.

3.4 Unauthorised entry to aerodrome

(Part 139 MOS – 11.11)

This section details how unauthorised persons, vehicles, equipment, mobile plant, animals, or other things that may endanger the safety of aircraft, are prevented from entering onto the movement area, including procedures for:

- controlling airside access
- monitoring airside access control points and barriers.

3.4.1 Controlling airside access

(Part 139 MOS – 11.11(a))

To prevent unauthorised access by persons, vehicles, equipment, mobile plant, animals and other things that may endanger aircraft safety, a fence has been installed around the perimeter of the airside boundary:

- Type of fence: Steel with dog mesh and wire, and steel panels
- Height of fence: 1.2 m

Benalla Rural City Council ensures that only authorised persons are allowed unescorted access to the movement area and other operational areas of the aerodrome.

For those persons not authorised, escorted access is provided at all times whilst airside by authorised and trained personnel.

Airside access gates are:

- Located at: entrance into airport west side.
- Always locked by: Electronic access control system

- Keys and / or electronic access cards are issued by: Aerodrome Manager
- A register of issued keys and / or access cards is maintained by: Aerodrome Manager.
- An audit of issued and unissued keys and / or access cards is conducted annually by: Aerodrome Manager.

Restricted access signs are located at regular intervals along the boundary fence, at each airside access gate, and at each building that provides direct access airside. The signs are located such that at least one sign is visible to a person approaching the secure perimeter.

Airport tenants are responsible for controlling airside access through their leased areas. Any unauthorised entry observed by the tenant is to be reported immediately to Aerodrome Manager.

Only authorised vehicles driven by an authorised airside driver are permitted airside. Refer to section 3.5 of this manual.

Animals are not permitted airside.

3.4.2 Monitoring airside access points and barriers

(Part 139 MOS – 11.11(b))

The reporting officer carries out a visual inspection of the perimeter fence and airside access gates as a part of the aerodrome serviceability inspection process. The inspection, reporting the results of the inspection, and any follow-up action(s) that is required, is to occur in accordance with the process outlined in section 3.2 of this manual.

Additional fence and access gate inspections are conducted:

- By the Facilities Coordinator.
- Fortnightly.
- Via CCTV review completed weekly.

These additional inspections are recorded: Aerodrome Serviceability Inspection Checklist. In the event there is evidence of unauthorised entry by persons or wildlife, or the fence or access gates are compromised, the fence or access gates are to be re-secured where possible, and an airside inspection undertaken immediately to ensure there are no unauthorised persons, or wildlife, on the aerodrome.

Damaged fences or gates will be entered in the Aerodrome Serviceability Inspection Checklist in accordance with the process outlined subsection 3.2.6 of this manual, and are repaired as soon as possible.

3.5 Airside vehicle control

(Part 139 MOS – 11.14)

3.5.1 Permit system for airside vehicles

(Part 139 MOS – 11.14(a); 14.02(a))

A permit system for airside vehicles is not required as the aerodrome does not, in a financial year, have more than 350,000 air transport passenger movements, or more than 100,000 aircraft movements; therefore, this subsection is NOT APPLICABLE.

3.5.2 Vehicles and ground equipment operated airside

(Part 139 MOS – 14.03(1) (a) (b))

Benalla Airport ensures that all vehicles and ground equipment operated airside are maintained in a sound mechanical state to prevent a breakdown or unsafe operation, and any spillage of fuel, lubricant or hydraulic fluid.

Benalla Airport requires:

- vehicles operating airside to hold state registration confirming they are maintained in a roadworthy condition
- in the event an airside vehicle does not, or cannot obtain state registration, the owner of the vehicle is to provide a statement of vehicle condition from a qualified mechanic prior to accessing the airside for the first time. A vehicle condition statement is valid for a maximum period of 12 months. If the owner still intends for the vehicle to be operated airside, a new vehicle condition statement is required to be presented prior to the end of that 12-month period
- evidence that vehicles comply with lighting and radio requirements (as applicable)
- a certificate of insurance with valid cover for the use of the vehicle within the airside area of the aerodrome.

A list of authorised vehicles is:

- Maintained by: Aerodrome Manager
- Available at: Benalla Rural City Council Records Department DOC17/57288.

To ensure the requirements of this manual are achieved, Benalla Airport can inspect or can require an inspection to be carried out on any vehicle or ground equipment that is operating airside. The Aerodrome Manager will annually request authorised personnel to advise the authorised vehicle type, make, model and registration number.

In the event that an inspection is not carried out, or the inspection identifies an unsafe condition that may create a hazard to aviation safety, the vehicle is to be denied access. If the vehicle is already airside, the operator of the vehicle is to be instructed to remove the vehicle from the airside.

A list of vehicles that have been removed from the airside or denied access is:

- Maintained by: Aerodrome Manager

- Available at: Benalla Rural City Council Records Department DOC17/57288

A vehicle that is denied access or has been removed from the airside at the direction of Benalla Airport is not to be authorised to re-enter the airside until an inspection has been completed and a satisfactory vehicle condition statement has been received.

3.5.3 Airside vehicle lighting requirements

(Part 139 MOS – 14.05(1)-(11))

As the aerodrome does not have scheduled air transport operations and the aerodrome is not an international aerodrome, vehicles operating during the day, as a minimum, must have a bright approved roof mounted flashing light.

Vehicles operating at night must have a bright approved roof mounted flashing light.

Except for a vehicle that is under escort, all vehicles will be lit when moving or operating on:

- all access tracks
- a runway / runway strip
- a taxiway / taxiway strip
- the movement area
- and around hangers.

The roof top lights should have a peak intensity between 40cd and 400cd.

3.5.4 Vehicles on manoeuvring area

(Part 139 MOS – 14.03(4) (8); 14.04)

Except for a vehicle that is under escort, all vehicles operating on the runway, runway strip, taxiways and taxiway strips have a VHF receiver capable of monitoring the CTAF and / or ATC frequency. All drivers are to maintain a listening watch through the VHF receiver. Only those persons that hold an Aeronautical Radio Operator Certificate (AROC) are permitted to transmit.

3.5.5 Airside drivers – training

(Part 139 MOS – 14.01(1)-(4), 14.02(b); 11.14(b))

As Benalla Airport does not have scheduled air transport operations, drivers not under escort, and who are operating a vehicle airside, are inducted to understand the following:

- the terminology used to describe the movement area
- the purpose and location of all airside areas
- hazardous or prohibited areas on the airside
- the significance of aerodrome visual aids and signs.

Induction details:

- induction method: Information supplied upon approval of Airside Access token SF/2988.

3.5.6 Vehicles in proximity to aircraft

(Part 139 MOS – 14.03(3))

Airside drivers must give way to aircraft.

Airside vehicles are to remain clear of the runway, runway strip, taxiway(s), or taxiway strip(s) when they are in use or available to be used by aircraft unless there is a safety-related or operational requirement for vehicles to operate in these areas.

Airside vehicles are not to be driven:

- in a manner likely to endanger the safety of any person or create a hazard to aircraft operations
- under an aircraft, or within three (3) m of lateral clearance, or within 1 m of overhead clearance, of any part of the aircraft, except when required for servicing the aircraft
- within 15 m of refuelling aircraft
- when drivers are affected by alcohol or drugs as per CASR Part 99.

All vehicles operated within 15 m of an aircraft's fuel tank filling points and vent outlets during fuelling operations comply with Appendix 1 of Civil Aviation Order 20.9.

3.5.7 Movement area speed limits

(Part 139 MOS – 14.03(2) (a))

Speed limits are explained and provided to all drivers during their driver training and / or induction.

Drivers must adhere to the following speed limits:

Location	Speed limit (km / h)
Perimeter roads	20 km / h
Aprons	20 km / h
Taxiways	20 km / h
Runways	20 km / h
During low visibility operations	20 km / h

The above speed limits are sign posted at the following locations:

At the entrance airside and along frequently used perimeter access tracks.

3.5.8 Escort service procedures

(Part 139 MOS – 14.01(5))

Only authorised third party drivers are permitted to provide vehicle escorts airside.

At any one time, an escort driver is not authorised to escort more than the following number of vehicles:

Max. number of vehicles: 2

The escort driver is fully responsible for the driver(s) under escort. Escort driver must remain with 20m of driver under escort. Driver under escort must be accompanied at all times whilst mobile airside.

All airside drivers providing an escort service are monitored for adherence with these requirements periodically by the reporting officer.

In the event an airside driver or driver under escort is observed to not be following the rules for operating a vehicle airside, or otherwise creating an unsafe condition, all respective vehicles and their drivers are to be escorted from the airside, and any authorisations are withdrawn.

Records of drivers authorised to conduct escorts are:

Maintained by: Facilities Coordinator

Stored securely at: Benalla Rural City Council records department (SF/2988).

3.5.9 Monitoring and enforcing traffic rules

(Part 139 MOS – 14.03(2) (b))

The aerodrome reporting officer is responsible for periodically monitoring the operation of vehicles airside in accordance with the following:

BENALLA AIRPORT MONITORING AND ENFORCING TRAFFIC

CONSIDER THE FOLLOWING	Yes	No	Comments / Action
Separation			
Are separate entries and exits provided for vehicle and pedestrians?			
Do the entries and exits protect pedestrians from being struck by vehicles?			
Does the layout of the airport effectively separate pedestrians, vehicles and aircraft?			
Are vehicle entry points sufficient to meet the demands of the airport?			
Vehicle routes			
Are the roads within the airport suitable for the types and volume of traffic?			
Are traffic direction clearly marked and visible?			
Are vehicle routes wide enough to separate vehicles and pedestrians and for the largest vehicle using them?			

CONSIDER THE FOLLOWING	Yes	No	Comments / Action
Do vehicle routes have firm and even surfaces?			
Are vehicle routes kept clear from obstructions and other hazards?			
Are vehicle routes well maintained?			
Do vehicle routes avoid sharp or blind corners?			
Vehicle movement			
Are vehicles slowed to safe speeds, for example speed limiters on mobile plant or chicanes on vehicle routes?			
Do drivers use the correct routes, drive within speed limits and follow site rules?			
Signs			
Are there speed limit signs?			
Is there enough lighting to ensure signs are visible, particularly at night?			
Warning devices			
Are roof mounted flashing lights installed on all vehicles and are they operational?			
Information, training and supervision			
Do powered mobile plant operators have relevant high risk work licences? Are they trained in operating the particular model of plant being used?			
Have workers received site specific training and information on airport traffic hazards, speed limits, parking and loading areas?			
Is information and instruction about safe movement around the airport provided to visitors and external drivers?			
Is the level of supervision sufficient to check traffic movement and ensure safety of pedestrians and drivers?			
Personal Protective Equipment (PPE)			
Is PPE, like high visibility clothing, worn by all people airside at the airport?			
Vehicle safety			

CONSIDER THE FOLLOWING	Yes	No	Comments / Action
Have vehicles and powered mobile plant been selected which are suitable for the tasks to be done?			
Do vehicles have direct visibility or devices for improving vision like external and side mirrors and reversing sensors?			
Are UHF radios on and set to CTAF 125.6 for listening to airport movement?			
Are drivers suitably trained in the use of the radio?			
Reporting and enforcement			
Visually monitor speed, driving style and movement around parked aircraft while the driver is active at Benalla Airport. Does it comply with Benalla Airport requirements? (if no, please indicate how they are not complying and if possible obtain vehicle registration details, eg take photo of registration plates)			
Benalla Rural City Council Authorised Officer to review any physical evidence presented and discuss with the Airport Reporting Officer evidence witnessed and complete Witness Statement DOC18/195890.			
Regulatory Compliance and Enforcement for breaches of an Act, Regulation or Bi-Law will be actioned by a Benalla Rural City Council Authorised Officer.			
All reporting and enforcement documents to be recorded and saved in SF/3863.			

Appropriate action is to be taken against drivers who are clearly in breach of displayed signage, markings, or speed limits. This may include withdrawing their authority to operate a vehicle airside.

3.6 Aircraft parking control

(Part 139 MOS – 11.15(1))

3.6.1 Aircraft parking control personnel

(Part 139 MOS – 11.15(2) (g) (i) (ii))

Benalla Airport does not have scheduled international air transport operations, and there is no hazard resulting from apron congestion. Aircraft parking control procedures have not been established at the aerodrome; therefore, this subsection is NOT APPLICABLE.

3.6.2 Liaison with ATC – apron management

(Part 139 MOS – 11.15(2) (a))

The aerodrome does not have scheduled international transport operations and apron congestion does not create a hazard to aircraft operations. Aircraft parking control procedures have not been established at the aerodrome; therefore, this subsection is NOT APPLICABLE.

3.6.3 Allocating aircraft parking positions

(Part 139 MOS – 11.15(2) (b))

The aerodrome does not have scheduled international transport operations and apron congestion does not create a hazard to aircraft operations. Aircraft parking control procedures have not been established at the aerodrome; therefore, this subsection is NOT APPLICABLE.

3.6.4 Engine start and aircraft push-back clearances

(Part 139 MOS – 11.15(2) (c))

The aerodrome does not have scheduled international transport operations and apron congestion does not create a hazard to aircraft operations. Aircraft parking control procedures have not been established at the aerodrome; therefore, this subsection is NOT APPLICABLE.

3.6.5 Aerodrome visual docking guidance systems

(Part 139 MOS – 11.15(2) (d))

The aerodrome does not have scheduled international transport operations and apron congestion does not create a hazard to aircraft operations. Aircraft parking control procedures have not been established at the aerodrome; therefore, this subsection is NOT APPLICABLE.

3.6.6 Marshalling service

(Part 139 MOS – 11.15(2) (e))

The aerodrome does not have scheduled international transport operations and apron congestion does not create a hazard to aircraft operations. Aircraft parking control procedures have not been established at the aerodrome; therefore, this subsection is NOT APPLICABLE.

3.6.7 Leader (van) service or follow-me service

(Part 139 MOS – 11.15(2) (f))

The aerodrome does not have scheduled international transport operations and apron congestion does not create a hazard to aircraft operations. Aircraft parking control procedures have not been established at the aerodrome; therefore, this subsection is NOT APPLICABLE.

3.6.8 Apron safety management procedures

(Part 139 MOS – 11.15(3))

The reporting officer(s) is responsible for periodically monitoring activities occurring on the apron to check that:

- no person, vehicle, or equipment is within the potential jet blast area behind the aircraft
- aprons are free from loose stones and other material that may cause FOD
- all equipment is appropriately stored in marked equipment storage areas
- vehicles do not pass behind aircraft that are displaying anti-collision beacons
- tug operators are adhering to the line marking guidance provided
- wheel chocks are appropriately positioned on parked aircraft.

As trends may identify changes to apron safety management procedures, reported incidents and hazards are also reviewed by:

- Position / committee: Aerodrome Manager

3.6.9 Alternative separation distances and apron markings

3.6.9.1 Reduced separation distances – VDGS

(Part 139 MOS – 6.58(1) (4) (a) (b))

The aerodrome does not have VDGS; therefore, reduced separation distances are not permitted.

3.6.9.2 Aircraft type designator markings

(Part 139 MOS – 8.49(3) (d))

The aerodrome does not have scheduled domestic or international transport operations and apron congestion does not create a hazard to aircraft operations. Aircraft type designator markings have not been established at the aerodrome; therefore, this subsection is NOT APPLICABLE.

3.6.9.3 Alignment lines

(Part 139 MOS – 8.65(5))

The aerodrome does not have scheduled domestic or international transport operations and apron congestion does not create a hazard to aircraft operations. An alignment line have not been established at the aerodrome: therefore, this subsections is NOT APPLICABLE.

3.6.9.4 Push-back operator guidance markings

(Part 139 MOS – 8.70(4))

The aerodrome does not have scheduled domestic or international transport operations and apron congestion does not create a hazard to aircraft operations. Push-back vehicle operator guidance markings have not been established at the aerodrome, this subsection is NOT APPLICABLE.

3.6.9.5 Passenger path markings

(Part 139 MOS – 8.76(2) (b))

The aerodrome does not have schedule domestic or international transport operations and no terminal building or designated parking areas are located at Benalla Airport. Passenger path markings have not been established at the aerodrome, this subsection is NOT APPLICABLE.

3.6.9.6 Miscellaneous area line markings

(Part 139 MOS – 8.77(2))

There are no miscellaneous area line markings displayed on the apron(s).

3.7 Aerodrome obstacle control

3.7.1 Obstacle control personnel

(Part 139 MOS – 11.06(2) (a)-(d))

The following person(s) have responsibilities for obstacle control:

Individual or position	Responsibilities
Airport Reporting Officer	Monitoring surfaces related to the OLS and terminal instrument flight procedures (PANS-OPS)
Aerodrome Manager	<ul style="list-style-type: none">▪ Notifying CASA or the procedure designer when a proposed or actual infringement if the prescribed airspace is identified▪ Implementing obstacle control within the aerodrome boundary▪ Liaison and facilitation of obstacle control outside the aerodrome boundary

3.7.2 Monitoring take-off, approach and transitional surfaces

(Part 139 MOS – 11.06(1) (a) (I))

Benalla Airport has established the obstacle limitation surfaces (OLS) for each runway that meet the physical dimensions for approach and take-off runways as set out in Chapter 7 of the Part 139 MOS.

The particulars of each surface are shown on an OLS plan for the aerodrome which is available at Benalla Rural City Council records department.

The aerodrome reporting officer will visually scan the OLS as part of the aerodrome serviceability inspection in section 3.2 of this manual to identify the emergence of any new or potential obstacles.

A survey that assesses the take-off, approach, and transitional surfaces, is completed as part of the manual inspection process conducted in accordance with section 3.9 in this manual.

This survey is used to verify the accuracy of published information. On receipt of the survey, the results are compared against the aerodrome's information published in the AIP to ensure that there are no new obstacles, or that the height of existing obstacles has not changed.

3.7.3 Proposed or actual infringements – OLS

(Part 139 MOS – 11.06(1) (d) (i))

3.7.3.1 Proposed OLS infringements

(Part 139 MOS – 7.01(1); 7.18(1) (b); 17.19(1); 11.06(1) (d) (i))

If a proposed object or structure is identified as likely to be an obstacle, details of the proposal are to be sent to CASA in writing by: Aerodrome Manager.

On receipt of CASA's written assessment, the relevant planning authority is to be advised of the result of the assessment.

Benalla Airport will follow up with the planning authority to ensure that those obstacles considered an unacceptable risk to aviation safety are not approved, or that those obstacles that are considered acceptable but subject to additional mitigations are appropriately marked and / or lit.

3.7.3.2 Actual OLS infringements

(Part 139 MOS – 7.18(1) (b); 7.19(2); 11.06(1) (d) (i))

Benalla Airport will not make a runway available for night use until CASA has determined that any obstacle(s) will not adversely affect the safety of night operations.

For any identified obstacles that have been erected without prior notification and which have not been assessed, the aerodrome reporting officer is to:

- advise ATC immediately (if applicable)
- consider limiting aircraft approach and take-off to the runway
- ensure an immediate request is made to issue a NOTAM
- take immediate steps to have the obstacle removed

- ascertain the height of the obstacle and consider displacing the runway approach threshold. If the threshold is displaced, the published declared distances will be amended, and the new threshold location appropriately marked / lit
- report the infringement to CASA in writing.

The NOTAM authorised person is to include the following information in the NOTAM request:

- the nature of the obstacle
- the distance and magnetic bearing of the obstacle from:
 - if the obstacle is within the take-off area – the start of the take-off end of the runway,
 - or
 - the ARP
- the height of the obstacle in relation to the aerodrome elevation
- if it is a temporary obstacle – the time during which it is a temporary obstacle.

The request to issue the NOTAM is to be made in accordance with the procedures set out in section 3.1 of this manual.

Once the obstacle has been removed, the aerodrome reporting officer is to:

- advise ATC (if applicable)
- re-open, or re-instate the full runway length (if required)
- ensure a request to cancel the NOTAM is made (if issued).

3.7.4 Height on infringements – OLS

(Part 139 MOS – 11.06(1) (c) (i))

There are no buildings, structures, plumes or other developments that infringe the aerodromes OLS; therefore, this subsection is NOT APPLICABLE.

3.7.4.1 Hazardous obstacles

(Part 139 MOS – 8.109(4); 8.110(1)-(8); 8.111(2) (a) (b))

CASA has not assessed any obstacles as being hazardous; therefore, this subsection is NOT APPLICABLE.

3.7.5 Monitoring visual segment surfaces and critical obstacles

(Part 139 MOS – 11.06(1) (a) (ii))

There are no published terminal instrument flight procedures for the aerodrome; therefore, this subsection is NOT APPLICABLE.

3.7.6 Proposed or actual infringements – PANS-OPS

(Part 139 MOS – 7.20(3); 11.06(1) (d) (ii) (2) (b))

There are no published terminal instrument flight procedures for the aerodrome; therefore, this subsection is NOT APPLICABLE.

3.7.7 Height of infringements – PANS-OPS

(Part 139 MOS – 11.06(1) (c) (ii))

The aerodrome does not have published terminal instrument flight procedures; therefore, this subsection is NOT APPLICABLE.

3.7.8 Obstacle control within aerodrome boundary

(Part 139 MOS – 11.06(1) (e))

Benalla Airport does not permit objects or structures, other than approved visual and navigational aids, to be erected within the obstacle restriction area of the aerodrome without the written approval of CASA.

All proposed fixed objects or structures at the aerodrome, whether temporary or permanent, that sit on or above the movement area, or those that extend above the defined height limits, including the OLS, have been and / or will be reported to CASA in writing.

On receipt of CASA's assessment, Benalla Airport adopts controls appropriate to the recommendations provided by CASA.

3.7.9 Obstacle control outside aerodrome boundary

(Part 139 MOS – 11.06(1) (f))

Benalla Airport has liaised with local government authorities located within the OLS footprint of the aerodrome and requested they forward development proposals for assessment where the proposal may penetrate the OLS or PANS-OPS of the aerodrome.

Assistance has been provided to ensure the local government authority has suitable processes and information to determine which development proposals should be forwarded for assessment.

3.7.10 Obstacle lights serviceability monitoring programme

(Part 139 MOS – 9.36(1) (3) (a))

There are no lit obstacles within the OLS area of the aerodrome; therefore, this subsection is NOT APPLICABLE. When temporary obstacles are required to be lit, they will be monitored in accordance with the MOS Part 139.

3.7.11 Obstacle light outage

(Part 139 MOS – 9.36(2) (3) (b))

There are no lit obstacles within the OLS area of the aerodrome; therefore, this subsection is NOT APPLICABLE. When temporary obstacles are required to be lit, they will be monitored in accordance with the MOS Part 139.

3.7.12 Charts published by the aerodrome operator

(Part 139 MOS – 11.06(1) (b))

3.7.12.1 Type A charts

(Part 139 MOS – 7.21)

Type A charts are not required and have not been prepared; therefore, this subsection is NOT APPLICABLE.

3.7.12.2 Type B charts

(Part 139 MOS – 7.22)

Type B charts have not been prepared; therefore, this subsection is NOT APPLICABLE.

3.7.12.3 Precision Approach Terrain Charts – ICAO

(Part 139 MOS – 7.23)

Precision Approach Terrain Charts have not been prepared; therefore, this subsection is NOT APPLICABLE.

3.7.12.4 Aerodrome Terrain and Obstacle Charts – ICAO (Electronic)

(Part 139 MOS – 7.24)

Aerodrome Terrain and Obstacle Charts have not been prepared; therefore, this subsection is NOT APPLICABLE.

3.8 Protection of communication, navigation, surveillance and meteorological facilities

3.8.1 Controlling activities near CNS and MET facilities

(Part 139 MOS – 11.16(a); 19.02)

There are no CNS or MET facilities located on the aerodrome; therefore, this subsection is NOT APPLICABLE.

3.8.2 Supply and installation of warning signs

(Part 139 MOS – 11.16(b); 19.06(5))

There are no communications, navigation and surveillance (CNS) or meteorological (MET) facilities located on the aerodrome; therefore, this subsection is NOT APPLICABLE.

3.9 Aerodrome technical inspections / manual validations

3.9.1 Inspection personnel

(Part 139 MOS – 11.10(2) (a)-(e))

The following is a list of individuals or positions, and their responsibilities in the aerodrome manual validation and reporting process:

Individual or position	Responsibilities
Aerodrome Manager	<ul style="list-style-type: none">▪ Managing the validation programme▪ Planning the validations▪ Receiving and considering validation reports
Airport Reporting Officer	<ul style="list-style-type: none">▪ Reporting the validation results and follow-up action▪ Taking follow-up action if defects or deficiencies have been identified

3.9.2 Inspection items and timeframes

(Part 139 MOS – 11.10(1) (a) (b); 12.09; 12.11(11))

Benalla Airport, in a financial year, has less than 10,000 air transport passenger movements and less than 20,000 aircraft movements.

An aerodrome manual validation is carried out in accordance with the following:

Validation requirement	Frequency	Required qualifications and / or experience
A check of approach, take-off and transitional surfaces to ensure published aerodrome information is accurate to within 0.05% of the published gradient in the AIP-ERSA.	This validation is completed annually.	<p>The person engaged to conduct the validation is:</p> <ul style="list-style-type: none"> ▪ Technically qualified or experience in surveying, or ▪ Has a sound knowledge and understanding of the standards for obstacle limitation surfaces, and ▪ Can, by appropriate means, validate the accuracy of the current published information in the AIP and have a sound knowledge and understanding of the standards for OLS
A check of the other surfaces associated with the OLS	This validation is completed annually.	<p>The person engaged to conduct the validation is:</p> <ul style="list-style-type: none"> ▪ Technically qualified or experience in surveying, or ▪ Has a sound knowledge and understanding of the standards for obstacle limitation surfaces, and ▪ Can, by appropriate means, validate the accuracy of the current published information in the AIP and have a sound knowledge and understanding of the standards for OLS
A check of the currency and accuracy of information published in the AIP	This validation is completed annually.	The person engaged to conduct the validation has sound knowledge and experience of the applicable civil aviation safety legislation.
A check of currency and accuracy of aerodrome operating procedures specified in the aerodrome manual and supporting documents	This validation is completed annually.	The person engaged to conduct validation has sound knowledge and experience of the applicable civil aviation safety legislation.
<p>A check that personnel appointed as a reporting officer:</p> <p>(a) Have been trained and assessed in accordance with Chapter 13, and</p> <p>(b) Appear to be generally competent to carry out the required duties in accordance with MOS</p>	This validation is completed annually.	The person engaged to conduct validation has sound knowledge and experience of the applicable civil aviation safety legislation.

Validation requirement	Frequency	Required qualifications and / or experience
<p>A check of that personnel appointed as a works safety officer:</p> <p>(a) Have been trained and assessed in accordance with Chapter 13, and</p> <p>(b) Appear to be generally competent to carry out the required duties in accordance with MOS</p>	<p>This validation is completed annually.</p>	<p>The person engaged to conduct validation has sound knowledge and experience of the applicable civil aviation safety legislation.</p>

3.9.3 Qualified personnel for technical inspections / manual validations

(Part 139 MOS – 11.10(1) (b); 12.10(3) (4); 12.11(13))

The Aerodrome Manager at the time of engaging a person to conduct each element of the aerodrome manual validation, is to sight the qualifications and relevant experience of each person(s) to verify that they meet the required qualifications and / or experience as documented in subsection 3.9.2 of this manual.

A person who cannot demonstrate that they have the required technical qualifications and experience, or demonstrable relevant technical experience, will not be permitted to perform the inspection.

A record of qualifications and relevant experience is retained in the report for the annual aerodrome manual validation.

3.9.4 Scheduling inspections / manual validations and recording their results

(Part 139 MOS – 11.10(1) (c))

A calendar is maintained to schedule manual validations.

- Person(s) responsible for calendar: Facilities Coordinator
- Location of calendar: Benalla Rural City Council records department SF/3703 DOC20/66749

To allow adequate planning time, a reminder is also set in the calendar three (3) months in advance of the due date.

The calendar is updated when an element of this manual validation is completed, and a new date for the next validation and a three-month advance reminder is set.

The calendar is reviewed monthly.

Irrespective of the schedule, an immediate validation is conducted in the event any of the following is detected during an aerodrome serviceability inspection:

- an unsafe condition is identified
- a defect or deficiency in a part of the aerodrome is identified
- incorrect aerodrome information published in the AIP, or a NOTAM, or reported to ATC (if applicable)
- any details in the aerodrome manual that are incorrect or not current
- any procedure in use at the aerodrome, which is not in accordance with, or conflicts with procedures in the aerodrome manual.

The results of each manual validation undertaken are presented in a report.

3.9.5 Briefing technical inspectors

(Part 139 MOS – 11.10(1) (d) (i) (ii); 12.08(4); 12.11(8))

At the time of engagement, the person(s) conducting the manual validation will be briefed on the scope of the validation.

The Aerodrome Manager is to advise the person(s) conducting each element of the validation that they are to include in their report:

- any non-compliance with the Part 139 MOS, including with respect to aerodrome personnel
- any incorrect aerodrome information:
 - published in the AIP or NOTAMs
 - reported to ATC (if applicable).
- any information in the aerodrome manual which is incorrect or not current
- any procedure, or practice in use at the aerodrome, which is not in accordance with, or conflicts with, procedures in the aerodrome manual.

3.9.6 Post-inspection / validation corrective actions

(Part 139 MOS – 11.10(1) (e); 12.08(4))

As soon as possible after the aerodrome manual validation has been completed, all errors or anomalies identified in the manual are to be corrected by Aerodrome Manager.

If necessary, consequential corrections to supporting procedures and to the aerodrome information published in the AIP are also to be made.

3.9.7 Providing CASA with inspection / validation reports

(Part 139 MOS – 11.10(1) (f); 12.08(7); 12.11(8))

Where the validation identifies incorrect information published in the AIP, NOTAM, or in the aerodrome manual, or any errors or conflicts with the procedures documented in the aerodrome manual, within 30 days of finalising the manual validation, a report is to be provided to CASA by Aerodrome Manager.

3.9.8 Maintaining records of technical inspections / manual validations

(Part 139 MOS – 12.08(9); 12.11(10))

Records of the results of each manual validation are retained for a period of at least three (3) years from the date the record was completed.

- Maintained by: Aerodrome Manager
- Stored securely at: Benalla Rural City Council records department SF/3703

3.10 Aerodrome works safety

(Part 139 MOS – 11.07)

Benalla Airport always makes all necessary arrangements to ensure that aerodrome works do not create a hazard to aircraft or cause confusion to pilots.

A Works Safety Officer is to be present to directly oversee works safety at all times when the aerodrome is open and available for aircraft operations.

Aerodrome markers, markings and lights required for, or affected by aerodrome works are installed, altered or removed in accordance with the required standards.

Any part of the movement area that is unserviceable as a result of aerodrome works being carried out are marked and lit. Obstacles created as a result of the aerodrome works are assessed and marked or lit in accordance with the assessment.

Where works are to be undertaken in the vicinity of CNS or MET facilities, the service provider is to be consulted to ensure neither the works, nor the vehicles or plant associated with the works affect performance of the facilities.

Where significant displacement of a runway threshold is planned, works planning may require consultations with the terminal instrument flight procedure (TIFP) designer and the surveyor that conducts the annual obstacle surveys.

3.10.1 Works safety personnel

(Part 139 MOS – 11.07(1) (2); 13.01)

The following persons have specified responsibilities for works:

Individual / position	Responsibility
Facilities Coordinator	<ul style="list-style-type: none">▪ Works planning▪ Conducting works▪ Arrangement and notifications.

The following is a list of personnel appointed to perform the functions of a Works Safety Officer (WSO):

Name	Position	Function
Greg Robertson	Aerodrome Manager	Works Safety Officer
Elise Wood	Facilities Coordinator	Works Safety Officer

All personnel appointed as a WSO have been trained so that they can competently carry out their duties at this aerodrome, without the need for supervision.

Benalla Airport ensures all training activities for works safety officers are recorded to verify achieved competencies.

All WSOs undergo recurrent training every two (2) to five (5) years as is recommended in guidance material published by CASA, or earlier if deficiencies are identified.

A training schedule has been established and is maintained by Facilities Coordinator. The training schedule is reviewed regularly to ensure training is completed in a timely manner.

The training records of all WSOs are:

- Maintained by: Facilities Coordinator
- Stored securely at: Benalla Rural City Council records department SF/3703 (doc20/42791)

3.10.2 Preparation of a method of working plan (MOWP)

(Part 139 MOS – 11.07(1) (a); Chapter 15; Chapter 16)

Although a MOWP is not required when planning scheduled works, as a means to ensure aerodrome works do not create a hazard or confusion, and that the impact of the works will be clearly understood, Benalla Airport is to consult with:

- operators based at the aerodrome
- emergency services aircraft that are likely to operate at the aerodrome
- any other key stakeholders.

A list of representatives from each operator / organisation listed above, and their contact details, is maintained by: Aerodrome Manager.

CASA is to be consulted should any safety issues be identified.

In the event Benalla Airport elects to develop a MOWP, the MOWP will be prepared in accordance with the content and sequencing requirements stated in Chapter 16 of the Part 139 MOS. SF/3703 (DOC20/66735)

The name, position, and function of each WSO will be recorded in the MOWP.

MOWPs will be authorised and signed by either the:

- Accountable Manager
- Project Manager that has written authorisation from the aerodrome operator to sign the MOWP.

Written authorisations will be retained on file SF/1785

3.10.3 MOWP Notifications

(Part 139 MOS – 11.07(1) (b); 15.02(3) (5); 16.10)

Unless the works are unforeseen urgent works, the authorised MOWP will be issued not less than 14 days before the works are scheduled to commence by the Aerodrome Manager.

The MOWP is to be issued to:

- air transport operators using the aerodrome
- operators of emergency services aircraft that are likely to operate at the aerodrome
- ATC (if applicable)
- ARFFS (if applicable)
- providers of any communications, navigation, surveillance or meteorological infrastructure or equipment that might be affected by the works (if applicable)
- the WSO
- the project manager
- the works organiser
- the aerodrome security manager
- CASA via e-mail at aerodromes@casa.gov.au

A distribution list of all MOWP recipients and their contact details is:

- Maintained by: Aerodrome Manager
- Stored securely at: Benalla Rural City Council records department SF/1785

The following person(s) is responsible for ensuring that all recipients receive the MOWP:

- Aerodrome Manager.

The MOWP distribution list will be regularly reviewed to ensure it remains current.

In the event a MOWP requires amendment, the amended MOWP will:

- clearly show the information that has changed
- be disseminated to all persons who received the original MOWP
- be issued no later than 48 hours before the change in works commences.

Amendments to the MOWP are the responsibility of: Aerodrome Manager.

A NOTAM providing the time and date of the commencement of the works is to be issued as early as possible, but not less than 48 hours before commencement.

In the event the change in works is due to an unforeseen event and a notification period of at least 48 hours is not possible, a NOTAM is to be requested as soon as possible after the change becomes known, and notification of the change is declared on the AFRU / or requested on the ATIS.

3.10.4 Communications with ATC during aerodrome works

(Part 139 MOS – 11.07(1) (c))

WSOs that hold an Aeronautical Radio Operator Certificate (AROC) are authorised to transmit on an aeronautical radio frequency. WSOs without an AROC are only authorised to listen to the aeronautical radio frequency, but not transmit.

WSOs will at all times maintain a continuous radio listening watch.

In the event the runway is unserviceable and the WSO does not hold an AROC, unserviceability markings will be used so that a pilot can clearly identify that the runway is unserviceable.

During CTAF operations, WSOs have the contact number for the operations centre for air traffic service to communicate unexpected changes to the availability of the aerodrome.

3.10.5 Time-limited works (TLW) or emergency works

(Part 139 MOS – 11.07(1) (d))

TLW are only to be carried out if:

- a Works Safety Officer(s) is present in the vicinity of the works
- normal operations are not disrupted
- the movement area can be restored to normal safety standards, and
- any obstacles created by those works removed in not more than 30 minutes.

At all times during TLW, the WSO is to maintain a continuous radio listening watch.

In the event TLW have been stopped to facilitate an aircraft movement, normal safety standards are to be restored not less than five (5) minutes before the aircraft movement is to occur.

Where TLW have been stopped for an aircraft movement, TLW is only permitted to resume:

- for an aircraft arrival:
 - immediately after the aircraft arrival provided the safety of the aircraft is not endangered
 - if the aircraft has not arrived, at least 30 minutes after the aircraft was due to arrive.
- for an aircraft departure:
 - a minimum period of 15 minutes must have elapsed between the aircraft's departure and the resumption of TLW.

3.10.6 Notifications of TLW or emergency works

TLW or emergency works with recall times between 10 and 30 minutes are to be advised by NOTAM.

For TLW, the works safety officer is to ensure that a NOTAM has been issued at least 24 hours before the works commence.

The request for a NOTAM is to be made in accordance with section 3.1 of this manual.

The NOTAM authorised person is to include the following information in the NOTAM request:

- date and time of commencement of the works
- time required to restore normal safety standards.

Emergency works on a runway, or runway strip are not to commence until ATC (local tower, or the air traffic service centre) have been notified and the publication of a NOTAM advising the changes to the aerodrome has been verified. The operations centre for air transport operators with scheduled services occurring during the expected duration of emergency works is also be advised of the changes occurring due to the works.

3.10.7 Works at closed aerodrome

(Part 139 MOS – 11.07(1) (f))

To enable works to be completed when the aerodrome is closed, written notice of the intention to close the aerodrome is to be sent, at least 14 days before the aerodrome closure, to:

- air transport operators using the aerodrome
- each other known organisation using the aerodrome which is likely to be affected by the closure
- CASA.

A distribution list of those receiving the written notification will be retained by: Aerodrome Manager.

A copy of the written notice will be retained by the Aerodrome Manager

At least 14 days before the aerodrome closure, a NOTAM will also be issued in accordance with section 3.1 of this manual, advising when the aerodrome will be temporarily closed.

3.11 Wildlife hazard management

3.11.1 Wildlife hazard personnel

(Part 139 MOS – 11.08(2))

The following individuals and positions have responsibilities for wildlife hazard management:

Individual / position	Responsibilities
Airport Reporting Officer	Monitoring wildlife hazards
Aerodrome Manager	Monitoring wildlife hazards

3.11.2 Training of personnel

3.11.2.1 Training for wildlife hazard monitoring and reporting

(Part 139 MOS – 17.07(1) (3))

At Benalla Airport, all personnel tasked with wildlife hazard monitoring and reporting are trained, so that they can competently:

- conduct wildlife observations and identify high-risk species
- assess wildlife populations and describe their behaviour
- record information
- collect any remains of a wildlife strike on the aerodrome
- attempt to facilitate the identification of
 - any wildlife involved in a strike event
 - any resulting damage to an aircraft
- report the outcomes of observations, monitoring and strike collection activities.

Re-currency training is completed every: Three years.

The training records of all personnel are kept for a minimum period of three (3) years and are:

- Maintained by: Aerodrome Manager
- Stored securely at: Benalla Rural City Council records department SF/4052

3.11.2.2 Training for wildlife hazard mitigation

(Part 139 MOS – 17.07(2) (a) (b) (3))

All personnel engaged in wildlife hazard mitigation are trained, so that they can competently:

- engage in active wildlife management without causing a hazard to aviation safety
- assess the effectiveness of any mitigation measures that are taken.

Re-currency training is completed every: As required by contractor's licence

3.11.3 Wildlife hazard management plan

(Part 139 MOS – 17.03; 17.04)

The type and frequency of aircraft operations does not trigger the requirement for a wildlife hazard management plan, nor does the aerodrome have a high wildlife hazard management risk. A wildlife hazard management plan has not been prepared.

3.11.4 Wildlife hazard monitoring

(Part 139 MOS – 11.08(1) (a); 17.01(3))

Wildlife hazards at Benalla Airport are monitored as part of the aerodrome serviceability inspection process as shown in section 3.2 of this manual.

In addition to an inspection of the aerodrome boundary fence, and gates, looking for holes or other potential signs of a breach by wildlife, reporting officers will identify and record the following:

- presence of wildlife on and in the vicinity of the aerodrome, which is to include:
 - a count of all birds and animals sighted
 - bird / animal activity, e.g. feeding, flying, nesting
 - species (if known)
 - numbers
 - location.
- seasonal and environmental conditions which may attract wildlife, such as grasses, standing water, uncovered waste, deceased wildlife (e.g. dead rabbits, mice etc.)
- any additional indicators such as new nests or eggs.

All wildlife observed on the aerodrome and in the vicinity of the aerodrome are recorded on the: Aerodrome Serviceability Checklist.

A Benalla Airport Wildlife strike report form is completed if an incident occurs, this form is stored securely at: Benalla Rural City Council records department SF/3863 (DOC20/53870).

A record of wildlife strikes is also included in the following register:

- Wildlife strike register: Benalla Airport – Airport Reporting Officer training and reports - wildlife strike register (DOC20/42791)
- Stored securely at: Benalla Rural City Council records department SF/4052

All known or suspected wildlife strikes that occur at or in the vicinity of the aerodrome are reported to the Australian Transport Safety Bureau (ATSB). Each month, the wildlife strike statistical reports published by the ATSB are reviewed by: Aerodrome Manager.

Any reported occurrences near the aerodrome not previously recorded are included in the Benalla Airport – Airport Reporting Officer Training and reports - wildlife strike register SF/4052 (DOC20/42791).

To detect changes in wildlife hazards, reported wildlife observations and the wildlife strike register are reviewed every month by: Airport Reporting Officer.

3.11.5 Wildlife hazard assessment

(Part 139 MOS – 11.08(1) (b); 17.02(1))

Any detected wildlife hazard is assessed for risk to aircraft operations.

The hazard assessment process is completed in accordance with the procedures set out in the aerodrome's Benalla Airport – Procedures for Airport Reporting Officer.

When assessing the risks, the following data is considered:

- wildlife observations
- reported strike events
- reported near miss events
- times of day or year / weather conditions.

Wildlife hazard risk assessments are:

- Maintained by: Aerodrome Manager
- Stored securely at: Benalla Rural City Council records department SF/4052.

3.11.6 Wildlife hazard mitigation

(Part 139 MOS – 11.08(1) (c))

The following measures have been implemented to assist in mitigating wildlife hazards:

- all gates are kept locked and rubbish appropriately stored
- grass heights are monitored to prevent seeding
- open unlined drains are regularly inspected and maintained to prevent water retention
- in the event dead birds and animal carcasses are located they are quickly removed.

In the event a reporting officer(s) detects a source of attraction for wildlife, so that further actions can be considered and implemented to minimise the attraction, a report is to be drafted and sent to: Aerodrome Manager.

Wildlife mitigation permit(s) is held at the required intervals and renewal is managed by: Aerodrome Manager.

Wildlife mitigation permits are stored securely at: Benalla Rural City Council records department Benalla Rural City Council records department SF/1785.

3.11.7 Wildlife hazard reporting (AIP, NOTAM, ATC, UNICOM)

(Part 139 MOS – 11.08(1) (d); 17.05(1))

In the event a wildlife risk is identified on or in the vicinity of the aerodrome, and the risk is a serious or imminent threat and cannot be immediately managed, the reporting officer(s) is to:

- notify ATC (if applicable)
- advise pilots via the CTAF / Unicom
- request the immediate issue of a NOTAM.

Known or seasonal hazards are reported in writing to the AIS provider for publication in the AIP-ERSA.

A NOTAM is requested if the hazard is a higher risk than usual, or is of a short term or seasonal nature.

3.11.8 Liaison with local authorities for wildlife hazard mitigation

(Part 139 MOS – 11.08(1) (e); 17.01(2))

The following is a list of local authorities that have land within a 13 km radius of the aerodrome:

Local authority	Contact
Department of Environment, Land, Water and Planning (DELWP)	PO Box 500 EAST MELBOURNE VIC 8002
Department of Health and Human Services (DHHS)	GPO Box 1670n MELBOURNE VIC 3001
Department of Education and Early Childhood	PO Box 403 BENALLA VIC 3671
Winton Wetlands Committee of Management	PO Box 219 BENALLA VIC 3671
North East Regional Water Authority (NERWA)	PO Box 863 WODONGA VIC 3689
Vic Roads North East Region	PO Box 135 BENALLA VIC 3671
Goulburn Murray Water	PO Box 165 TATURA VIC 3616

Benalla Airport engages with these local authorities to ensure that future land uses and development proposals can be carefully considered.

Where existing land use presents a potential risk, site visits are conducted to discuss aviation safety concerns and possible mitigations to reduce those risks. Regular site visits are conducted to ensure mitigations are effective. A record of these sites and the frequency of review is recorded in the table below:

Site	Site inspections
Benalla Lake	Yearly
Winton Wetlands	Yearly

3.12 Low-visibility operations (LVO)

Low-visibility operations are not conducted; therefore, this section is NOT APPLICABLE.

3.12.1 Low-visibility personnel

(Part 139 MOS – 11.17(1)(e)(i)(ii))

Low-visibility operations are not conducted; therefore, this subsection is NOT APPLICABLE.

3.12.1.1 Runway visibility (RV) assessment personnel

(Part 139 MOS – 23.08)

No persons at Benalla Airport are authorised to conduct runway visibility assessments.

3.12.2 Vehicular traffic in low-visibility operations

(Part 139 MOS – 11.17(1) (b))

Low-visibility operations are not conducted; therefore, this subsection is NOT APPLICABLE.

3.12.3 CNS facilities in low-visibility operations

(Part 139 MOS – 11.17(1) (c))

Low-visibility operations are not conducted; therefore, this subsection is NOT APPLICABLE.

3.12.4 Manoeuvring area inspections in low-visibility operations

(Part 139 MOS – 11.17(1) (d))

Low-visibility operations are not conducted; therefore, this subsection is NOT APPLICABLE.

3.12.5 Measuring runway visibility

(Part 139 MOS – 11.17(1) (a); 23.09(c) (iii) (IV))

Low-visibility operations are not conducted; therefore, this subsection is NOT APPLICABLE.

3.12.6 Communicating visibility measurements to ATC or pilots

(Part 139 MOS – 11.17(1) (a))

Low-visibility operations are not conducted; therefore, this subsection is NOT APPLICABLE.

3.12.7 Transmissometers

(Part 139 MOS – 11.17(2))

Transmissometers are not installed at Benalla Airport; therefore, this is NOT APPLICABLE.

3.12.8 Low-visibility procedures (LVP)

(Part 139 MOS – Chapter 23)

Low-visibility procedures (LVP) have not been established; therefore, this subsection is NOT APPLICABLE.

3.12.8.1 Specific circumstances for LVP

(Part 139 MOS – 23.02(c) (i))

Low-visibility procedures (LVP) have not been established; therefore, this subsection is NOT APPLICABLE.

3.12.8.2 Nominated rate of aerodrome movements

(Part 139 MOS – 23.02(c) (ii))

Low-visibility procedures (LVP) have not been established; therefore, this subsection is NOT APPLICABLE.

3.12.8.3 LVP-related training and authorisation for airside drivers

(Part 139 MOS – 23.02(c) (iii))

Low-visibility procedures (LVP) have not been established; therefore, this subsection is NOT APPLICABLE.

3.12.8.4 Control of airside operations

(Part 139 MOS – 23.02(c) (IV))

Low-visibility procedures (LVP) have not been established; therefore, this subsection is NOT APPLICABLE.

3.12.8.5 Withdrawal of non-essential vehicles and personnel

(Part 139 MOS – 23.02(c) (v))

Low-visibility procedures (LVP) have not been established; therefore, this subsection is NOT APPLICABLE.

3.12.8.6 Suspension of visual and non-visual aid maintenance

(Part 139 MOS – 23.02(c) (vi))

Low-visibility procedures (LVP) have not been established; therefore, this subsection is NOT APPLICABLE.

3.12.8.7 Securing airside access and preventing entry

(Part 139 MOS – 23.02(c) (vii))

Low-visibility procedures (LVP) have not been established; therefore, this subsection is NOT APPLICABLE.

3.12.8.8 Alerting of LVP

(Part 139 MOS – 23.02(c) (viii))

Low-visibility procedures (LVP) have not been established; therefore, this subsection is NOT APPLICABLE.

3.12.8.9 Coordinating LVP activities with ATC

(Part 139 MOS – 23.02(c) (ix))

Low-visibility procedures (LVP) have not been established; therefore, this subsection is NOT APPLICABLE.

3.12.8.10 Physical checks of lighting and warning devices

(Part 139 MOS – 23.02(c) (x))

Low-visibility procedures (LVP) have not been established; therefore, this subsection is NOT APPLICABLE.

3.12.8.11 Protection of areas to ILS

(Part 139 MOS – 23.02(c) (xi))

Low-visibility procedures (LVP) have not been established; therefore, this subsection is NOT APPLICABLE.

3.12.8.12 Emergency responses during LVP

(Part 139 MOS – 23.02(c) (xii))

Low-visibility procedures (LVP) have not been established; therefore, this subsection is NOT APPLICABLE.

3.12.8.13 LVP status

(Part 139 MOS – 23.02(c) (xiii))

Low-visibility procedures (LVP) have not been established; therefore, this subsection is NOT APPLICABLE.

3.12.8.14 Review of low-visibility procedures

(Part 139 MOS – 23.04)

Low-visibility procedures (LVP) have not been established; therefore, this subsection is NOT APPLICABLE.

3.13 Disabled aircraft removal

3.13.1 Aircraft removal personnel

(Part 139 MOS – 11.13(e)(i)(ii))

The following person(s) have responsibilities for arranging the removal of disabled aircraft:

Name	Role	Phone number	After hours phone number
Greg Robertson	Aerodrome Manager	03 5760 2600	03 5760 2600

3.13.2 Aircraft removal – aerodrome operator and aircraft certificate holder

(Part 139 MOS – 11.13(a))

The registered owner or aircraft operator has complete responsibility for removing their aircraft should it become disabled. All airline operators are therefore expected to have aircraft recovery plans which identify any special equipment that may be necessary.

Benalla Airport coordinates the aircraft recovery operation to ensure that the disabled aircraft is removed in a timely and efficient manner.

Removal of damaged aircraft may be subject to clearance of Australian Transport Safety Bureau and other investigating teams.

Although the aircraft owner is responsible, Benalla Airport may, where necessary, initiate salvage action when:

- there is a serious and imminent threat or hazard to other aircraft, vehicles or personnel on the movement area
- the aircraft operator refuses to move a disabled aircraft, or neglects to do so within a reasonable time.

In these instances, Benalla Airport accepts no responsibility for any loss or damage of any kind resulting from this action, and the aircraft operator shall be held responsible for all costs incurred.

Once a runway is negatively impacted (unavailable), or a reduction in operating length is required, a NOTAM is to be issued in accordance with section 3.1 of this manual.

Appropriate visual aids are deployed, when necessary, to mark unserviceable portions of the aircraft movement area by Airport Reporting Officer.

3.13.3 Notifying aircraft certificate holder

(Part 139 MOS – 11.13(b))

The pilot of a disabled aircraft is expected to notify the holder of the aircraft's certificate of registration in the first instance.

If the pilot is not available or is unable to notify the certificate of registration holder, the required notification is to be issued by Aerodrome Manager.

If the certificate of registration is not known to Benalla Airport, details are to be obtained from the pilot, if possible, or if available, from the CASA website via:

<https://www.casa.gov.au/aircraft/civil-aircraft-register>

3.13.4 Liaising with the ATSB, Defence and ATC

(Part 139 MOS – 11.13(c))

If the disabled aircraft cannot be immediately removed from the movement area, Benalla Airport will ensure:

- unserviceability markers, markings and lights are displayed as required
- the NOF is notified of the unserviceability, or changes to the runway or taxiway as applicable.

In the absence of a representative from Benalla Airport, the pilot is expected to advise air traffic services of the disabled aircraft closing the runway or airport. As there is no Air Traffic Control at Benalla Airport, this notification is expected to occur on the general area frequency should VHF be available on the ground. Once a representative from Benalla Airport becomes aware of the disabled aircraft, they are to confirm with the pilot that the air traffic services have been notified.

The ATSB will be notified immediately of an occurrence that requires their involvement.

3.13.5 Equipment and person(s) to remove aircraft

(Part 139 MOS – 11.13(d))

The holder of the aircraft's certificate of registration is expected to provide, by the fastest means possible, any specialised equipment and personnel required to remove a disabled aircraft.

Prior to engaging recovery assistance from Benalla Airport, the aircraft operator is required to indemnify Benalla Airport from any adverse consequence resulting from any activities during the recovery process.

Benalla Airport is to advise the aircraft operator of the contacts of any commercial crane operators that may assist in providing equipment for the removal of disabled aircraft.

3.14 Aerodrome safety management

3.14.1 Safety management system (SMS)

(Part 139 MOS – 11.09(1); 25.02; 25.03; 25.04)

As the aerodrome has less than 50,000 air transport passenger movements / less than 100,000 aircraft movements in a financial year, a safety management system has not been prepared or implemented.

3.14.2 Risk management plan

(Part 139 MOS – 11.09(2); Chapter 26)

As the aerodrome has less than 25,000 air transport passenger movements / less than 20,000 aircraft movements in a financial year, a risk management plan has not been prepared or implemented.

4 Aerodrome Emergency Response

4.1 Emergency response personnel

(Part 139 MOS – 11.12(2) (a)-(e))

Individual / position	Responsibilities
Aerodrome Manager	<ul style="list-style-type: none">▪ Maintaining aerodrome emergency response procedures.▪ Notifying procedures to initiate an emergency response.
Facilities Coordinator	Initiating emergency response actions by aerodrome personnel.
Airport Reporting Officer	Returning the aerodrome to operational status after an emergency.
Emergency Management Coordinator	Monitoring the function of the aerodrome response plan in local emergency planning arrangements.

4.2 Aerodrome emergency response

(Part 139 MOS – 11.12; Chapter 24)

4.2.1 Aerodrome emergency plan (AEP)

(Part 139 MOS – Chapter 24)

The type and frequency of aircraft operations at Benalla Airport does not trigger the requirement for an aerodrome emergency plan; therefore, this subsection is NOT APPLICABLE.

4.2.2 Local / state emergency response plan

(Part 139 MOS – Chapter 24)

The aerodrome has emergency response arrangements that meet the requirements of section 24.03 of the Part 139 MOS and are represented in the local / state emergency response plan.

These emergency response arrangements are:

- Maintained by: Aerodrome Manager
- Available at: Benalla Rural City Council

4.3 Aerodrome emergency procedures

4.3.1 Aerodrome emergency committee

(Part 139 MOS – 11.12(1) (a) (i))

The type and frequency of aircraft operations at Benalla Airport does not trigger the requirement for an aerodrome emergency committee. An aerodrome emergency committee has not been established.

4.3.2 Emergency services organisations

(Part 139 MOS – 11.12(1) (a) (ii))

Descriptions of the roles of each emergency service organisation involved in the Benalla Airport emergency response arrangements are recorded in the table below:

Emergency service organisation	Role description
Victoria Police	Upon arrival, assume overall control and coordinate the agency's responding to the emergency and represent the Coroner.
Country Fire Brigade	Take charge of the firefighting operations and assist command post as required.
Ambulance Victoria	Treat casualties as required, provide first aid and assist command post as required.
Benalla Health	Prepare to receive and treat casualties as they arrive.
State Emergency Service	Assist with rescue operations and assist command post as required.

4.3.3 Local emergency planning arrangements

(Part 139 MOS – 11.12(1) (a) (iii))

To ensure a coordinated response, the following procedures are followed when liaising with authorised person(s) responsible for local emergency planning arrangements:

Any person on observing or being notified of an aircraft crash or an expected abnormal landing shall immediately render assistance and advise the Police.

The police shall co-ordinate the response.

On receiving advice of an aircraft crash or crash alert, obtain the following details:

- Location of aircraft
- Number of persons on board
- Aircraft type

- Aircraft registration
- Aircraft company.

- 1) Contact the Ambulance, Hospital, Fire Brigade State Emergency Service and the Council.
- 2) Dispatch officers to the scene of the emergency, on arrival, and if applicable, when the aircraft has stopped, isolate the site. Once the fire fighting units are in position, set up a co-ordination point, activate flashing blue lights to establish the visual and physical position of the command post.
- 3) Except for fire fighting and rescue, take charge of all operations. Be the co-ordinator solely responsible for actions at the crash scene, admitting only essential fire fighting and rescue personnel, equipment, and the ambulance.
- 4) Obtain relevant details such as location, number of people involved, and the severity of the accident. Ensure all persons on the aircraft are accounted for. Direct walking survivors to the assembly area set-aside for victims support care.

Ensure that the assembly area is located at least 100 metres from and, preferably upwind from the emergency site.

- 5) Isolate in case of fire, the crash scene until declared safe by the Fire Brigade. When the scene is safe, restrict entry only to essential persons and equipment. Generally control, supervise and ensure free movement of emergency service vehicles to enter, and assemble to provide appropriate support in the emergency area.
- 6) Notify the Air Traffic Services Centre (ATSC) Melbourne and:
 - Provide all available information, concerning the accident for forwarding to ATSB; and
 - If aircraft details are not known, seek ATS assistance in determining which aircraft is likely to be involved and the number of people on board.
- 7) If the crash is on or near the aerodrome notify the Council:
 - Aerodrome Manager, and if unavailable; the
 - ARO, the ARO will notify the ATSC too wholly or partially close the aerodrome.
- 8) If a passenger aircraft is involved notify the airline or their agent, and seek details such as aircraft type and the number of persons on board.
- 9) Check the aircraft for dangerous cargo and arrange for removal, take charge of all the aircraft papers and guard the wreckage until released by ATSB.
- 10) Remain at the assembly area; control spectator and media access to an area away from the scene of the crash. Issue press and media releases.
- 11) Arrange guard duty at the site of the crash. To assist the ATSB investigators, save and protect evidence, including impact marks on the ground, and other indicators such as debris. The exact location of victims marked, and a photographic record made of the scene, before any

wreckage is disturbed.

12) Control the media.

4.3.4 Notification and initiation of emergency response

(Part 139 MOS – 11.12(1) (a) (iv); 24.04)

Notification of an emergency will be made without delay.

To ensure agencies respond appropriately, it is important that all information known about the emergency is relayed as accurately as possible. The following information is to be relayed as applicable:

- exact location of the incident (including location details and map references etc.)
- nature of the incident
- type of aircraft
- estimated time of arrival of the aircraft involved and the runway to be used (if applicable)
- number of persons on board (including passengers and crew)
- presence of hazardous materials including dangerous goods
- any other relevant information.

To assist responding emergency agencies, location details and / or maps of the aerodrome and its immediate vicinity have been provided. The location details and / or maps show:

- primary and secondary access points
- emergency assembly areas
- aerodrome hazards.

The location details and / or maps are available at: Benalla Rural City Council records department and Airport Report Office.

4.3.5 Activation, control and coordinator of emergency responders

(Part 139 MOS – 11.12(1) (a) (v))

Benalla Airport does not have any aerodrome-based emergency responders; therefore, this subsection is NOT APPLICABLE.

4.3.6 Aerodrome emergency facilities

(Part 139 MOS – 11.12(1) (a) (vi))

Benalla Airport does not have emergency facilities available; therefore, this subsection is NOT APPLICABLE.

4.3.7 Access and management of assembly areas

(Part 139 MOS – 11.12(1) (a) (vii))

The procedures for access and the management of assembly areas are described below:

The only access to the Benalla Airport is via the locked gates located at the apron area. Any emergency vehicle or personnel requiring access into airport must key into the keypad, located at gate, the following four digit number (followed by the hash) **3782#**. An Emergency Crash gate is located to the south of the locked gates if required.

Management of the assembly area will be controlled by Victoria Police with assistance from Benalla Rural City Council.

4.3.8 Response to a local stand-by event

(Part 139 MOS – 11.12(1) (a) (viii))

The procedures to respond to a local stand-by event are described below:

The best understanding of the local stand by event is achieved through taking part in the planning process and to observe the most workable procedures. The Council seeks the maximum involvement of responding agencies in the Municipal Emergency Management Plan by their endorsement of the procedures so developed.

4.3.9 Initial response to full emergency

(Part 139 MOS – 11.12(1) (a) (ix))

The procedures to respond to a full emergency at, or in the immediate vicinity of the aerodrome, are described below:

The police, ambulance, fire brigade, hospital, emergency service, and ATSB, are all part of the initial response. All organisations will be contacted immediately as per requirements of the Municipal Emergency Management Plan.

4.4 Readiness of emergency facilities, access points and assembly areas

(Part 139 MOS – 11.12(1) (b))

The arrangements for keeping aerodrome emergency facilities, access points and assembly areas (if any) in a state of readiness are described below:

Equipment used and supplied by the participating emergency services is tested in accordance with the requirements of that particular body.

All Benalla Airport access points and assembly areas are reviewed twice weekly as part of the Airport Reporting Officers duties.

All emergency equipment located at the Benalla Airport is tested in accordance with Australian Standards.

4.5 Emergency responder preparedness

(Part 139 MOS – 11.12(1) (c))

4.5.1 Site inductions for emergency responders

(Part 139 MOS – 11.12(1) (c) (i))

To ensure local emergency responders are familiar with the aerodrome and the immediate surrounds, familiarisation tours are conducted.

During these tours, emergency responders are:

- shown the location and operation of:
 - aerodrome access points (including routes to get to the access points)
 - aerodrome assembly areas
 - aerodrome emergency facilities and equipment.
- made aware of hazardous storage facilities and materials at the aerodrome
- made aware of procedures to be followed when responding to an incident, including airside driving hazards.

4.5.2 Emergency response training

(Part 139 MOS – 11.12(1) (c) (ii))

The aerodrome does not have an AEP; therefore, this subsection is NOT APPLICABLE.

4.5.3 Emergency exercises

(Part 139 MOS – 11.12(1) (c) (iii))

The aerodrome does not have an AEP; therefore, this subsection is NOT APPLICABLE.

4.6 Post-emergency return to normal operations

(Part 139 MOS – 11.12(1) (d))

Aircraft operations will only be resumed when:

- circumstances permit aircraft to operate safely
- the airport movement area is secured
- there is no interference to emergency response activities
- all stakeholders are aware that the emergency response has been formally stood down, or a plan has been established to recommence operations while phases of the emergency response have not been finalised.

If the aerodrome has been closed due to the occurrence of an emergency, normal aircraft operations are not to resume until there are adequate aerodrome personnel available to support the resumption of operations, and trained aerodrome personnel have:

- conducted an inspection of the movement area making sure that the runway and taxiway surfaces are free of hazards that may cause damage to aircraft
- provided confirmation that the movement area is serviceable and safe to resume normal aircraft operations
- ensured that areas which remain closed are suitably marked and lit to distinguish their unserviceability
- completed an assessment that any operational equipment on or near the aerodrome as part of the emergency response does not infringe the prescribed airspace (OLS or PANS-OPS)
- if a displaced threshold is required, all components of the OLS will be assessed based on the displaced threshold location
- ensured the accuracy of information published in NOTAM.

Where the emergency is confined, operations are only able to resume under restricted conditions. Benalla Rural City Council ensures all hazards are identified and appropriately assessed prior to the commencement of restricted operations. In completing this assessment and to ensure the ongoing integrity of CNS and MET equipment, communication navigation and surveillance systems specialists are consulted by: Aerodrome Manager.

The ATSB is to be consulted as they may require the preservation of evidence which may affect the return of part, or all of the movement area, to service.

4.7 Reviews of aerodrome emergency plan (AEP)

(Part 139 MOS – 11.12(1) (e); 24.05(2))

The aerodrome does not have an AEP; therefore, this subsection is NOT APPLICABLE.

4.8 Monitoring local emergency planning arrangements

(Part 139 MOS – 11.12(1) (e))

Procedures pertaining to the function of the aerodrome in local emergency planning arrangements are to be reviewed with local emergency responders at least once every two (2) years. Documented evidence of each review is:

- Retained by: Emergency Management Coordinator
- Stored securely at: Benalla Rural City Council records department SF/704

5 Aerodrome Lease of Land for Hay Production

5.1 Benalla Airport Cropping Lease

5.1.1 Introduction

Any works carried out within the movement area of an active runway are a source of potential hazard to aviation safety. While ideally, aerodromes should be closed to aircraft operations when aerodrome hay production works are carried out: this is often not practicable. Aerodrome hay production works may be carried out without closure of the aerodrome provided safety precautions are adhered to.

5.1.2 Site inductions for hay production staff

All person who lease, or contract to the lease, or conduct any associated works need to be inducted and trained by ARO before commencing Hay production works at Benalla Airport. Works need to be planned and executed in accordance with standard procedures to ensure that all the parties that may be affected by the works (airlines, air traffic services, works organisations etc.) are given adequate detail and notice of the works, so that all the affected individuals and organisations know what to expect and how to respond to changing environment during the hay production period.

5.1.3 Hay production obstacle limitations

All person who lease, or contract to the lease, or conduct any associated works are familiar with the Obstacle limitations slopes Appendix 1.2.

5.1.4 Maintaining records

Records associated with Benalla Airport lease of land for hay production are retained for a period of at least three (3) years from the date the record was completed.

- Maintained by: Parks Coordinator
- Stored securely at: Benalla Rural City Council records department CM16.037
- Appendix 1.3

Appendix 1

1.1 *Benalla Aerodrome*

Records Management: DOC20/81196

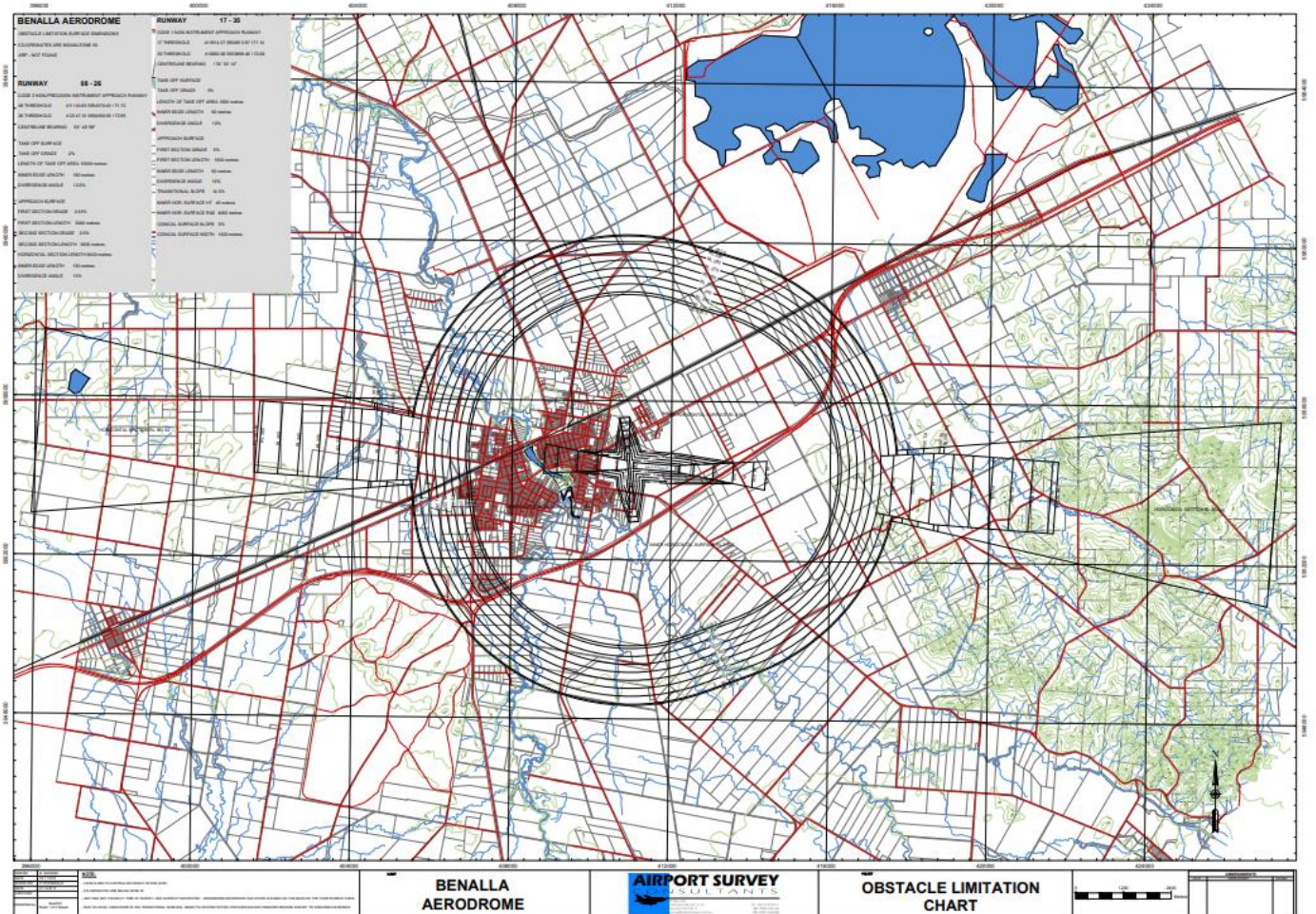
s

Under Review by CASA

1.2 Benalla Aerodrome Obstacle Limitation Surfaces

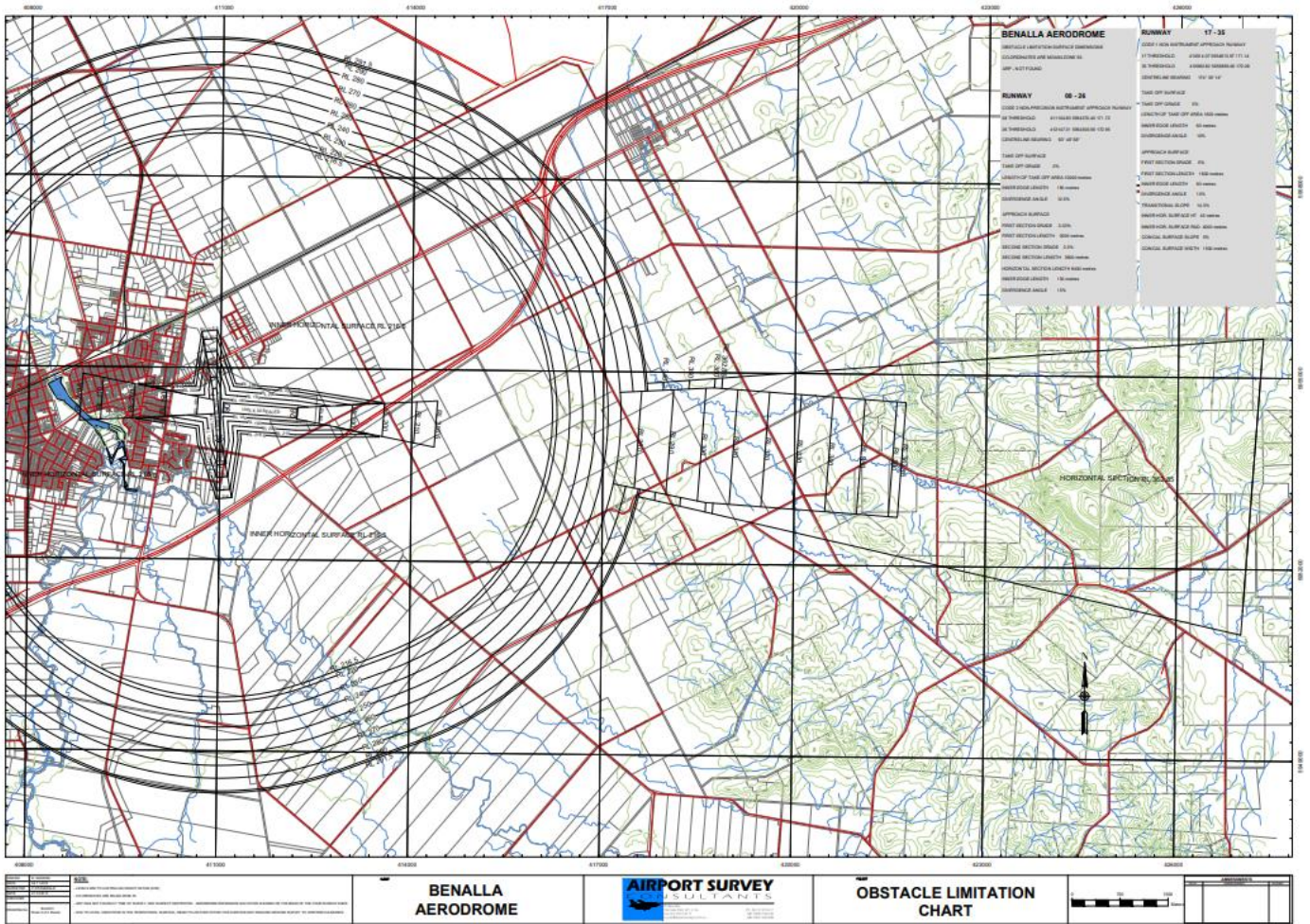
1.2.1 Obstacle limitation surfaces chart overall

Records Management: DOC20/58163



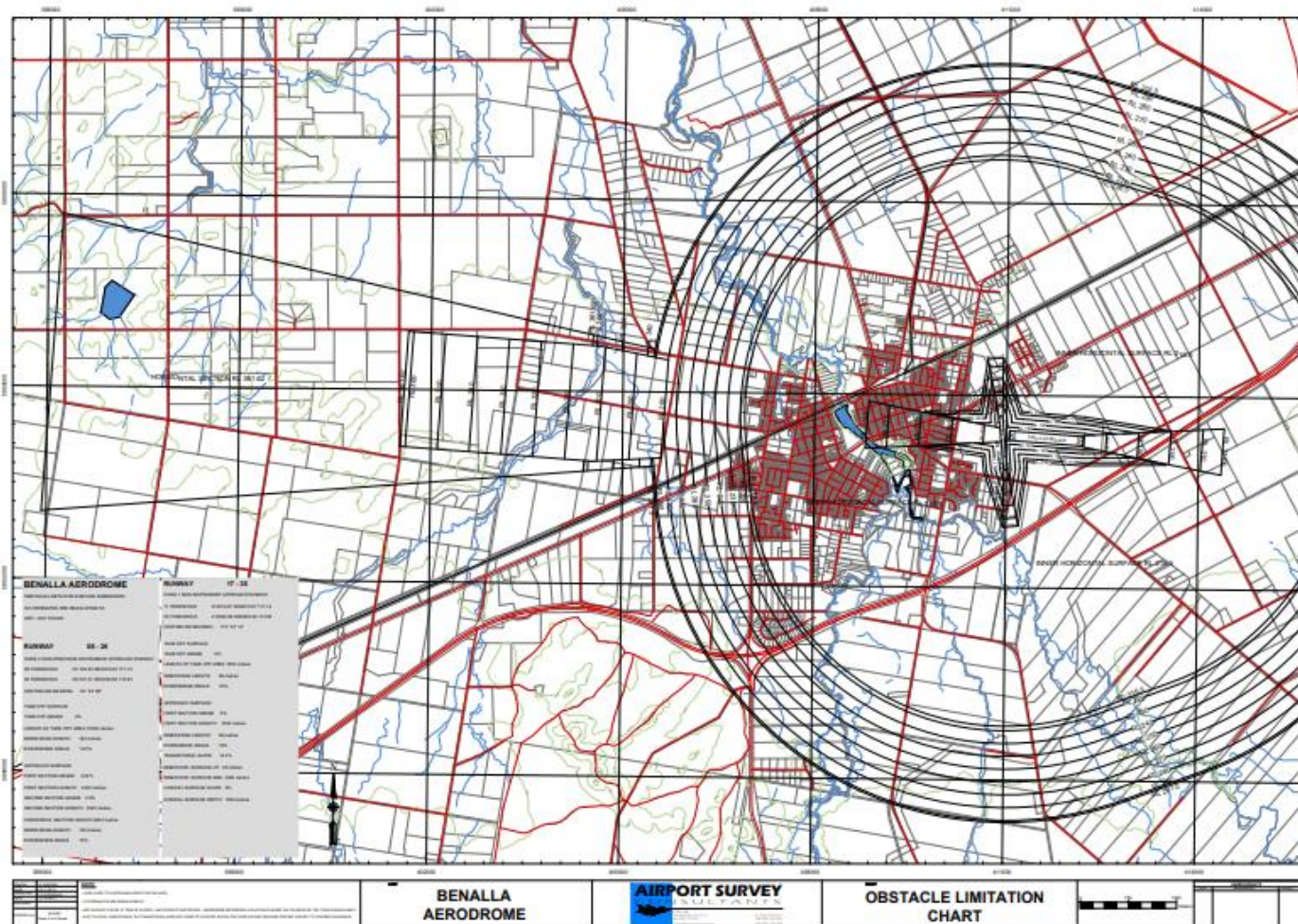
1.2.2 Obstacle limitation surfaces chart east

Records Management: DOC20/58166



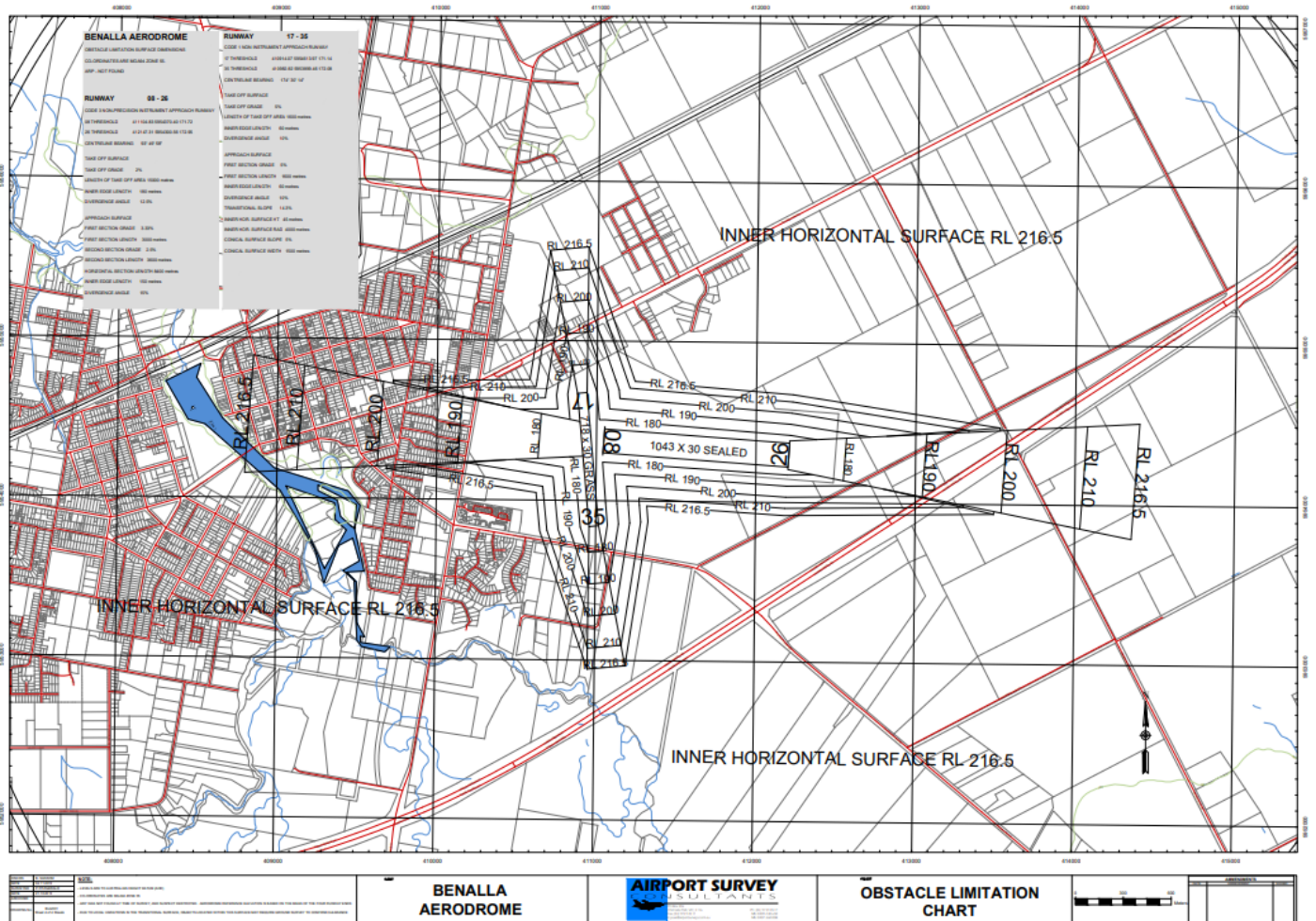
1.2.3 Obstacle limitation surfaces chart west

Records Management: DOC20/58164



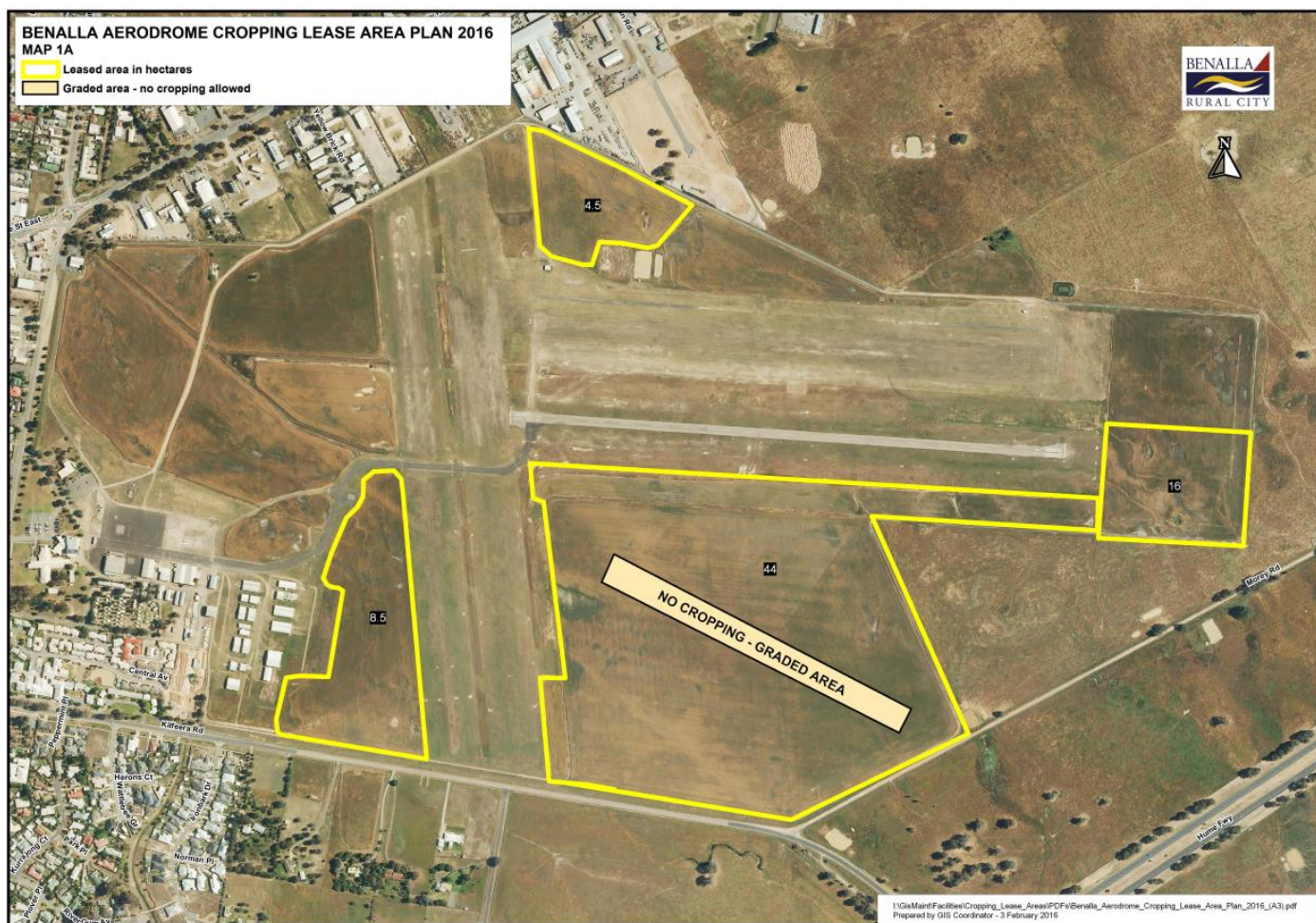
1.2.4 Obstacle limitation surfaces chart inner horizontal surfaces

Records Management: DOC20/58167



1.3 Benalla Aerodrome Plan Cropping Lease Areas

Records Management: DOC20/58198



and DOC20/58199



Appendix 2

2.1 Aerodrome Serviceability Inspection Checklist (DOC19/29344)

A vehicle with an amber rotating beacon light on top is used when conducting the aerodrome serviceability inspection on the movement area. The ARO, as much as possible, will work towards the direction of aircraft approach during inspections, to facilitate visual contact with aircraft.

BENALLA AERODROME - REPORTING OFFICER'S LOGBOOK

Name of Reporting Officer

Date Time

PASS ATTENTION PASS ATTENTION

RUNWAY

Debris PASS ATTENTION

Markings and markers PASS ATTENTION

Pavement condition PASS ATTENTION

RUNWAY STRIP

Undue roughness PASS ATTENTION

Obstructions PASS ATTENTION

Grass height (obscuring gables & lights) PASS ATTENTION

Gable markers PASS ATTENTION

TAXIWAY/TAXIWAY STRIP

Debris PASS ATTENTION

Pavement Condition PASS ATTENTION

Shoulder erosion PASS ATTENTION

Markings and markers PASS ATTENTION

APRON

Debris PASS ATTENTION

Petrol or oil spillage's PASS ATTENTION

Pavement deterioration PASS ATTENTION

Markings and markers PASS ATTENTION

LIGHTS

at this inspection

Lights PAL test frequency 123.4 PASS ATTENTION

Durat. 30 min.= 20 min. + 10 flash. PASS ATTENTION

Lights **Runway** 20 edge 12 end (85% of lights must be operational) PASS ATTENTION

Lights **Taxiway** total 36 (85 % of lights must be operational) PASS ATTENTION

Lights **Runway holding** total 3 (85 % of lights must be operational) PASS ATTENTION

FENCING

Security, indications of unauthorized entry PASS ATTENTION

Signs (unauthorized entry displayed) PASS ATTENTION

Gates Locked PASS ATTENTION

Emergency gate unobstructed PASS ATTENTION

WIND INDICATORS

Condition, swinging freely PASS ATTENTION

Lighting (IWI total 8) PASS ATTENTION

Spare Windsock available PASS ATTENTION

DRAINAGE

Silting or vegetation in open drains PASS ATTENTION

Water ponding PASS ATTENTION

Blockages PASS ATTENTION

HAZARDS

Birds PASS ATTENTION

Refueling operations PASS ATTENTION

OBSTACLE LIMITATIONS SURFACE

Approach surfaces clear PASS ATTENTION

Transitional surfaces clear PASS ATTENTION

Testing not required

ENTRANCE ROAD

Road surface condition PASS ATTENTION

NOTAMS

Until published **Yes** **No**

Current **Yes** **No**

Detailed comments:

2.2 Benalla Airport Lighting and Equipment Inventory Checklist (DOC20/53866)

RUNWAY 08R/26L

Runway Edge	20x	Elevated Fittings	Clear Lens
Runway Threshold red/green	8x	Elevated Fittings	Green/red Lens
Runway Threshold Green	4x	Elevated Fittings	Green Lens
Taxiway	38x	Flush Mounted Fittings	Blue Lens
Taxiway Holding Point	3x	Flush Mounted Fittings	Yellow Lens
Isolating Transformer	20x	Y9/1522 – (R/W)	
	12x	Y9/1523 threshold	
	41x	Y9/1859 (taxiway)	

Obstruction lights on primary illuminated wind indicator and PAL tower.

BENALLA AIRPORT LIGHTING SPARES HOLDING LIST

ITEM	INDENT	MIN NO
TAXIWAY:		
Lamps	J1/74	10
Lampholders	V7/1501	10
Clear Lens Cover	V7/186	3
Lens Gasket	V7/183	3
Filter - Lens	V7/173	3
08R/26L RUNWAY		
Lamps (25W) – edge lights	V1/2H	6
Lamps (48W) – threshold lights	V1/300	10
Lens - green	PALGREENLENS	2
Lens – red/green	PALRGLENMOS	2
Plastic body complete with clear lens, green lens or red/green lens		2 or each type
Gasket and nut	PALG6.35RGMOS	3
	PALG6.35GREEN	3
ILLUMINATED WINDSOCK		
Lamps 120Watt	V1/393	8
Gables – Orange / White		5 of each colour
Cones Large Yellow. Red/White, White		10 or each colour
Small cones – White		10
Drain Lids (Concrete)		15
Large pegs for gables & cones		30
Windsock Primary (white)		1
Windsock Secondary (yellow)		1

Airport Lighting Specialist can supply spares

Comments: _____

Airport Reporting Officer: _____ Date: / / 20.....

2.3 Benalla Airport Lighting and Electrical Reticulation Inspection (DOC20/80927)

Inspection Stage	Items Inspected	Comments
Visual aids on the movement area	<ul style="list-style-type: none"> ▪ Glass ware and reflectors - examine and clean especially during lamp replacement; ▪ Terminations and wiring - observe condition; ▪ Control equipment - inspect and test; and ▪ General - check condition of fittings, paintwork etc. 	
Apron Floodlighting, including illumination of the apron and parking position	<ul style="list-style-type: none"> ▪ Glass ware and reflectors - examine and clean especially during lamp replacement; ▪ Terminations and wiring - observe condition; ▪ Control equipment - inspect and test; and ▪ General - check condition of fittings, paintwork etc. 	
Illuminated wind direction indicators	<ul style="list-style-type: none"> ▪ Fittings - inspect lamp holder at lamp replacement; ▪ Insulation - measure insulation resistance of fittings and cable; ▪ Terminations and wiring - observe condition; and ▪ General - check condition of windsock bearings, paintwork etc. 	
Pilot activated light system	<ul style="list-style-type: none"> ▪ Location ▪ PAL frequency ▪ PAL activates normally ▪ Cycle Time ▪ TMTOL Time ▪ Operates after main failures ▪ Turn the runway light switch to test ▪ Press the insulation test switch on, record the test result, is it acceptable ▪ If the insulation test is in yellow or red detail maintenance action taken 	

Inspection Stage	Items Inspected	Comments
Obstacle lights and beacons maintained by the aerodrome operator		
Any earthing points on the apron (if applicable)		
Switchboard and Selector Panel	<ul style="list-style-type: none"> ▪ Contactors – observe operation inspect for signs of burning and pitting ▪ Relays – check operation ▪ Indicators – check operation ▪ Termination and wiring – observe condition ▪ Earthing – test main and equipment earthing ▪ Fuses – check condition and amperage ▪ Instruments – check operation and zero settings 	
Underground Cables	<ul style="list-style-type: none"> ▪ Insulation – measure insulation of circuits ▪ Terminations and wiring – observe conditions 	

Comments:

.....

.....

.....

.....

.....

Electrical Contractor: _____ Date: / /

2.4 Benalla Airport Monitoring and Enforcement Traffic (DOC20/65186)

CONSIDER THE FOLLOWING	Yes	No	Comments / Action
Separation			
Are separate entries and exits provided for vehicles and pedestrians?			
Do the entries and exits protect pedestrians from being struck by vehicles?			
Does the layout of the airport effectively separate pedestrians, vehicles and aircraft?			
Are vehicle entry points sufficient to meet the demands of the airport?			
Vehicle routes			
Are the roads within the airport suitable for the types and volumes of traffic?			
Are traffic directions clearly marked and visible?			
Are vehicle routes wide enough to separate vehicles and pedestrians and for the largest vehicle using them?			
Do vehicle routes have firm and even surfaces?			
Are vehicle routes kept clear from obstructions and other hazards?			
Are vehicle routes well maintained?			
Do vehicle routes avoid sharp or blind corners?			
Vehicle movement			
Are vehicles slowed to safe speeds, for example speed limiters on mobile plant or chicanes on vehicle routes?			
Do drivers use the correct routes, drive within the speed limit and follow site rules?			
Signs			
Are there speed limit signs?			
Is there enough lighting to ensure signs are visible, particularly at night?			
Warning devices			
Are roof mounted flashing lights installed on all vehicles and are they operational?			
Information, training and supervision			

CONSIDER THE FOLLOWING	Yes	No	Comments / Action
Do powered mobile plant operators have relevant high risk work licences? Are they trained in operating the particular model of plant being used?			
Have workers received site specific training and information on airport traffic hazards, speed limits, parking and loading areas?			
Is information and instruction about safe movement around the airport provided to visitors and external drivers?			
Is the level of supervision sufficient to check traffic movement and ensure safety of pedestrians and drivers?			
Personal Protective Equipment			
Is PPE like high visibility clothing worn by all people airside at the Airport.			
Vehicle safety			
Have vehicles and powered mobile plant been selected which are suitable for the tasks to be done?			
Do vehicles have direct visibility or devices for improving vision like external and side mirrors and reversing sensors?			
Are UHF radios on and set to CTAF 125.6 for listening to airport movement?			
Are drivers suitable trained in the use of the radio?			
Reporting and enforcement			
Visually monitor speed, driving style and movement around parked aircraft while the driver is active at Benalla Airport. Does it comply with Benalla Airport requirements? (If no please indicate how they are not complying and if possible obtain vehicle registration details.eg Take a photo of registration plates)			
Benalla Rural City Council Authorised Officer to review any physical evidence presented and discuss with the Airport Reporting Officer evidence witnessed and complete Witness Statement DOC18/19580			
Regulatory Compliance and Enforcement for breaches of an Act, Regulation or Bi-Laws will be actioned by a Benalla Rural City Council Authorised Officer.			
All reporting and enforcement documents to be recorded and saved in SF/3863.			

2.5 Benalla Airport Manual Inspections Calendar Reminders (DOC20/66749)

Facility Inspection	Airport CASA requirements - twice a week ARO inspections inc. light operations once a week
March 20	Fire
April 20	Review Aeronautical data and set calendar reminder for Airport Manual Review
May 20	PAL 12m inspection
June 20	ARO training review
July 20	Review Airport Manual
August 20	OLS Survey
September 20	Fire
October 20	
November 20	PAL 6m inspection

2.6 Benalla Airport Technical Inspection Report (DOC20/80929)

Inspection date:

Inspector:

Review Part 139 Manual of Standards 2019 Chapter 12 Division 2 for conditions.

Inspection Stage	Items Inspected	Comments
1. Movement area pavements	<ul style="list-style-type: none"> ▪ Pavement surface condition of: ▪ Runway 08/26 (sealed) ▪ Runway 17/35 (grass) ▪ Taxiway (sealed) ▪ Apron (sealed) ▪ Including contamination including rubber build up 	
2. Movement area drainage	<ul style="list-style-type: none"> ▪ Runway surface ▪ Runway strip surface ▪ General drainage 	
3. Aerodrome lighting and emergency lights	<ul style="list-style-type: none"> ▪ Runway edge lights (white) ▪ Runway threshold and end lights (green/red green) ▪ Taxiway hold position lights (yellow) ▪ Taxiway (blue) ▪ Apron lights (blue) ▪ PAL floodlight ▪ Wind direction indicator down lights ▪ Obstacle / hazard lights (red) ▪ PAL 	
4. Line markings and markers	<ul style="list-style-type: none"> ▪ Runway 08/26 and 17/35 ▪ Runway end stripes ▪ Threshold markings ▪ Runway end numbers ▪ Centre-line markings ▪ Side stripe markings ▪ Taxiway lead in line ▪ Holding position line ▪ Runway 17/35 -14 runway threshold marker cones ▪ Runway strip gable markers ▪ Unserviceability crosses and cones 	

Inspection Stage	Items Inspected	Comments
	<ul style="list-style-type: none"> ▪ Dumb-bell marker ▪ Wind direction indicator –Primary and Secondary ▪ Condition of wind direction indicator circle ▪ Condition of signal area 	
5. Obstacle limitation surfaces (OLS)	<ul style="list-style-type: none"> ▪ Runway approach and take-off surfaces ▪ Side transitions ▪ Obstacle limitation surfaces ▪ NOTAM issued 	
6. Movement area security and general tidiness of movement area	<ul style="list-style-type: none"> ▪ Vehicle control ▪ Restrictive Signs ▪ Grass height on runway strip ▪ Fence and gate conditions for Wildlife management ▪ Aerodrome emergencies 	
7. Hazardous materials	<ul style="list-style-type: none"> ▪ Fuelling facility ▪ Hazardous chemicals 	
8. Review	<ul style="list-style-type: none"> ▪ Aeronautical Data Originator DOC20/46871 for AIP ▪ ERSA, ▪ FAC ▪ NOTAMS ▪ Aerodrome Manual (DOC20/58280) 	
9. Training	<ul style="list-style-type: none"> ▪ ARO – training valid ▪ WSO – training valid 	

Comments:

.....

.....

.....

.....

.....

Technical Inspector: _____ Date: / /

2.7 Annual Benalla Airport Manual validation and report (DOC20/82638)

Inspection date:

Inspector:

Review Part 139 Manual of Standards 2019 Chapter 12 Division 2 12.11 (12) for conditions.

Inspection Stage	Items Inspected	Comments
Published gradient in the AIP-ERSA	Check approach, take- off, and transitional surfaces to ensure published procedure information is accurate to within 0.05%	
	A check of the other surfaces with the OLS	
	A check of the currency and accuracy of aerodrome information published in the AIP and aerodrome operating procedures specified in the aerodrome manual and supporting documents	
	A check that all ARO's or WSO are trained and generally competent	

2.8 Benalla Airport Method of Work Plan Template (DOC20/66735)

Benalla Airport Method of Work Plan TEMPLATE

MOWP number: _____

Date of issue: _____

Amendments: _____

Reference number: Benalla YBLA XXXX/XX/XX

MOWPS issued in relation to aerodrome: 1

Title: Benalla Aerodrome YBLA XXXX. Title of works e.g. Crack sealing RWY 08/26, line mark RWY 08/ 26 and seal windsock and markers.

Approval Date: _____

Date of commencement: _____

Date of completion: _____

Scope of works

Benalla Rural City Council (description of works)

Work method

The work method includes minimum of four components:

- a. Council staff to develop MOWP and distribute
(Unless the works are unforeseen urgent works, the authorised MOWP will be issued not less than 14 days before the works are scheduled to commence by: Aerodrome Manager to the required recipients as per the Benalla Airport Manual)
- b. Council Staff site setup (48 hours prior to start date)
 - Issue NOTAMs
- c. Detail of work to be performed (date)
(Example only)
 - Define works
 - Establishment of work footprint, plant machinery and equipment.
 - Survey of works.
 - Complete works in defined areas
 - Remove equipment from site.
- d. Cancel NOTAM

The duration of works is to be XXXX days.

A Works Safety Officer is to be present with a radio that can communicate with all air traffic.

A NOTAM is to be raised stating;

(Example Only)

Time – RWY 08/26 NOT AVBL DUE WIP
EXC FOR EMERG ACFT WITH 30MIN PN
CTC TEL: 0419749807

Persons responsible:

Greg Robertson / Elise Wood	<ul style="list-style-type: none">▪ Work Safety Officer, induction of staff, plan works, check NOTAM raised, secure work sites, present until completion.▪ Works Supervisor. To complete works and ensure completion of works in allocated time frame and supervise staff.
Contractor	<ul style="list-style-type: none">▪ A Safe Work Method Statement to be completed before works commence with all staff present. All personnel to be inducted before entry airside or commencement of works.

Timeframe:

Date of commencement: _____

Date of completion: _____

“The actual date and time of commencement will be advised by a NOTAM, to be issued Not less than 48 hours before work commences”

Restrictions to aircraft and issue of NOTAMs

See NOTAM below

Work stages

Refer to drawings below

All Airport Precinct Leasee and User Groups have been notified of proposed works by post or email on XX XXXX 2020

Emergencies and adverse weather

Example only - Works will cease upon the prediction of rainfall and will be undertaken in dry suitable conditions.

NOTAMs

C0XXX/XX NOTAMN

- A) BENALLA 0XXX/19 (AD)1911290030
- B) 200519
- C) 200520
- D) 2130/0700

RWY 08/26 NOT AVBL DUE WIP
EXC FOR EMERG ACFT WITH 30MIN PN
CTC TEL: 0419749807

Restrictions to works organization

Approval by Work Safety Officer is required before any personnel and vehicle can enter airside. BRCC online induction and Airport induction must be completed before commencement.

Hours of work between 7.00 am and 5.00 pm Monday to Friday.

Personnel and Equipment

All staff and equipment will be briefed daily that there will be a ten minute recall and personnel and equipment will have to vacate taxiway area immediately.

Orange flashing warning light must be on the top of all vehicles.

All Personnel must have a high visibility clothing.

No vehicle or equipment is to be left on site after 5 pm without prior approval.

Access

Preferred access is through main security airport gate. Access code is ESTA#. Once airside drive in an easterly direction towards runway

Electrical Change if required

Administration, name, role and phone numbers:

Name	Position	Telephone	Mobile (AH)
Greg Robertson	Work Safety Officer	03 5760 2600	0409 529 463
Elise Wood	Works Supervisor and Work Safety Officer	03 5760 2656	0419 749 807

Authority

“All works will be carried out in accordance with the MOWP”

MOWP expiry date: _____

Signed: _____

Drawings:

Work site, access route and works area (examples only)



Markers show works area



Distribution list

Manager Facilities	Greg Robertson
Project Manager and Work Safety Officer	Elise Wood
Contractor	

2.9 Benalla Airport Wildlife Strike Report (DOC20/53870)

Wildlife Strike Report Form

Date of Occurrence:	Aerodrome:
Time of Occurrence:	Last Departure Point or Destination:
Pilot in Command:	Runway Used:
Squadron:	Position on runway (ch):
Aircraft Registration:	Light Conditions:
Aircraft Make/Model:	Grid Reference:

Weather information at time of strike:

Wind direction (°):	Yes	General description of weather
Wind speed (kts):	Clear <input type="checkbox"/>	
Cloud height (ft):	Fog <input type="checkbox"/>	
Cloud amount (/8):	Rain <input type="checkbox"/>	

Strike:

Confirmed

Unconfirmed

Near miss

Wildlife species:

Number of animals struck:

Location:

On-airfield

Vicinity

Remote

Number of animals found:

Blood smear only (sample DNA for ID)

Feathers only (collect feathers for ID)

Phase of flight:

Descent

Approach

Short finals

Landing roll

Taxi

Take-off run

Rotation

Climb

Carcass: Disposed (take photos of all carcasses)

Retained (freezer)

Species ID checked

Damage: Yes No (Take photographs of all damage)

Description of damage:

Effect on flight:

None

Rejected Take-off

Missed Approach

Precautionary Landing

Speed at time of impact:

Height at time of impact:

Parts Struck:

Radome

Windshield

Nose

Engine

Propeller

Wing

Fuselage

Landing Gear

Tail

Lights

Costs:

Aircraft downtime:

Missions lost/cancelled:

Missions delayed:

Information sources: ATC

Pilot

Aircraft Maintenance

Other

Other (specify)

Wildlife control measures in place at the time of the strike:

Additional description, information or suggestions:

Name: Date and Time:

2.10 Benalla Airport ARO Training and Register reports (DOC20/42791)

Benalla Airport – CASA Training

Date	Name	Course	Comments	Next training date
09/07/2021	Elise Wood	DAMP awareness for SSAA Employees	CASA - Aviation Worx	09/01/2024
09/07/2021	Elise Wood	DAMP Supervisor	CASA - Aviation Worx	09/01/2024
09/07/2021	Elise Wood	Part 139: Aerodromes Element	CASA - Aviation Worx	
29/06/2020	Rhonda Gelletly	DAMP awareness for SSAA Employees	CASA - Aviation Worx	29/01/2023

Benalla Airport – ARO Training

Date	Name	Course	Details	Next training date	HPE record number	Comments
09/04/2014	Greg Robertson	AITTS - ARO / WSO	2 days in Benalla	01/04/2017	IN137511	
10/09/2018	Rhonda Gelletly	KRTS - ARO and WSO	On line training	01/09/2021	DOC20/42785	DOC18/60927
30/04/2018	Dean Steegstra	KRTS - ARO and WSO	On line training	01/04/2021	DOC20/42785	
16/04/2018	Elsie Northey	KRTS - ARO and WSO	On line training	01/05/2021	DOC20/42785	No longer with council
08/08/2018	Craig Morrison	Airport Plus - ARO / WSO Training Course	2 days in Echuca	01/08/2021	DOC18/45610	
17/07/2020	Elsie Northey	Office of transport Security Regional and remote aviation security awareness training	AAA online			No longer with council
17/07/2020	Elsie Northey	NOTAM Awareness Course	AAA online			No longer with council
12/03/2021	Elise Wood	Airport Plus - ARO / WSO Training Course	2 days in Shepparton	01/03/2024	DOC21/40910	

Date	Name	Course	Details	Next training date	HPE record number	Comments
22/04/2021	Elise Wood	NOTAM Awareness Course	AAA online		DOC21/40914	

Benalla Airport – Animal Hazard Training

Date	Name	Course	Comments	Next training date
09/07/2021	Elise Wood	Wildlife Hazard Management Essentials	AAA membership	

3.5 Airside vehicle control (DOC21/50523)

The image shows a presentation slide for Benalla Aerodrome. The slide is titled "BENALLA AERODROME" in large blue letters. Below the title, it says "Visitor / Contractor / Token Holder Safety Induction". The slide is part of a 7-page presentation, with the first page visible in a thumbnail on the left. The thumbnail shows the title slide and the first few pages of the presentation, which include sections like "INTRODUCTION", "LAW, RULES & REGULATIONS", "OCCUPATIONAL HEALTH & SAFETY (OHS)", "PERSONAL SAFETY", and "PERSONAL SAFETY - DMP".

Benalla Rural City Council
July 2020

PO BOX 227
BENALLA VIC 3671

(03) 5760 2600
council@benalla.vic.gov.au

www.benalla.vic.gov.au

Under Review by CASA