

# Council NEWS

Edition 22, February 2019

## CEO'S MESSAGE



Today is my first as Chief Executive Officer. I am delighted to be here and am keen to get out and about and meet as many of you as I can, to see for myself what life in Benalla

Rural City is like. I would like to thank the Mayor, Councillors and staff for their

warm welcome – all of who I am getting to know.

A major area of focus for me is to work with you, the community, to understand exactly what it is you require from the Council and to be part of delivering that to the extent of our capacity.

My first impression of Benalla is of a warm (even hot) and friendly place that has a good feel to it. As my family and

I settle in to our new home and life here, we are enjoying all that Benalla Rural City has to offer.

I look forward to meeting many of you in time and understanding what we want for our community.

Dominic Testoni  
Chief Executive Officer

## COMMUNITY SUPPORT PROGRAM NOW OPEN

Does your community group have a great idea for a local event or to improve facilities and services for the local community?

The Council's 2019 Community Grants Program is now open. Find out about funding opportunities by visiting [www.benalla.vic.gov.au](http://www.benalla.vic.gov.au).

The program allocates approximately \$90,000 in four categories, being:

- Community grants up to \$2,500
- Major Event Funding up to \$1,500
- Youth Participation Grants up to \$1,000
- Community Sponsorship, allocated monthly in amounts of up to \$500.

A free information session will help applicants to understand the grant writing process.

The Community Support Program information session will be held:

Wednesday 13 February 2019  
6pm – 8pm  
Community Care – Ray Sweeney Centre,  
Activity Room 1,  
45 Coster Street, Benalla  
Places are limited. Contact us to RSVP to the information session.

For further information about the program visit [www.benalla.vic.gov.au](http://www.benalla.vic.gov.au).



## DID YOU KNOW? SCHOOL CROSSINGS



Thanks to the Benalla Police for the photograph.

School is back and patrols have begun during school zone times. During these times, speed limits are reduced to 40km/h. Being safe around school crossings is about the safety of children on their way to and from school.

There are 14 school crossings in Benalla which are controlled by 18 school crossing supervisors.

Under the *Road Safety Road Rules 2017*, whenever the school crossing flags are displayed, it is illegal to stop or park:

- 20 metres before a school crossing
- 10 metres after a school crossing
- within 10 metres of an intersection

If school crossing flags are displayed, you must stop for pedestrians and remain stationary until the crossing is clear.

Rules around school crossings are to keep our roads safe for children.

## BUSINESS EVENTS

Have you ever thought about running a business? Do you currently own or manage a small business? The small business sector is fast growing in Benalla Rural City. The Council's business development program helps businesses realise their full potential.

- Friday 15 February  
9am-5pm  
Organisational Entrepreneurship  
(Day 1 of 3)  
Wangaratta - CSU
- Saturday 16 February  
10am-2.30pm  
Benalla Smart Seeds Open  
Help shape the economic future of our region  
Ella Goose, 55 Nunn Street, Benalla
- Thursday 28 February  
5.30pm-8.30pm  
Social Media 101  
Sir Edward 'Weary' Dunlop Learning Centre (Benalla Library)
- Friday 1 March  
9am-5pm  
Organisational Entrepreneurship  
(Day 2 of 3)  
Wangaratta - CSU
- Wednesday 6 March  
4pm-8pm  
Jump Start Me - Flesh out your business idea (Session 1)  
Benalla Library
- Wednesday 13 March  
4pm-8pm  
Jump Start Me - Flesh out your business idea (Session 2)  
Benalla Library
- Friday 15 March  
9am-5pm  
Organisational Entrepreneurship  
(Day 3 of 3)  
Wangaratta - CSU
- Tuesday 26 March  
9.30am-12.30pm  
Instagram for Business  
The Northo, 1 Nunn Street, Benalla

Visit [www.benalla.vic.gov.au](http://www.benalla.vic.gov.au) for more business events and information.

## SPOTLIGHT ON VOLUNTEERS - BENALLA ART GALLERY

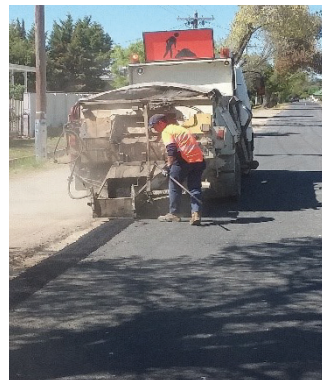
Benalla Art Gallery volunteers were familiarised with the new exhibition, 'Future Perfect - A Celebration of 50 years.' The exhibition celebrates the extraordinary art collection the Gallery has built over the past 50 years. Art Gallery volunteers are an important and valued part of the Benalla Art Gallery's operation. Contact us if you're interested in being a part of the Gallery's team of volunteers.



## WORKS AROUND BENALLA RURAL CITY



We replaced 40 lineal metres of kerb and channel across Benalla, including Albert Street, Arundel Street, William Street and Russell Street.



We continually inspect sealed roads for edge breaks and other issues. We have recently repaired the edge of the sealed road in Nixon Street, Benalla.



The bridge at Sharp Road, Gooramab, had stabilisation works to extend the life of the bridge.

## COMMUNITY SATISFACTION SURVEY

Over the next few weeks you may receive a call from an independent market research agency, National Field Services. They are conducting a community satisfaction survey on behalf of Councils across Victoria.

We appreciate you taking the time to assist them with your valuable feedback.

Please be assured that your details and individual responses are confidential. Only the overall results are shared with the Council. If you have any questions, contact the Council's Customer Service Centre on 03 5760 2600.

## GRADER

The grader has been working in these areas:

**Thoona**  
Old Thoona Road  
Thoona Boweya Road  
Glenrowan Boweya Road

**Tatong**  
Mitchell Road  
Kennedy Lane

