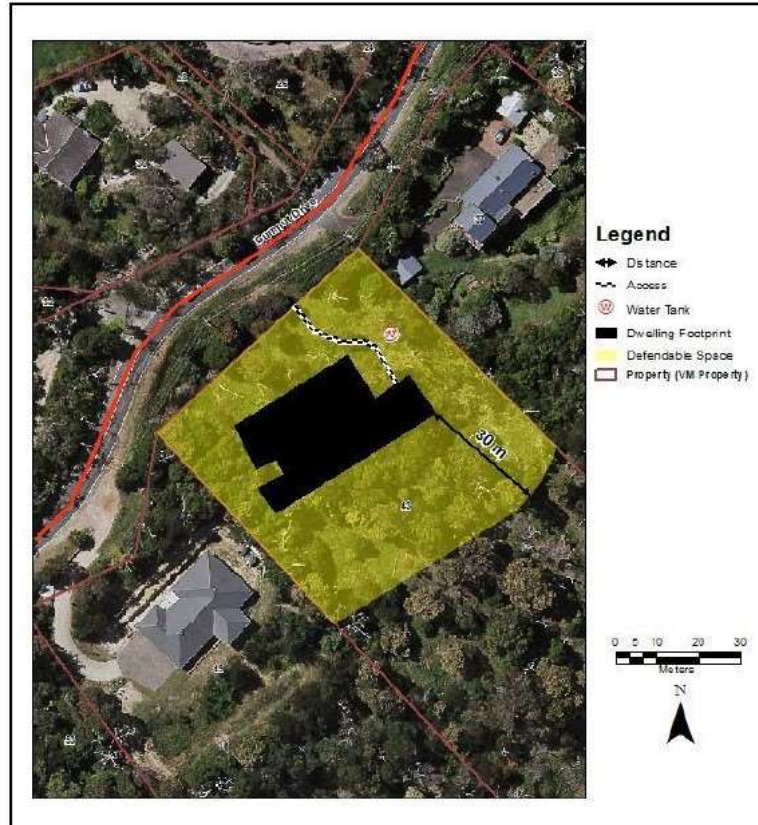


Example 1: New Single Dwelling

Bushfire Management Plan – 43 Gumnut Drive, Wattleton



Prepared by: ABGC Bushfire Consultants Pty Ltd

Version No.: 1

Date: 15/09/2017

Bushfire Protection Measures

a) Defendable Space

Defendable space is provided for a distance of 30m around the dwelling or to the property boundary whichever is the lesser and managed in accordance with the following:

- Grass must be short cropped and maintained during the declared fire danger period.
- All leaves and vegetation debris must be removed at regular intervals during the declared fire danger period.
- Within 10 metres of a building, flammable objects must not be located close to the vulnerable parts of the building.
- Plants greater than 10 centimetres in height must not be placed within 3m of a window or glass feature of the building.
- Shrubs must not be located under the canopy of trees.
- Individual and clumps of shrubs must not exceed 5 sq. metres in area and must be separated by at least 5 metres.
- Trees must not overhang or touch any elements of the building.
- The canopy of trees must be separated by at least 2 metres.
- There must be a clearance of at least 2 metres between the lowest tree branches and ground level.

b) Construction Standard

- Dwelling designed and constructed to a minimum Bushfire Attack Level of BAL –29.

c) Water Supply

The following requirements apply:

- An effective capacity of 10,000 litres.
- Be stored in an above ground water tank constructed of concrete or metal.
- Have all fixed above ground water pipes and fittings required for firefighting purposes made of corrosive resistant metal.
- Include a separate outlet for occupant use.

Where a 10,000 litre water supply is required, the following fire authority fittings and access must be provided:

- Be readily identifiable from the building or appropriate identification signage to the satisfaction of the relevant fire authority.
- Be located within 60 metres of the outer edge of the approved building.
- The outlet/s of the water tank must be within 4 metres of the accessway and unobstructed.
- Incorporate a separate ball or gate valve (British Standard Pipe (BSP 65 millimetre) and coupling (64 millimetre CFA 3 thread per inch male fitting).
- Any pipework and fittings must be a minimum of 65 millimetres (excluding the CFA coupling).

d) Access

Access Required: No
Yes

The following design and construction requirements apply:

- All-weather construction.
- A load limit of at least 15 tonnes.
- Provide a minimum trafficable width of 3.5 metres.
- Be clear of encroachments for at least 0.5 metres on each side and at least 4 metres vertically.
- Curves must have a minimum inner radius of 10 metres.
- The average grade must be no more than 1 in 7 (14.4%) (8.1°) with a maximum grade of no more than 1 in 5 (20%) (11.3°) for no more than 50 metres.
- Dips must have no more than a 1 in 8 (12.5 per cent) (7.1 degrees) entry and exit angle.

Country Fire Authority (CFA), ['Example 1 - A new dwelling in the schedule to the BMO'](#).